



WAUZZZGEXLB039879

Vehicle details

Operator		Inspection condition	conditional: light/moisture/dirt
License number		Mileage (Read)	72,202 km
Manufacturer	Audi	Next maintenance in	-2 Monat(e)
Type / Model	e-tron 50	Main inspection (Report on hand)	12/2025
Vehicle Identification number	WAUZZZGEXLB039879	Power / Engine displacement	158 kW
First registration	3 Nov 2020	Upholstery/Colour	/
Last maintenance	08/2023, 46,498 km	Paintwork	
Fuel type	Electric	Gearbox	Automatic

Zustandsbericht

Value reducing factors

No.	Component group	Description
1	Wheel / tyres	Alloy rim - front left side - Scratched - Loss in value
2	Wheel / tyres	Alloy rim - rear right side - Scratched - Loss in value
3	Front bumper	Spoiler - Scratched - Smart repair
4	Misc.	Inspection / maintenance - Due - Replace
5	Vehicle glazing	Windscreen (Rissbildung) - Stone chips - Replace

Wear and tear

No.	Component group	Description
1	Interior	Interior - Abrasion - No deduction
2	Body	Body (Steinschläge) - Scratch(es) - No deduction

Missing parts

Missing part

Previous damages

No.	Previous damage
1	Front, Underbody, Provided by user / customer

Detected repainting

No.	Location
	None detectable

TÜV SÜD Auto Plus GmbH
Gutenbergstr. 13
70771 Leinfelden-Echterdingen

Inspection location
Allane Mobility Consulting
GmbH

69190 Walldorf

Inspection date: 28 Nov 2024

Protocol number: 37242362

Delivery date: 28 Nov 2024



Auto Plus

Main tyres

Axle	Tyre size	Manufacturer	Type of tyre	Tread depth	Roadworthy	Permissibility
1	255/50 R20 109H	Goodyear	Summer tyres	5mm - 5mm	o.k.	
2	255/50 R20 109H	Goodyear	Summer tyres	5mm - 5mm	o.k.	

Additional tyres

Axle	Tyre size	Manufacturer	Type of tyre	Tread depth	Roadworthy	Permissibility
1	255/55 R19 111H	Pirelli	Winter tyres	5mm - 5mm	o.k.	
2	255/55 R19 111H	Pirelli	Winter tyres	4mm - 4mm	o.k.	

The wear and tear condition and possible damages to the tyres are considered in the value.

Comments

Keine Gewähr auf Vollständigkeit und

Richtigkeit der angezeigten Ausstattung.

Techn. Änderungen vorbehalten

Das Fahrzeug weist dem Alter, der Laufleistung und dem

Einsatzzweck entsprechende Gebrauchsspuren auf.

elektr. Komponenten geprüft, i. O.

Lackwerte geprüft, i. O.

Fahrzeug war zum Zeitpunkt der Besichtigung verschmutzt, weitere Beschädigungen können nicht ausgeschlossen werden.

TÜV SÜD Auto Plus GmbH
Gutenbergstr. 13
70771 Leinfelden-Echterdingen

Inspection location
Allane Mobility Consulting
GmbH
69190 Walldorf

Inspection date: 28 Nov 2024
Protocol number: 37242362
Delivery date: 28 Nov 2024



Vehicle details

Manufacturer	Audi	Inspection condition	conditional: light/moisture/dirt
Type / Model	e-tron 50	Mileage (Read)	72,202 km
Vehicle Identification number	WAUZZZGEXLB039879	First registration	3 Nov 2020

Vehicle identification:

The vehicle identification number (VIN) was read and its conformity with the documents submitted was verified during the inspection by the undersigned.

Inspection conditions:

A proper visual inspection of the paintwork and the bodywork was only possible to a limited extent due to insufficient lighting conditions/wetness or dirt. At the time of the inspection, the condition could not be guaranteed to be sufficient for an assessment. The expert therefore recommends a further inspection to reduce the prognosis risk.

General condition:

The vehicle shows traces of wear and tear corresponding to its age and purpose

Overview pictures



Figure 1: Diagonal front



Figure 2: Diagonal front



Figure 3: Diagonal rear



Figure 4: Diagonal rear



Figure 5: Interior



Figure 6: Interior



Figure 7: Interior



Figure 8: Interior



Figure 9: Interior



Figure 10: Misc.

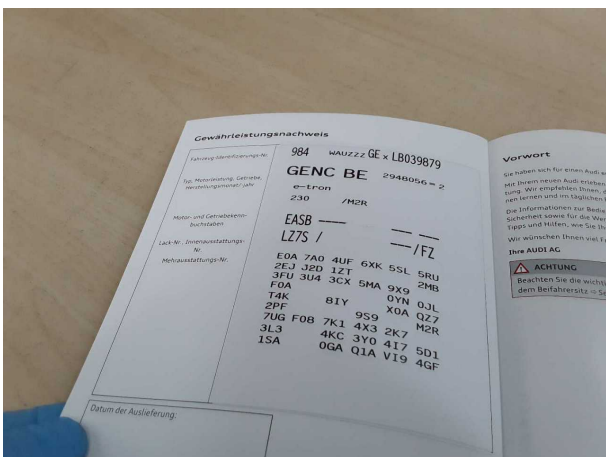


Figure 11: Misc.



Figure 12: Misc.



Figure 13: Misc.



Figure 14: Misc.



Figure 15: Misc.



Figure 16: Misc.



Figure 17: Misc.



Figure 18: Misc.



Figure 19: Misc.



Figure 20: Misc.



Figure 21: Misc.



Figure 22: Misc.



Figure 23: Misc.



Figure 24: Misc.

TÜV SÜD Auto Plus GmbH
Gutenbergstr. 13
70771 Leinfelden-Echterdingen

Inspection location
Allane Mobility Consulting
GmbH

69190 Walldorf

Inspection date: 28 Nov 2024
Protocol number: 37242362
Delivery date: 28 Nov 2024



Figure 25: Misc.



Figure 26: Misc.

Pictures of damage



Damage #1: Wheel / tyres: Alloy rim - front left side - Scratched - Loss in value



Damage #1: Wheel / tyres: Alloy rim - front left side - Scratched - Loss in value



Damage #2: Wheel / tyres: Alloy rim - rear right side - Scratched - Loss in value



Damage #2: Wheel / tyres: Alloy rim - rear right side - Scratched - Loss in value



Damage #3: Front bumper: Spoiler - Scratched - Smart repair



Damage #3: Front bumper: Spoiler - Scratched - Smart repair

TÜV SÜD Auto Plus GmbH
Gutenbergstr. 13
70771 Leinfelden-Echterdingen

Inspection location
Allane Mobility Consulting
GmbH

69190 Walldorf

Inspection date: 28 Nov 2024
Protocol number: 37242362
Delivery date: 28 Nov 2024



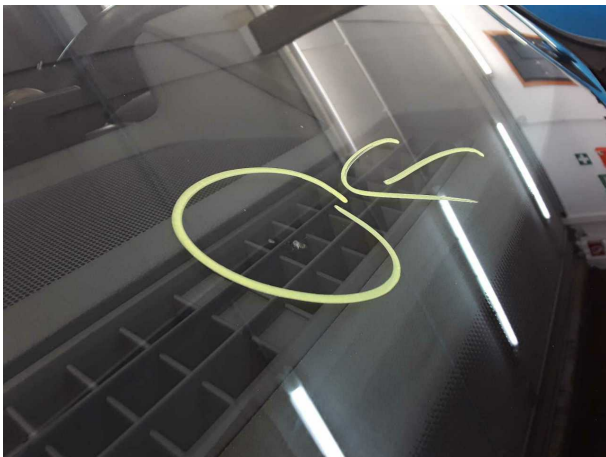
Auto Plus



Damage #4: Misc.: Inspection / maintenance - Due - Replace



Damage #5: Vehicle glazing: Windscreen (Rissbildung) - Stone chips - Replace



Damage #5: Vehicle glazing: Windscreen (Rissbildung) - Stone chips - Replace