

WBA11AG050CF79255

Vehicle details

Operator		Inspection condition	conditional: light/ moisture/dirt
License number		Mileage (Read)	24,105 km
Manufacturer	BMW	Next maintenance in	-3 Monat(e)
Type / Model	5er-Reihe 530e Limousine4-türig 1998 ccm 292 PS / 215 KW Elektrisch 8-Gang Automatik	Main inspection (Report not on hand)	
Vehicle Identification number	WBA11AG050CF79255	Power / Engine displacement	215 kW / 1,998 ccm
First registration	12 Nov 2020	Upholstery/Colour	/
Last maintenance		Paintwork	
Fuel type	Hybrid P / E ext. charg.	Gearbox	Automatic

Zustandsbericht

Value reducing factors

No.	Component group	Description
1	Wheel / tyres	Tyre - front left side - Leaking - Perform diagnosis
2	Documents	Main inspection certificate (Fehlt) - Replace
3	Misc.	Inspection / maintenance - Due - Replace

Wear and tear

No.	Component group	Description
1	Body	Body (Kratzer,Dellen) - Stone chips - No deduction
2	Vehicle glazing	Windscreen - Stone chips - No deduction
3	Interior	Interior - Abrasion - No deduction

Missing parts

Missing part

Detected repainting

No.	Location
	None detectable

Main tyres

Axle	Tyre size	Manufacturer	Type of tyre	Tread depth	Roadworthy	Permissibility
1	245/45 R18 100Y	Bridgestone	Summer tyres	5mm - 5mm	o.k.	o.k.
2	245/45 R18 100Y	Bridgestone	Summer tyres	3mm - 3mm	o.k.	o.k.



Additional tyres

Axle	Tyre size	Manufacturer	Type of tyre	Tread depth	Roadworthy	Permissibility
1	245/45 R18 100V	Goodyear	Winter tyres	6mm - 6mm	o.k.	Not o.k.
2	245/45 R18 100V	Goodyear	Winter tyres	5mm - 5mm	o.k.	Not o.k.

The wear and tear condition and possible damages to the tyres are considered in the value.

Equipment

Equipment

Description
Automatic air conditioning
Navigation unit with map view
Radio DAB

Comments

Keine Gewähr auf Vollständigkeit und Richtigkeit der angezeigten Ausstattung.
Techn. Änderungen vorbehalten
Das Fahrzeug weist dem Alter, der Laufleistung und dem Einsatzzweck entsprechende Gebrauchsspuren auf.
elektr. Komponenten geprüft, i. O.

Lackwerte geprüft, i. O.

TÜV SÜD Auto Plus GmbH
Gutenbergstr. 13
70771 Leinfelden-Echterdingen

Inspection location
Autokontor Bayern GmbH
Windecker Straße 2
61137 Schöneck

Inspection date: 9 Jan 2025
Protocol number: 37870309



Auto Plus

Vehicle details

Manufacturer	BMW	Inspection condition	conditional: light/moisture/dirt
Type / Model	5er-Reihe 530e Limousine4-türig 1998 ccm 292 PS / 215 KW Elektrisch 8-Gang Automatik	Mileage (Read)	24,105 km
Vehicle Identification number	WBA11AG050CF79255	First registration	12 Nov 2020

Vehicle identification:

The vehicle identification number (VIN) was read and its conformity with the documents submitted was verified during the inspection by the undersigned.

Inspection conditions:

A proper visual inspection of the paintwork and the bodywork was only possible to a limited extent due to insufficient lighting conditions/wetness or dirt. At the time of the inspection, the condition could not be ensured for an adequate assessment. The expert therefore recommends a further inspection to reduce the prognosis risk.

General condition:

The vehicle shows traces of wear and tear corresponding to its age and purpose

Overview pictures



Figure 1: Diagonal front



Figure 2: Diagonal front



Figure 3: Diagonal rear



Figure 4: Diagonal rear

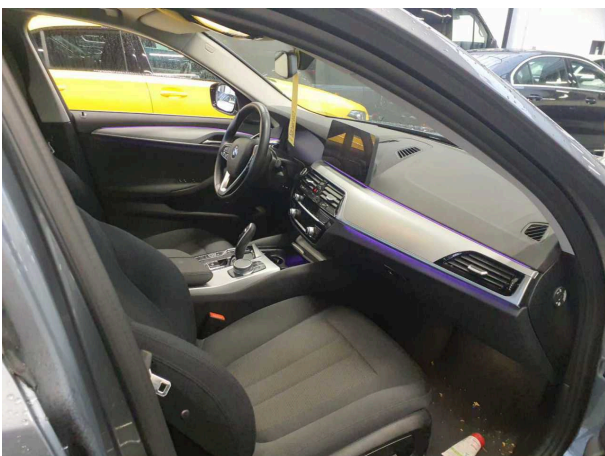


Figure 5: Interior

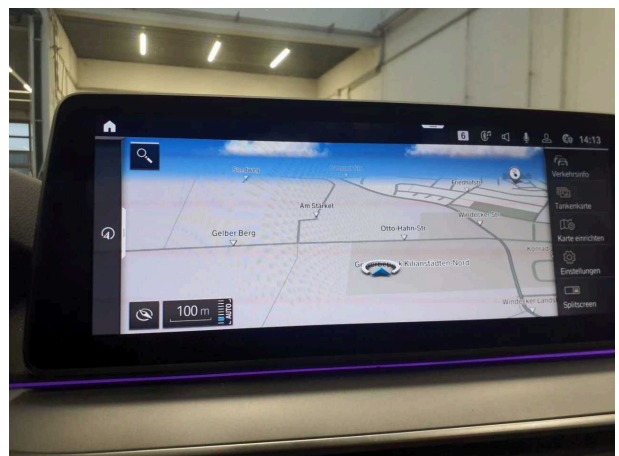


Figure 6: Interior



Figure 7: Interior



Figure 8: Interior



Figure 9: Misc.

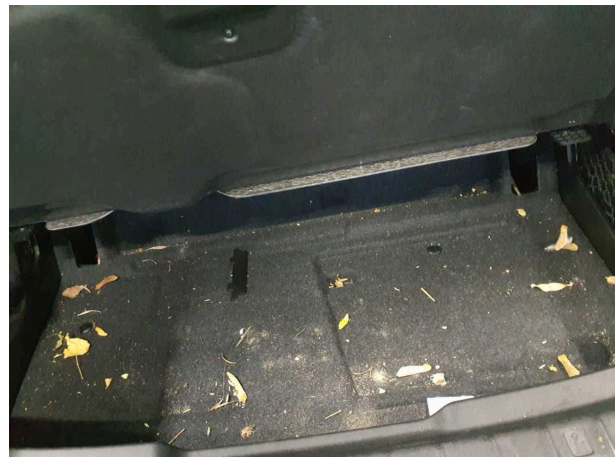


Figure 10: Misc.



Figure 11: Misc.



Figure 12: Misc.



Figure 13: Misc.



Figure 14: Misc.

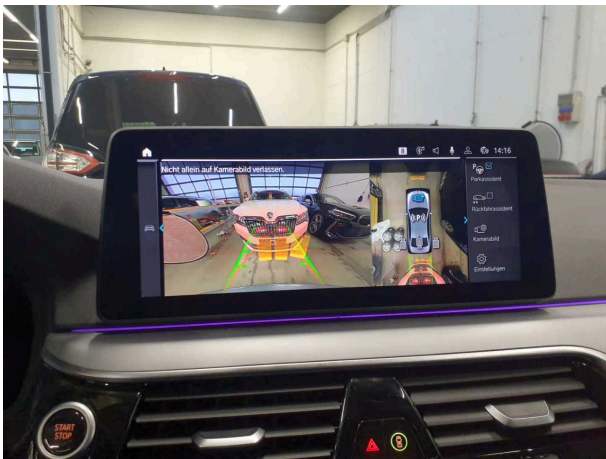


Figure 15: Misc.



Figure 16: Misc.

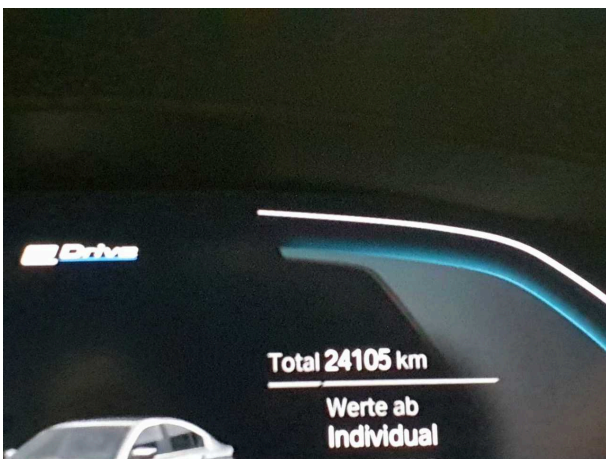


Figure 17: Misc.

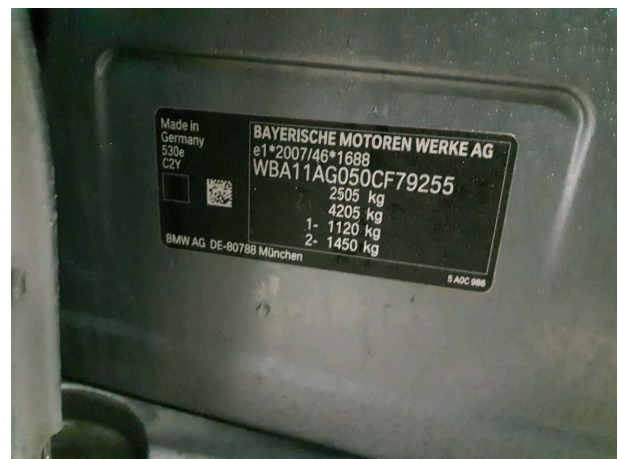


Figure 18: Misc.



Figure 19: Misc.



Figure 20: Misc.

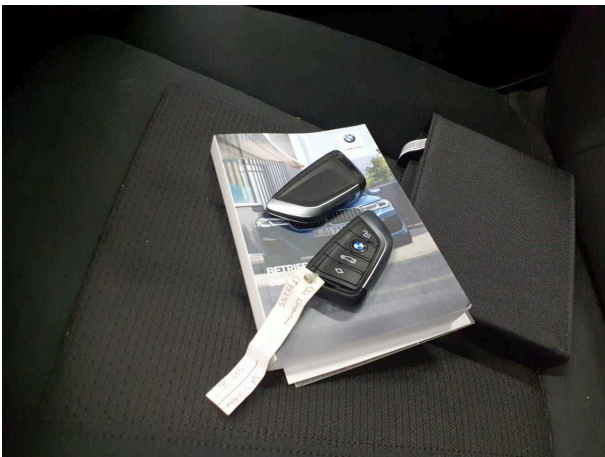


Figure 21: Misc.



Figure 22: Misc.

Pictures of damage



Damage #1: Wheel / tyres: Tyre - front left side - Leaking - Perform diagnosis



Damage #3: Misc.: Inspection / maintenance - Due - Replace