



WBA6K510X0FJ04263

Vehicle details

Operator		Inspection condition	conditional: light/moisture/dirt
License number		Mileage (Read)	145,814 km
Manufacturer	BMW	Next maintenance in	20,000 km
Type / Model	330i Touring Aut. Sport Line	Main inspection	
Vehicle Identification number	WBA6K510X0FJ04263	Power / Engine displacement	190 kW / 1,998 ccm
First registration	12 Nov 2019	Upholstery/Colour	Cloth / leather combination / Black
Last maintenance		Paintwork	Red
Fuel type	Petrol	Gearbox	Automatic

Zustandsbericht

Value reducing factors

No.	Component group	Description
1	Vehicle glazing	Windscreen with lane departure assistant (mit Rissbildung zu nah am Rand) - Stone chips - Replace
2	Front bumper	Front bumper - Scratched - Paint

Wear and tear

No.	Component group	Description
1	Misc.	Inspection / maintenance (Restlauf bei Besichtigung 20000 km) - No deduction
2	Body	Body (Kratzer,Dellen) - Stone chips - No deduction

Missing parts

Missing part

Detected repainting

No.	Location
None detectable	

Main tyres

Axle	Tyre size	Manufacturer	Type of tyre	Tread depth	Roadworthy	Permissibility
1	225/50 R17 98H	Pirelli	Winter tyres	4mm - 4mm	o.k.	Not o.k.
2	225/50 R17 98H	Pirelli	Winter tyres	5mm - 5mm	o.k.	Not o.k.

Additional tyres

Axle	Tyre size	Manufacturer	Type of tyre	Tread depth	Roadworthy	Permissibility
1	225/50 R17 98Y	Hankook	Summer tyres	5mm - 5mm	o.k.	o.k.
2	225/50 R17 98Y	Hankook	Summer tyres	4mm - 4mm	o.k.	o.k.

TÜV SÜD Auto Plus GmbH
Gutenbergstr. 13
70771 Leinfelden-Echterdingen

Inspection location
Autokontor Bayern GmbH
Windecker Straße 2
61137 Schöneck

Inspection date: 15 Jan 2025
Protocol number: 37995861



Auto Plus

The wear and tear condition and possible damages to the tyres are considered in the value.

Equipment

Standard equipment

Description
Active Guard Plus
Airbag for driver and front passenger
Airbag: Head airbags front and rear
Airbag: Passenger airbag deactivation
Airbag: Side airbag for driver and front passenger
ambient light
Anti-lock braking system (ABS) including brake assist and dynamic brake lights
armrests front and rear
attention assistant
Auto Start/Stop function
automatic climate control with 3-zone control
BMW ID
Brake light, third
center armrest in the rear
Central locking
Connected Drive Services
Cruise control with braking function
door sills, front
driving experience switch
Dynamic Stability Control (DSC) including Dynamic Traction Control (DTC)
electronic immobilizer
Exterior mirrors electrically adjustable and heated
Gasoline particulate filter
headrests (5) front and rear
headrests in the rear, foldable
Heat/sun protection glazing, tinted green all around
Intelligent emergency call including TeleServices and BMW Accident Assistance
interior mirror, automatically dimming
interior trim black high-gloss
Keyless engine start
Lashing eyes in the luggage compartment
LED daytime running lights
LED headlights for low and high beam
Legal emergency call
luggage compartment cover and partition net
M High Gloss Shadow Line
M roof rails high-gloss Shadow Line
On-board computer
Package: Connected Package

TÜV SÜD Auto Plus GmbH
Gutenbergstr. 13
70771 Leinfelden-Echterdingen

Inspection location
Autokontor Bayern GmbH
Windecker Straße 2
61137 Schöneck

Inspection date: 15 Jan 2025
Protocol number: 37995861



Auto Plus

Description
Package: Storage Package
Paint finish: Solid paint
Park Distance Control (PDC), front and rear
parking brake, electromechanical
Radio accessories: DAB tuner
Radio: BMW Live Cockpit
Rain sensor
Rear lights in LED technology
Rear window can be opened separately, heated
Rear window wiper
seat belts (3-point automatic)
Seats: ISOFIX child seat attachment
Seats: Sports seats for driver and front passenger
Servotronic
Socket (12 V)
Speed Limiter
steering column adjustment mechanical
Steering wheel: Multifunction for steering wheel
Steering wheel: sports leather steering wheel
storage options
Tachometer
tailgate opening via radio key
tailgate operation, automatic
Telephone: Hands-free system with USB interface
teleservices
through-loading system
Transmission: 8-speed Steptronic transmission
Upholstery: fabric/Sensatec combination
Velour floor mats
Warning triangle with first aid kit
Wheel accessories: tire pressure control
Wheel accessories: wheel bolt lock
Wheels: light alloy wheels V-spoke 776
window lifter, electric

TÜV SÜD Auto Plus GmbH
Gutenbergstr. 13
70771 Leinfelden-Echterdingen

Inspection location
Autokontor Bayern GmbH
Windecker Straße 2
61137 Schöneck

Inspection date: 15 Jan 2025
Protocol number: 37995861



Auto Plus

Extra equipment

Description
Active cruise control with Stop&Go function
Driving Assistant
Glazing: Acoustic glazing
LED fog lights
Package: Interior and exterior mirrors
Paint finish: Metallic
Seats: Lumbar support for driver's seat
Seats: Seat heating for driver and front passenger
Transmission: 8-speed sports automatic transmission Steptronic
Wheels: Light alloy wheels V-spoke 775 Bicolor

Comments

Keine Gewähr auf Vollständigkeit und
Richtigkeit der angezeigten Ausstattung.
Techn. Änderungen vorbehalten.
Das Fahrzeug weist dem Alter, der Laufleistung und dem
Einsatzzweck entsprechende Gebrauchsspuren auf.

elektr. Komponenten geprüft, i. O.

Lackwerte geprüft, i. O.

TÜV SÜD Auto Plus GmbH
Gutenbergstr. 13
70771 Leinfelden-Echterdingen

Inspection location
Autokontor Bayern GmbH
Windecker Straße 2
61137 Schöneck

Inspection date: 15 Jan 2025
Protocol number: 37995861



Auto Plus

Vehicle details

Manufacturer	BMW	Inspection condition	conditional: light/moisture/dirt
Type / Model	330i Touring Aut. Sport Line	Mileage (Read)	145,814 km
Vehicle Identification number	WBA6K510X0FJ04263	First registration	12 Nov 2019

Vehicle identification:

The vehicle identification number (VIN) was read and its conformity with the documents submitted was verified during the inspection by the undersigned.

Inspection conditions:

A proper visual inspection of the paintwork and the bodywork was only possible to a limited extent due to insufficient lighting conditions/wetness or dirt. At the time of the inspection, the condition could not be ensured for an adequate assessment. The expert therefore recommends a further inspection to reduce the prognosis risk.

General condition:

The vehicle shows traces of wear and tear corresponding to its age and purpose

Overview pictures



Figure 1: Diagonal front



Figure 2: Diagonal front



Figure 3: Diagonal rear



Figure 4: Diagonal rear

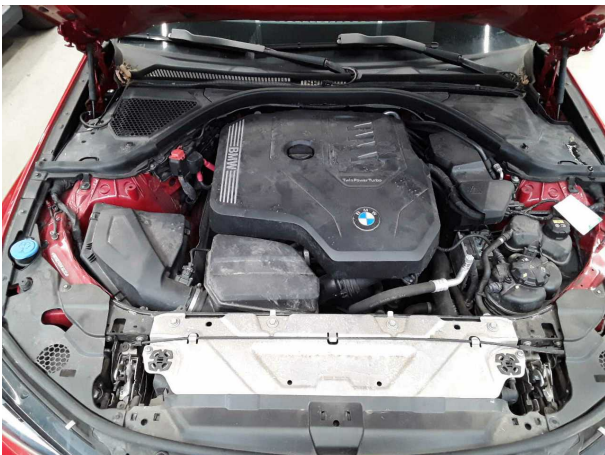


Figure 5: Interior



Figure 6: Interior



Figure 7: Interior



Figure 8: Interior



Figure 9: Interior



Figure 10: Interior



Figure 11: Interior

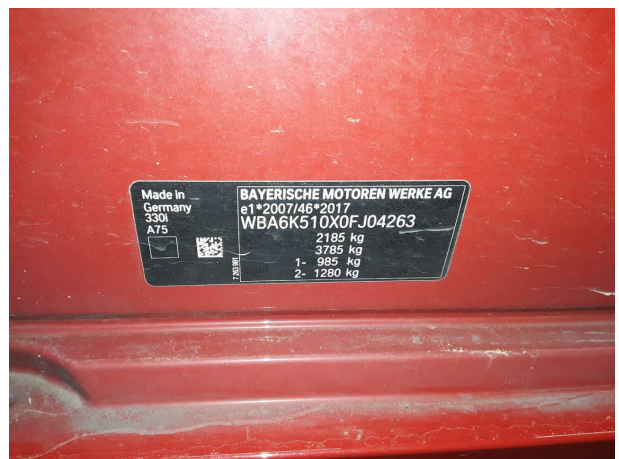


Figure 12: VIN



Figure 13: Accessories



Figure 14: Accessories



Figure 15: Accessories

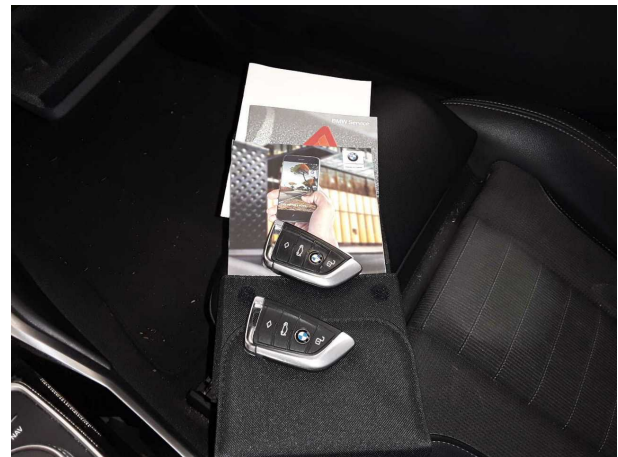


Figure 16: Documents



Figure 17: Documents



Figure 18: Documents



Figure 19: Documents



Figure 20: Mounted tyres

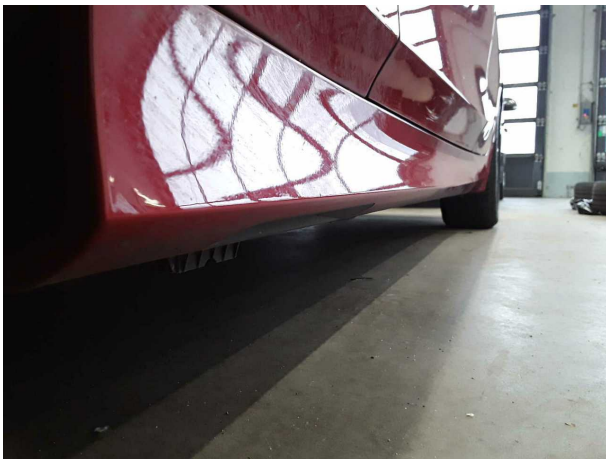


Figure 21: Misc.

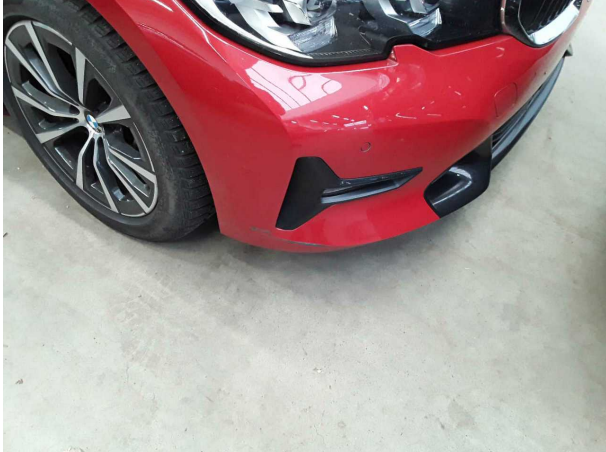


Figure 22: Misc.

Pictures of damage



Damage #1: Vehicle glazing: Windscreen with lane departure assistant (mit Rissbildung zu nah am Rand) - Stone chips - Replace



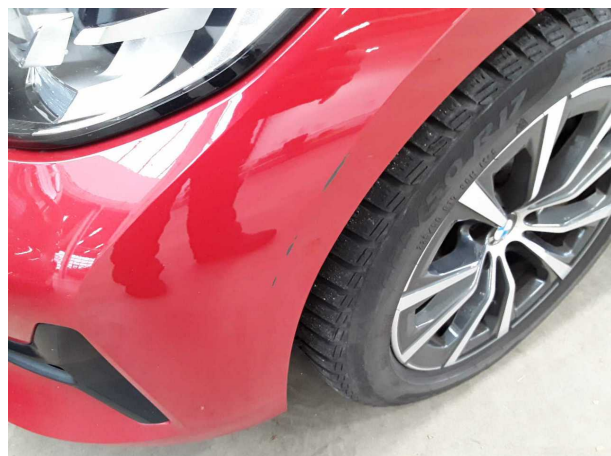
Damage #2: Front bumper: Front bumper - Scratched - Paint



Damage #1: Vehicle glazing: Windscreen with lane departure assistant (mit Rissbildung zu nah am Rand) - Stone chips -



Damage #2: Front bumper: Front bumper - Scratched - Paint



Damage #2: Front bumper: Front bumper - Scratched - Paint