



WBA11FY000FR29303

Vehicle details

Operator		Inspection condition	conditional: light/ moisture/dirt
License number		Mileage (Read)	32,736 km
Manufacturer	BMW	Next maintenance in	-1,100 km
Type / Model	3er-Reihe 318i Touring Auto Kombi5-türig 1998 ccm 156 PS / 115 KW bleifrei 8-Gang Automatik	Main inspection	
Vehicle Identification number	WBA11FY000FR29303	Power / Engine displacement	/ 1,998 ccm
First registration	3 Nov 2023	Upholstery/Colour	Leather / Black
Last maintenance		Paintwork	Grey
Fuel type	Petrol	Gearbox	Automatic

Zustandsbericht

Value reducing factors

No.	Component group	Description
1	Misc.	Inspection / maintenance - Due - Replace
2	Vehicle glazing	Windscreen with lane departure assistant - Broken / torn - Replace
3	Door - rear left side	Door - Dent / paintcoat damage - Repair and paint
4	Roof	Roof - Dent(s) - Repair and paint

Wear and tear

No.	Component group	Description
The vehicle shows traces of wear and tear corresponding to its age and purpose		

Missing parts

Missing part
Wheel / tyres - Wheel cover set - complete

Detected repainting

No.	Location
None detectable	

Main tyres

Axle	Tyre size	Manufacturer	Type of tyre	Tread depth	Roadworthy	Permissibility
1	205/60 R16 96H	Pirelli	Winter tyres	7mm - 7mm	Not o.k.	Not o.k.
2	205/60 R16 96H	Pirelli	Winter tyres	5mm - 5mm	Not o.k.	Not o.k.

Additional tyres

Axle	Tyre size	Manufacturer	Type of tyre	Tread depth	Roadworthy	Permissibility
1	225/50 R17 98Y	Bridgestone	Summer tyres	5mm - 5mm	Not o.k.	o.k.
2	225/50 R17 98Y	Bridgestone	Summer tyres	5mm - 5mm	Not o.k.	o.k.

The wear and tear condition and possible damages to the tyres are considered in the value.

Equipment

Equipment

Description
Automatic air conditioning
Navigation unit with map view
Radio DAB

Comments

Keine Gewähr auf Vollständigkeit und
Richtigkeit der angezeigten Ausstattung.
Techn. Änderungen vorbehalten.
Das Fahrzeug weist dem Alter, der Laufleistung und dem
Einsatzzweck entsprechende Gebrauchsspuren auf.

elektr. Komponenten geprüft, i. O.

Lackwerte geprüft, i. O.

TÜV SÜD Auto Plus GmbH
Gutenbergstr. 13
70771 Leinfelden-Echterdingen

Inspection location
Autokontor Bayern GmbH
Windecker Straße 2
61137 Schöneck

Inspection date: 16 Jan 2025
Protocol number: 37988176



Auto Plus

Vehicle details

Manufacturer	BMW	Inspection condition	conditional: light/ moisture/dirt
Type / Model	3er-Reihe 318i Touring Auto Kombi5-türig 1998 ccm 156 PS / 115 KW bleifrei 8-Gang Automatik	Mileage (Read)	32,736 km
Vehicle Identification number	WBA11FY000FR29303	First registration	3 Nov 2023

Vehicle identification:

The vehicle identification number (VIN) was read and its conformity with the documents submitted was verified during the inspection by the undersigned.

Inspection conditions:

A proper visual inspection of the paintwork and the bodywork was only possible to a limited extent due to insufficient lighting conditions/wetness or dirt. At the time of the inspection, the condition could not be ensured for an adequate assessment. The expert therefore recommends a further inspection to reduce the prognosis risk.

General condition:

The vehicle shows traces of wear and tear corresponding to its age and purpose

Overview pictures



Figure 1: Diagonal front



Figure 2: Diagonal front

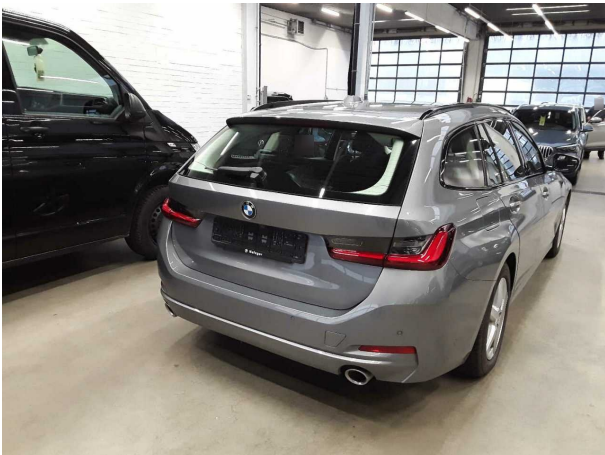


Figure 3: Diagonal rear



Figure 4: Diagonal rear



Figure 5: Interior

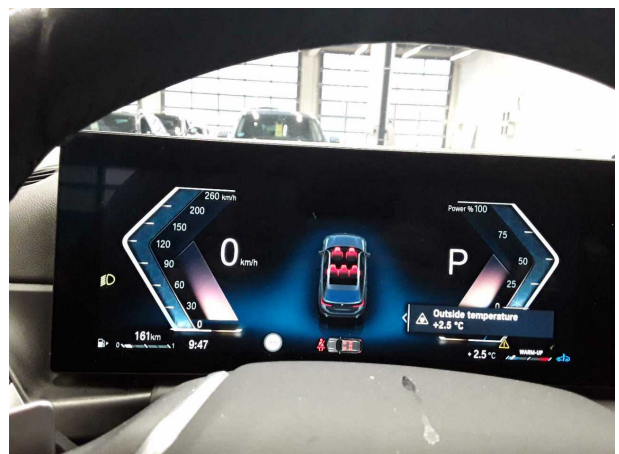


Figure 6: Interior

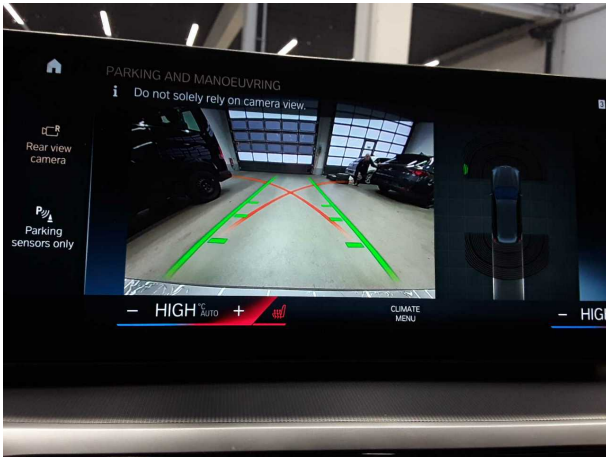


Figure 7: Interior



Figure 8: Interior

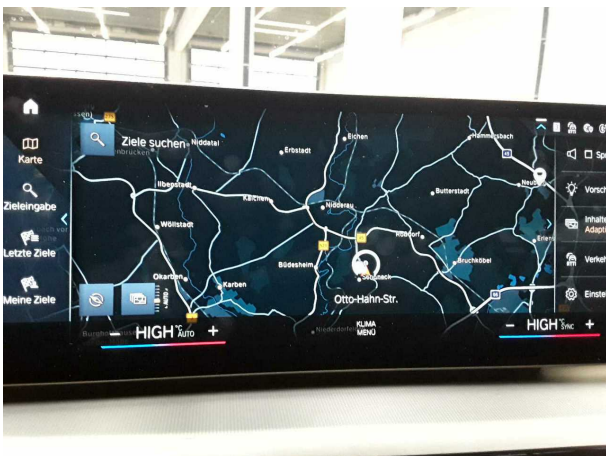


Figure 9: Interior

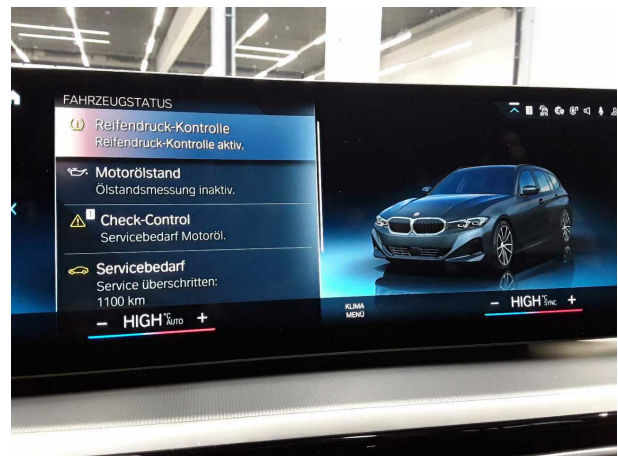


Figure 10: Interior



Figure 11: Interior



Figure 12: Interior



Figure 13: Interior



Figure 14: VIN



Figure 15: Accessories

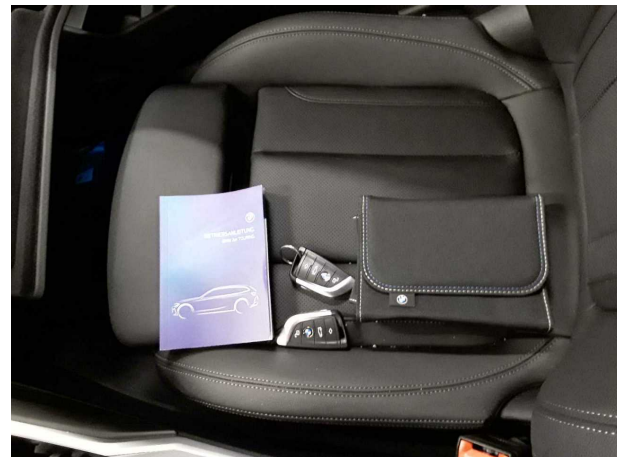


Figure 16: Documents



Figure 17: Mounted tyres

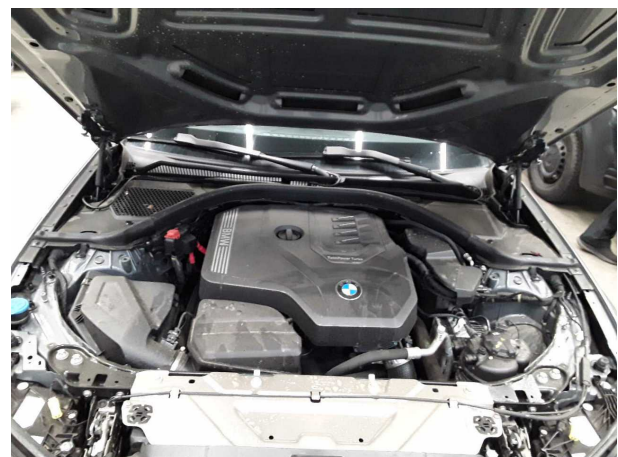


Figure 18: Misc.

TÜV SÜD Auto Plus GmbH
Gutenbergstr. 13
70771 Leinfelden-Echterdingen

Inspection location
Autokontor Bayern GmbH
Windecker Straße 2
61137 Schöneck

Inspection date: 16 Jan 2025
Protocol number: 37988176



Auto Plus



Figure 19: Misc.



Figure 20: Misc.

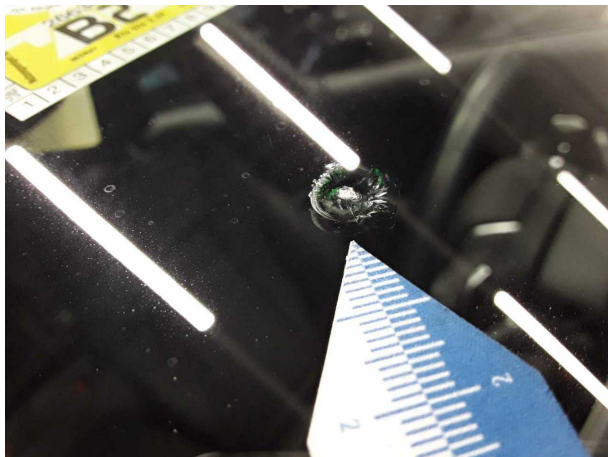
Pictures of damage



Damage #1: Misc.: Inspection / maintenance - Due - Replace



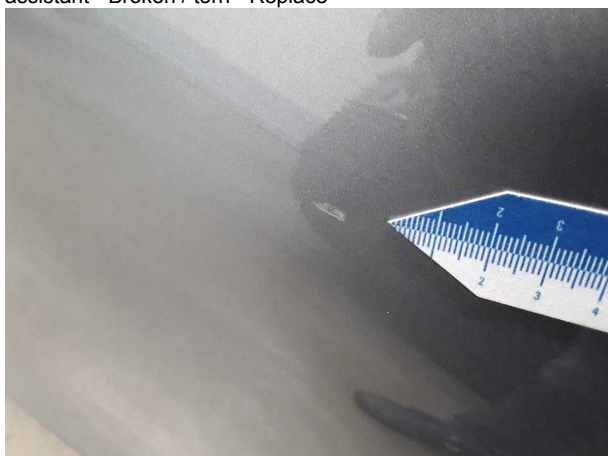
Damage #2: Vehicle glazing: Windscreen with lane departure assistant - Broken / torn - Replace



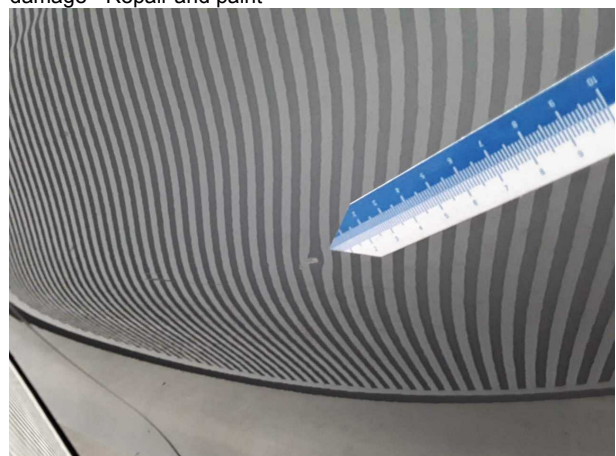
Damage #2: Vehicle glazing: Windscreen with lane departure assistant - Broken / torn - Replace



Damage #3: Door - rear left side: Door - Dent / paintcoat damage - Repair and paint



Damage #3: Door - rear left side: Door - Dent / paintcoat damage - Repair and paint



Damage #3: Door - rear left side: Door - Dent / paintcoat damage - Repair and paint



Damage #4: Roof: Roof - Dent(s) - Repair and paint



Damage #4: Roof: Roof - Dent(s) - Repair and paint



Damage #4: Roof: Roof - Dent(s) - Repair and paint



Damage #4: Roof: Roof - Dent(s) - Repair and paint