

WBA21BY0807M11558

Vehicle details

Operator		Inspection condition	conditional: light/moisture/dirt
License number		Mileage (Read)	41,978 km
Manufacturer	BMW	Next maintenance in	10,000 km
Type / Model	218d Active Tourer	Main inspection (Read from ZBI)	01/2026
Vehicle Identification number	WBA21BY0807M11558	Power / Engine displacement	110 kW / 1,995 ccm
First registration	30 Jan 2023	Upholstery/Colour	/
Last maintenance	02/2024, 24,873 km	Paintwork	
Fuel type	Diesel	Gearbox	Automatic

Zustandsbericht

Value reducing factors

No.	Component group	Description
1	Wheel / tyres	Alloy rim - rear left side - Scratched - No deduction
2	Trim / covers	Boot lid - interior trim - Scratched - Loss in value
3	Front bumper	Front bumper - Scratched - Smart repair
4	Side panel - rear left side	Sill - Scratched - Smart repair
5	Braking system	Brake pads - rear - Worn - Replace
6	Braking system	Brake pads - front - Worn - Replace
7	Electronic systems	Electronic systems (Motorkontrolleuchte an) - Due - Perform diagnosis

Wear and tear

No.	Component group	Description
1	Body	Body - Stone chips - No deduction
2	Vehicle glazing	Windscreen - Stone chips - No deduction
3	Interior	Interior - Abrasion - No deduction

Missing parts

Missing part

Detected repainting

No.	Location
None detectable	

Main tyres

Axle	Tyre size	Manufacturer	Type of tyre	Tread depth	Roadworthy	Permissibility
1	205/65 R16 95H	Pirelli	Winter tyres	5mm - 5mm	o.k.	
2	205/65 R16 95H	Pirelli	Winter tyres	6mm - 6mm	o.k.	

TÜV SÜD Auto Plus GmbH
Gutenbergstr. 13
70771 Leinfelden-Echterdingen

Inspection location
SAP SE
Dietmar-Hopp-Allee 16
69190 Walldorf

Inspection date: 23 Dec 2024
Protocol number: 37690457
Delivery date: 23 Dec 2024



Auto Plus

Additional tyres

Axle	Tyre size	Manufacturer	Type of tyre	Tread depth	Roadworthy	Permissibility
1	205/65 R16 95W	Nexen	Summer tyres	4mm - 4mm	o.k.	
2	205/65 R16 95W	Nexen	Summer tyres	6mm - 6mm	o.k.	

The wear and tear condition and possible damages to the tyres are considered in the value.

Comments

Keine Gewähr auf Vollständigkeit und
Richtigkeit der angezeigten Ausstattung.
Techn. Änderungen vorbehalten
Das Fahrzeug weist dem Alter, der Laufleistung und dem
Einsatzzweck entsprechende Gebrauchsspuren auf.
elektr. Komponenten geprüft, i. O.

Lackwerte geprüft, i. O.

Fahrzeug war zum Zeitpunkt der Besichtigung regennass, weitere Beschädigungen können nicht ausgeschlossen werden.

TÜV SÜD Auto Plus GmbH
Gutenbergstr. 13
70771 Leinfelden-Echterdingen

Inspection location
SAP SE
Dietmar-Hopp-Allee 16
69190 Walldorf

Inspection date: 23 Dec 2024
Protocol number: 37690457
Delivery date: 23 Dec 2024



Auto Plus

Vehicle details

Manufacturer	BMW	Inspection condition	conditional: light/moisture/dirt
Type / Model	218d Active Tourer	Mileage (Read)	41,978 km
Vehicle Identification number	WBA21BY0807M11558	First registration	30 Jan 2023

Vehicle identification:

The vehicle identification number (VIN) was read and its conformity with the documents submitted was verified during the inspection by the undersigned.

Inspection conditions:

A proper visual inspection of the paintwork and the bodywork was only possible to a limited extent due to insufficient lighting conditions/wetness or dirt. At the time of the inspection, the condition could not be ensured for an adequate assessment. The expert therefore recommends a further inspection to reduce the prognosis risk.

General condition:

The vehicle shows traces of wear and tear corresponding to its age and purpose

Overview pictures



Figure 1: Diagonal front



Figure 2: Diagonal front



Figure 3: Diagonal rear



Figure 4: Diagonal rear

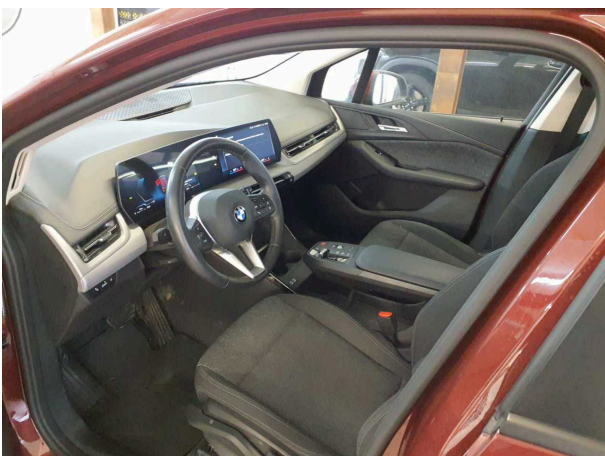


Figure 5: Interior



Figure 6: Interior



Figure 7: Interior



Figure 8: Interior



Figure 9: Interior



Figure 10: Misc.

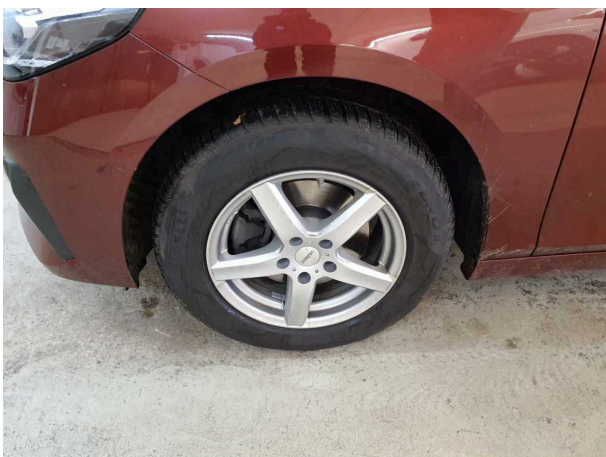


Figure 11: Misc.

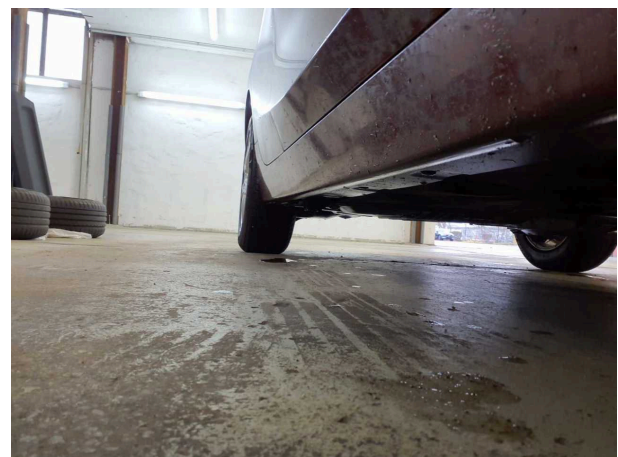


Figure 12: Misc.



Figure 13: Misc.



Figure 14: Misc.



Figure 15: Misc.

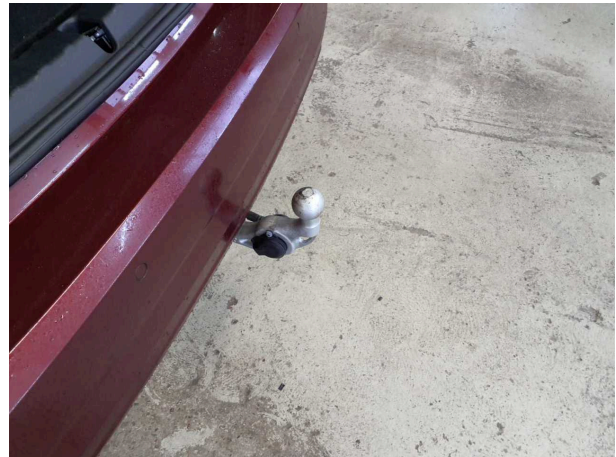


Figure 16: Misc.



Figure 17: Misc.



Figure 18: Misc.

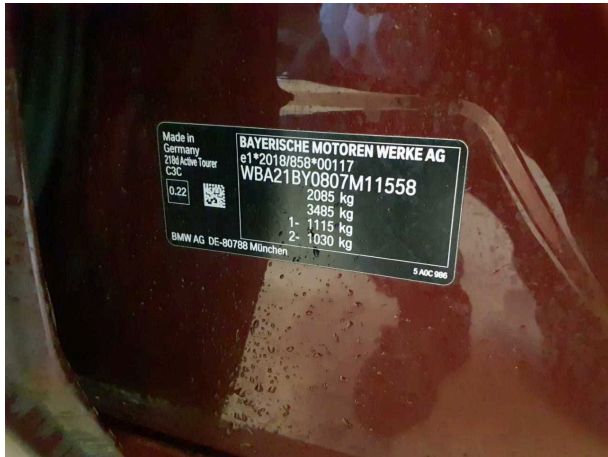


Figure 19: Misc.



Figure 20: Misc.



Figure 21: Misc.



Figure 22: Misc.

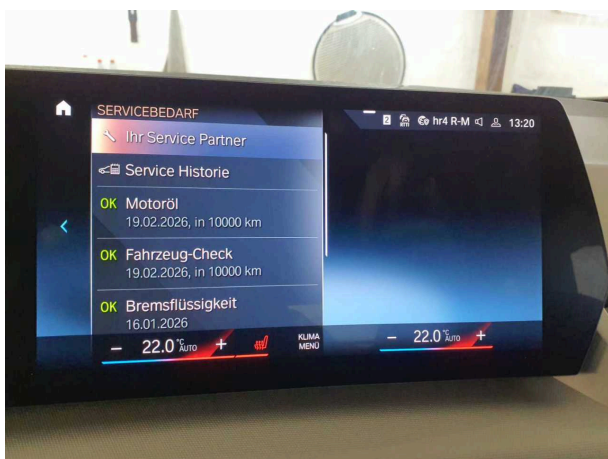


Figure 23: Misc.

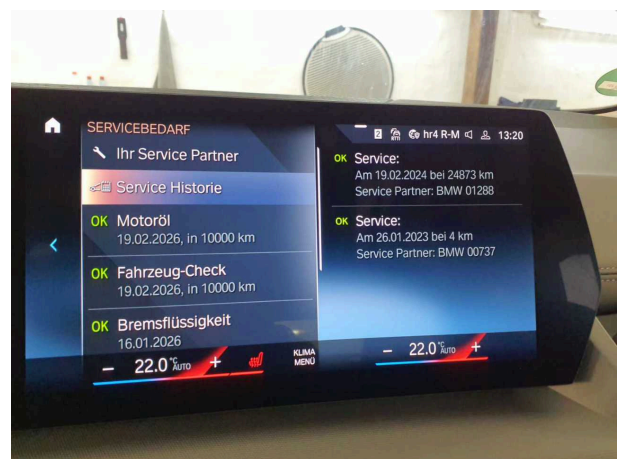


Figure 24: Misc.

Pictures of damage



Damage #1: Wheel / tyres: Alloy rim - rear left side - Scratched - ...
deduction



Damage #1: Wheel / tyres: Alloy rim - rear left side - Scratched -
No deduction



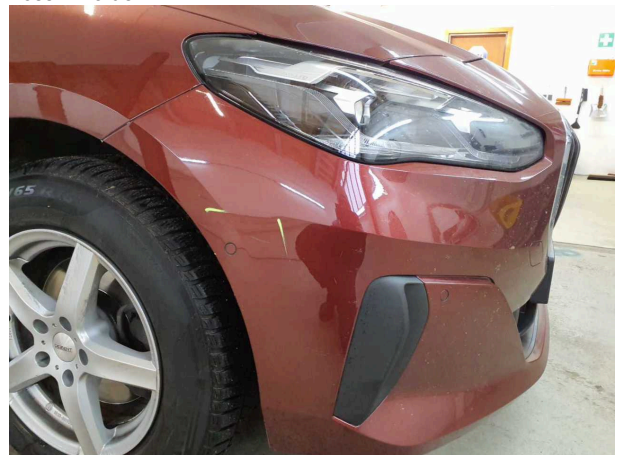
Damage #2: Trim / covers: Boot lid - interior trim - Scratched - Loss
in value



Damage #2: Trim / covers: Boot lid - interior trim - Scratched -
Loss in value



Damage #2: Trim / covers: Boot lid - interior trim - Scratched - Loss
in value



Damage #3: Front bumper: Front bumper - Scratched - Smart
repair



Damage #3: Front bumper: Front bumper - Scratched - Smart repair



Damage #4: Side panel - rear left side: Sill - Scratched - Smart repair



Damage #4: Side panel - rear left side: Sill - Scratched - Smart repair



Damage #5: Braking system: Brake pads - rear - Worn - Replace



Damage #6: Braking system: Brake pads - front - Worn - Replace



Damage #7: Electronic systems: Electronic systems (Motorkontrollleuchte an) - Due - Perform diagnosis