



WBA21BY0807L48171

Vehicle details

Operator		Inspection condition	Sufficient
License number		Mileage (Read)	67,988 km
Manufacturer	BMW	Next maintenance in	-3,300 km
Type / Model	218d Active Tourer	Main inspection (Read from ZBI)	09/2025
Vehicle Identification number	WBA21BY0807L48171	Power / Engine displacement	110 kW / 1,995 ccm
First registration	13 Sept 2022	Upholstery/Colour	/
Last maintenance		Paintwork	
Fuel type	Diesel	Gearbox	Automatic

Zustandsbericht

Value reducing factors

No.	Component group	Description
1	Documents	Service book (Wartungsnachweise fehlen) - No deduction
2	Screen cleaning	Wiper arm - rear (Abdeckung fehlt) - Replace
3	Misc.	Inspection / maintenance - Due - Replace

Wear and tear

No.	Component group	Description
1	Rear bumper	Rear bumper - Scratch(es) - No deduction
2	Body	Body (Steinschläge) - Scratch(es) - No deduction
3	Interior	Interior - Abrasion - No deduction
4	Vehicle glazing	Windscreen (Steinschläge) - No deduction

Missing parts

Missing part

Detected repainting

No.	Location
None detectable	

Main tyres

Axle	Tyre size	Manufacturer	Type of tyre	Tread depth	Roadworthy	Permissibility
1	205/65 R16 95H	Pirelli	Winter tyres	5mm - 5mm	o.k.	
2	205/65 R16 95H	Pirelli	Winter tyres	5mm - 5mm	o.k.	

TÜV SÜD Auto Plus GmbH
Gutenbergstr. 13
70771 Leinfelden-Echterdingen

Inspection location
SAP SE
Dietmar-Hopp-Allee 16
69190 Walldorf

Inspection date: 28 Feb 2025
Protocol number: 38641690
Delivery date: 28 Feb 2025



Auto Plus

Additional tyres

Axle	Tyre size	Manufacturer	Type of tyre	Tread depth	Roadworthy	Permissibility
1	205/60 R17 97W	Bridgestone	Summer tyres	4mm - 4mm	o.k.	
2	205/60 R17 97W	Bridgestone	Summer tyres	4mm - 4mm	o.k.	

Replacement

Type	Tyre size	Manufacturer	Type of tyre	Tread depth	Expiration date
Tirefit					01/2027

The wear and tear condition and possible damages to the tyres are considered in the value.

Comments

Keine Gewähr auf Vollständigkeit und
Richtigkeit der angezeigten Ausstattung.
Techn. Änderungen vorbehalten
Das Fahrzeug weist dem Alter, der Laufleistung und dem
Einsatzzweck entsprechende Gebrauchsspuren auf.
elektr. Komponenten geprüft, i. O.

Lackwerte geprüft, i. O.

TÜV SÜD Auto Plus GmbH
Gutenbergstr. 13
70771 Leinfelden-Echterdingen

Inspection location
SAP SE
Dietmar-Hopp-Allee 16
69190 Walldorf

Inspection date: 28 Feb 2025
Protocol number: 38641690
Delivery date: 28 Feb 2025



Auto Plus

Vehicle details

Manufacturer	BMW	Inspection condition	Sufficient
Type / Model	218d Active Tourer	Mileage (Read)	67,988 km
Vehicle Identification number	WBA21BY0807L48171	First registration	13 Sept 2022

Vehicle identification:

The vehicle identification number (VIN) was read and its conformity with the documents submitted was established during the inspection by the undersigned.

Inspection conditions:

The inspection conditions were sufficient to assess the vehicle. The inspection was carried out using the lighting conditions provided by the photo system included in the report.

General condition:

The vehicle shows traces of wear and tear corresponding to its age and purpose

Overview pictures



Figure 1: Diagonal front



Figure 2: Diagonal front



Figure 3: Diagonal rear



Figure 4: Diagonal rear



Figure 5: Interior



Figure 6: Interior



Figure 7: Interior



Figure 8: Interior



Figure 9: Interior



Figure 10: Misc.



Figure 11: Misc.



Figure 12: Misc.



Figure 13: Misc.



Figure 14: Misc.



Figure 15: Misc.



Figure 16: Misc.



Figure 17: Misc.

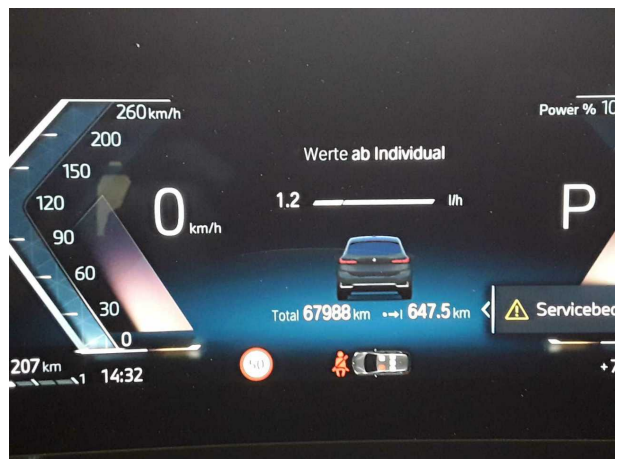


Figure 18: Misc.



Figure 19: Misc.



Figure 20: Misc.



Figure 21: Misc.



Figure 22: Misc.



Figure 23: Misc.

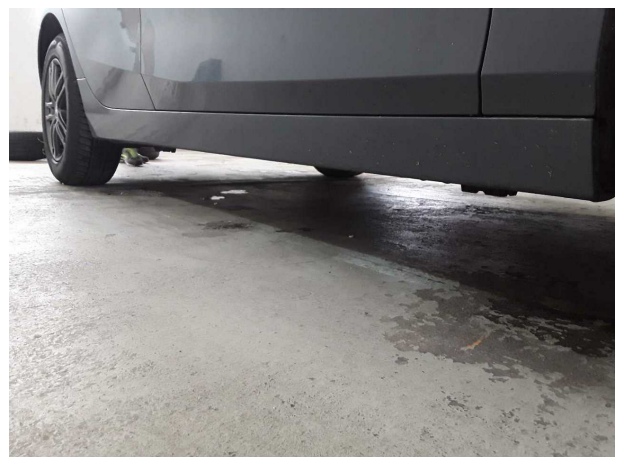


Figure 24: Misc.

Pictures of damage



Damage #2: Screen cleaning: Wiper arm - rear (Abdeckung fehlt) - Replace



Damage #2: Screen cleaning: Wiper arm - rear (Abdeckung fehlt) - Replace



Damage #3: Misc.: Inspection / maintenance - Due - Replace