

WBA5X71090FJ74233

Vehicle details

Operator		Inspection condition	conditional: light/moisture/dirt
License number		Mileage (Read)	103,686 km
Manufacturer	BMW	Next maintenance in	1 Monat(e)
Type / Model	330i xDrive	Main inspection (Report on hand)	03/2025
Vehicle Identification number	WBA5X71090FJ74233	Power / Engine displacement	190 kW / 1,998 ccm
First registration	17 Mar 2020	Upholstery/Colour	/
Last maintenance		Paintwork	
Fuel type	Petrol	Gearbox	Automatic

Zustandsbericht

Value reducing factors

No.	Component group	Description
1	Door - front right side	Door handle - outside - Scratch(es) - Cover / polish
2	Boot lid / rear door	Boot lid - Scratch(es) - Cover / polish
3	Side panel - rear left side	Side panel - dent(s) - Smart repair
4	Trim / covers	Door trim - front left side - dent(s) - Replace

Wear and tear

No.	Component group	Description
1	Interior	Interior - Abrasion - No deduction
2	Body	Body (Steinschläge) - Scratch(es) - No deduction

Missing parts

Missing part

Detected repainting

No.	Location
	None detectable

Main tyres

Axle	Tyre size	Manufacturer	Type of tyre	Tread depth	Roadworthy	Permissibility
1	225/50 R17 98Y	Michelin	Summer tyres	5mm - 5mm	Not o.k.	o.k.
2	225/50 R17 98Y	Bridgestone	Summer tyres	5mm - 5mm	Not o.k.	o.k.

TÜV SÜD Auto Plus GmbH
Gutenbergstr. 13
70771 Leinfelden-Echterdingen

Inspection location
Allane Mobility Consulting
GmbH

69190 Walldorf

Inspection date: 21 Feb 2025

Protocol number: 38522994

Delivery date: 21 Feb 2025



Auto Plus

Additional tyres

Axle	Tyre size	Manufacturer	Type of tyre	Tread depth	Roadworthy	Permissibility
1	225/50 R17 98H	Pirelli	Winter tyres	6mm - 6mm	o.k.	
2	225/50 R17 98H	Pirelli	Winter tyres	5mm - 5mm	o.k.	

The wear and tear condition and possible damages to the tyres are considered in the value.

Comments

Keine Gewähr auf Vollständigkeit und
Richtigkeit der angezeigten Ausstattung.
Techn. Änderungen vorbehalten
Das Fahrzeug weist dem Alter, der Laufleistung und dem
Einsatzzweck entsprechende Gebrauchsspuren auf.
elektr. Komponenten geprüft, i. O.

Lackwerte geprüft, i. O.

TÜV SÜD Auto Plus GmbH
Gutenbergstr. 13
70771 Leinfelden-Echterdingen

Inspection location
Allane Mobility Consulting
GmbH
69190 Walldorf

Inspection date: 21 Feb 2025
Protocol number: 38522994
Delivery date: 21 Feb 2025



Vehicle details

Manufacturer	BMW	Inspection condition	conditional: light/moisture/dirt
Type / Model	330i xDrive	Mileage (Read)	103,686 km
Vehicle Identification number	WBA5X71090FJ74233	First registration	17 Mar 2020

Vehicle identification:

The vehicle identification number (VIN) was read and its conformity with the documents submitted was established during the inspection by the undersigned.

Inspection conditions:

A proper visual inspection of the paintwork and the bodywork was only possible to a limited extent due to insufficient lighting conditions/wetness or dirt. At the time of the inspection, the condition could not be ensured for an adequate assessment. The expert therefore recommends a further inspection to reduce the prognosis risk.

General condition:

The vehicle shows traces of wear and tear corresponding to its age and purpose

Overview pictures



Figure 1: Diagonal front



Figure 2: Diagonal front



Figure 3: Diagonal rear



Figure 4: Diagonal rear



Figure 5: Interior



Figure 6: Interior



Figure 7: Interior



Figure 8: Interior



Figure 9: Interior



Figure 10: Interior



Figure 11: VIN



Figure 12: Mounted tyres



Figure 13: Misc.



Figure 14: Misc.



Figure 15: Misc.



Figure 16: Misc.

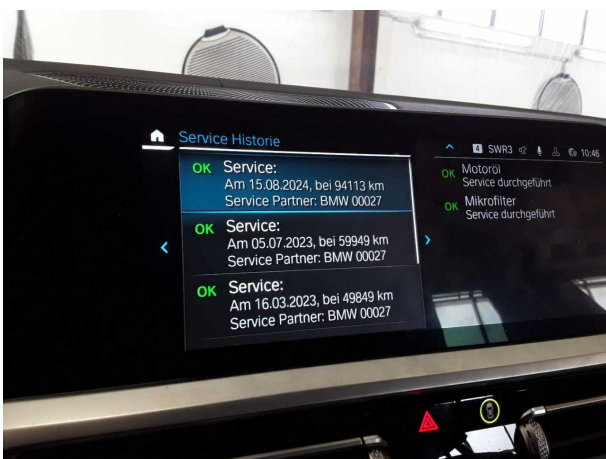


Figure 17: Misc.



Figure 18: Misc.



Figure 19: Misc.



Figure 20: Misc.



Figure 21: Misc.



Figure 22: Misc.

Pictures of damage



Damage #1: Door - front right side: Door handle - outside - Scratch(es) - Cover / polish



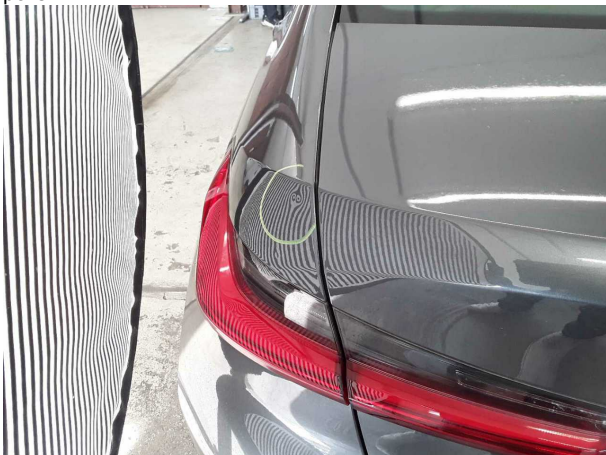
Damage #1: Door - front right side: Door handle - outside - Scratch(es) - Cover / polish



Damage #2: Boot lid / rear door: Boot lid - Scratch(es) - Cover / polish



Damage #2: Boot lid / rear door: Boot lid - Scratch(es) - Cove...
polish



Damage #3: Side panel - rear left side: Side panel - dent(s) - Smart repair



Damage #3: Side panel - rear left side: Side panel - dent(s) - Smart repair

TÜV SÜD Auto Plus GmbH
Gutenbergstr. 13
70771 Leinfelden-Echterdingen

Inspection location
Allane Mobility Consulting
GmbH

69190 Walldorf

Inspection date: 21 Feb 2025
Protocol number: 38522994
Delivery date: 21 Feb 2025



Auto Plus



Damage #3: Side panel - rear left side: Side panel - dent(s) - Smart repair



Damage #4: Trim / covers: Door trim - front left side - dent(s) - Replace



Damage #4: Trim / covers: Door trim - front left side - dent(s) - Replace