

WAUZZZF26MN052345

Vehicle details

Operator		Inspection condition	conditional: light/moisture/dirt
License number		Mileage (Read)	115,313 km
Manufacturer	Audi	Next maintenance in	21 Tag(e)
Type / Model	A6 Avant	Main inspection (Read from ZBI)	04/2026
Vehicle Identification number	WAUZZZF26MN052345	Power / Engine displacement	120 kW / 1,968 ccm
First registration	22 Feb 2021	Upholstery/Colour	/
Last maintenance		Paintwork	
Fuel type	Hybrid Diesel / E	Gearbox	Automatic

Zustandsbericht

Value reducing factors

No.	Component group	Description
1	Misc.	Inspection / maintenance - Due - Replace
2	Side panel - rear right side	Side panel - Scratched - Paint
3	Front bumper	Front bumper - Scratched - Repair and paint
4	Door - front left side	Door - Dent / paintcoat damage - Repair and paint

Wear and tear

No.	Component group	Description
1	Body	Body (Steinschläge) - Scratch(es) - No deduction
2	Interior	Interior - Abrasion - No deduction
3	Vehicle glazing	Windscreen (Steinschläge) - No deduction

Missing parts

Missing part

Detected repainting

No.	Location
None detectable	

Main tyres

Axle	Tyre size	Manufacturer	Type of tyre	Tread depth	Roadworthy	Permissibility
1	225/55 R18 102V	Goodyear	Summer tyres	5mm - 5mm	o.k.	
2	225/55 R18 102V	Goodyear	Summer tyres	5mm - 5mm	o.k.	

TÜV SÜD Auto Plus GmbH
Gutenbergstr. 13
70771 Leinfelden-Echterdingen

Inspection location
Allane Mobility Consulting
GmbH

69190 Walldorf

Inspection date: 26 Feb 2025
Protocol number: 38597071
Delivery date: 26 Feb 2025



Auto Plus

Additional tyres

Axle	Tyre size	Manufacturer	Type of tyre	Tread depth	Roadworthy	Permissibility
1	225/55 R18 102V	Continental	Winter tyres	4mm - 4mm	o.k.	
2	225/55 R18 102V	Pirelli	Winter tyres	4mm - 4mm	o.k.	

Replacement

Type	Tyre size	Manufacturer	Type of tyre	Tread depth	Expiration date
Tirefit					12/2025

The wear and tear condition and possible damages to the tyres are considered in the value.

Comments

Keine Gewähr auf Vollständigkeit und
Richtigkeit der angezeigten Ausstattung.
Techn. Änderungen vorbehalten
Das Fahrzeug weist dem Alter, der Laufleistung und dem
Einsatzzweck entsprechende Gebrauchsspuren auf.
elektr. Komponenten geprüft, i. O.

Lackwerte geprüft, i. O.

Fahrzeug war zum Zeitpunkt der Besichtigung verschmutzt, weitere Beschädigungen können nicht ausgeschlossen werden.

TÜV SÜD Auto Plus GmbH
Gutenbergstr. 13
70771 Leinfelden-Echterdingen

Inspection location
Allane Mobility Consulting
GmbH
69190 Walldorf

Inspection date: 26 Feb 2025
Protocol number: 38597071
Delivery date: 26 Feb 2025



Vehicle details

Manufacturer	Audi	Inspection condition	conditional: light/moisture/dirt
Type / Model	A6 Avant	Mileage (Read)	115,313 km
Vehicle Identification number	WAUZZZF26MN052345	First registration	22 Feb 2021

Vehicle identification:

The vehicle identification number (VIN) was read and its conformity with the documents submitted was established during the inspection by the undersigned.

Inspection conditions:

A proper visual inspection of the paintwork and the bodywork was only possible to a limited extent due to insufficient lighting conditions/wetness or dirt. At the time of the inspection, the condition could not be ensured for an adequate assessment. The expert therefore recommends a further inspection to reduce the prognosis risk.

General condition:

The vehicle shows traces of wear and tear corresponding to its age and purpose

Overview pictures



Figure 1: Diagonal front



Figure 2: Diagonal front

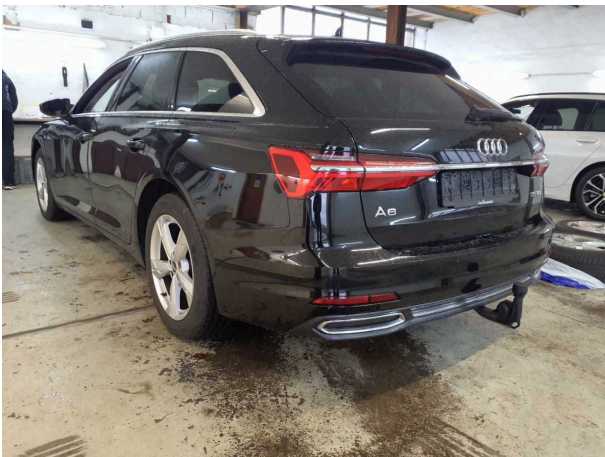


Figure 3: Diagonal rear

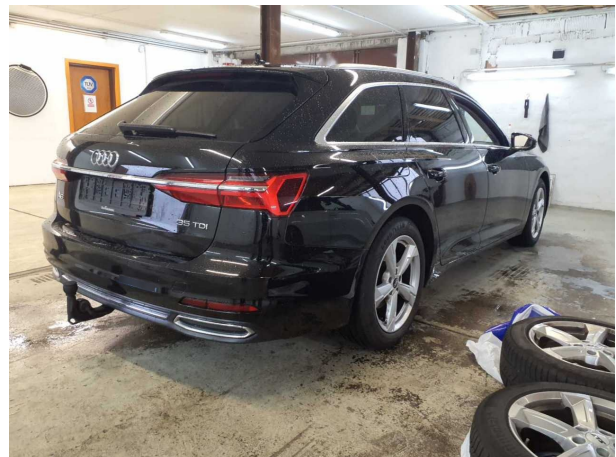


Figure 4: Diagonal rear



Figure 5: Interior



Figure 6: Interior



Figure 7: Interior



Figure 8: Interior



Figure 9: Interior



Figure 10: Interior



Figure 11: Misc.

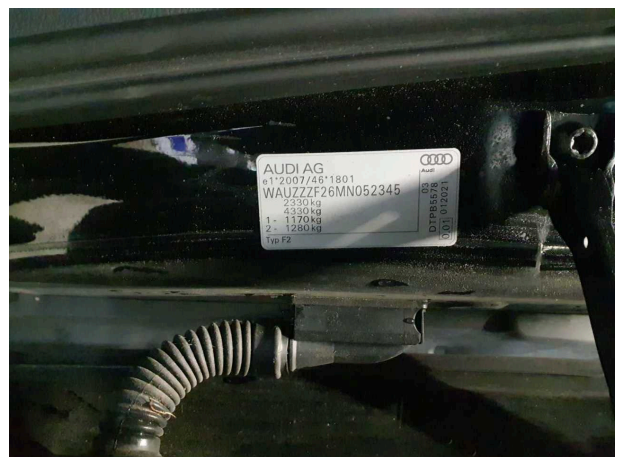


Figure 12: Misc.

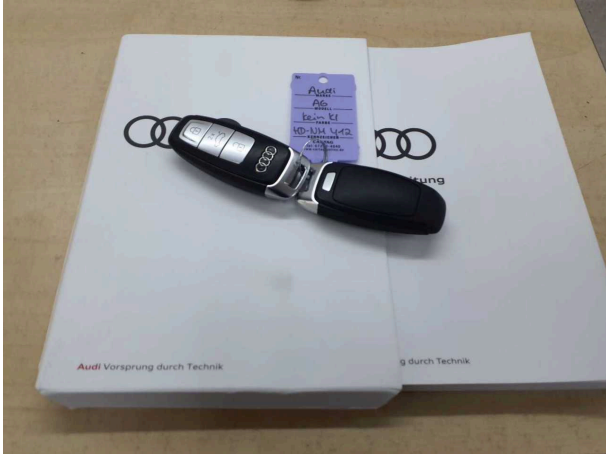


Figure 13: Misc.



Figure 14: Misc.

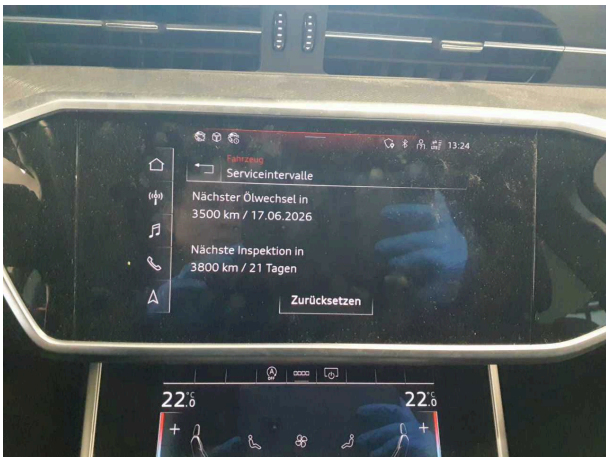


Figure 15: Misc.



Figure 16: Misc.

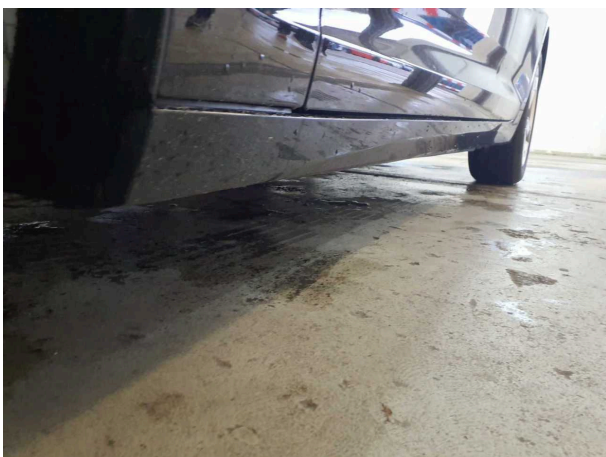


Figure 17: Misc.

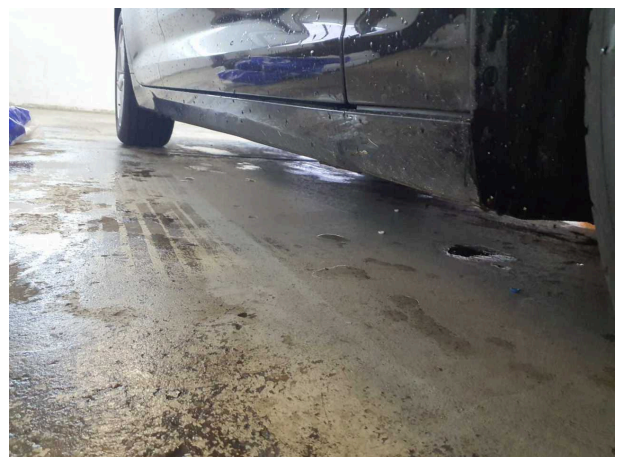


Figure 18: Misc.

TÜV SÜD Auto Plus GmbH
Gutenbergstr. 13
70771 Leinfelden-Echterdingen

Inspection location
Allane Mobility Consulting
GmbH

69190 Walldorf

Inspection date: 26 Feb 2025
Protocol number: 38597071
Delivery date: 26 Feb 2025



Figure 19: Misc.

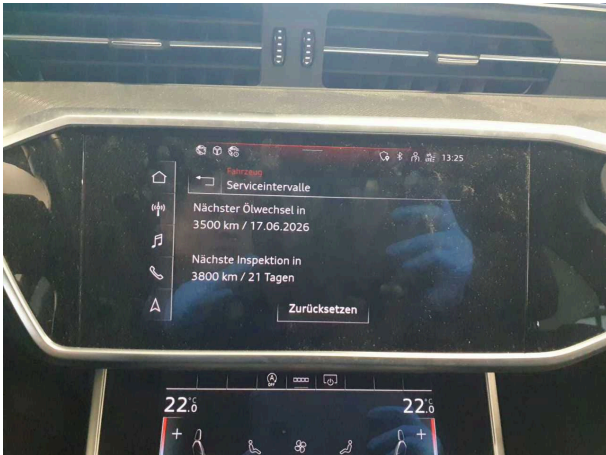


Figure 20: Misc.

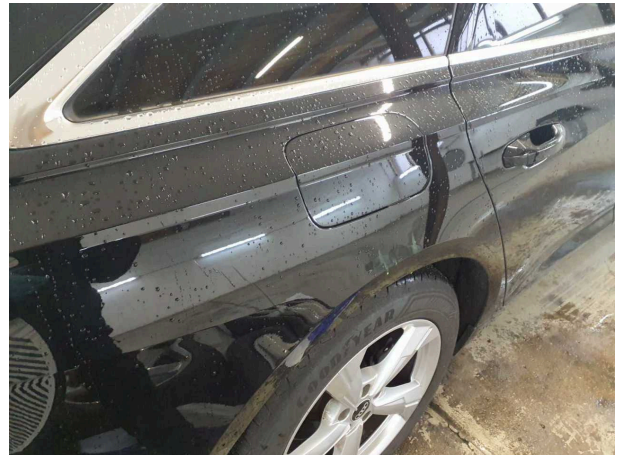


Figure 21: Misc.

Pictures of damage



Damage #1: Misc.: Inspection / maintenance - Due - Replace



Damage #2: Side panel - rear right side: Side panel - Scratch...
- Paint



Damage #2: Side panel - rear right side: Side panel - Scratched -
Paint



Damage #3: Front bumper: Front bumper - Scratched - Repair
and paint



Damage #3: Front bumper: Front bumper - Scratched - Repair
and paint



Damage #3: Front bumper: Front bumper - Scratched - Repair
and paint



Damage #3: Front bumper: Front bumper - Scratched - Repair and paint



Damage #4: Door - front left side: Door - Dent / paintcoat damage - Repair and paint



Damage #4: Door - front left side: Door - Dent / paintcoat damage - Repair and paint



Damage #4: Door - front left side: Door - Dent / paintcoat damage - Repair and paint