

WBA6N31060FK26551

Vehicle details

Operator		Inspection condition	conditional: light/moisture/dirt
License number		Mileage (Read)	125,501 km
Manufacturer	BMW	Next maintenance in	8 Monat(e)
Type / Model	330e	Main inspection (Report on hand)	10/2025
Vehicle Identification number	WBA6N31060FK26551	Power / Engine displacement	135 kW / 1,998 ccm
First registration	20 Oct 2020	Upholstery/Colour	/
Last maintenance	01/2025, 124,876 km	Paintwork	
Fuel type	Hybr.B/E ext. edition	Gearbox	Automatic

Zustandsbericht

Value reducing factors

No.	Component group	Description
1	Wheel / tyres	Alloy rim - front right side - Scratched - No deduction
2	Rear bumper	Rear bumper - Scratched - Smart repair
3	Boot lid / rear door	Boot lid - Dent(s) - Smooth repair work
4	Front bumper	Front bumper - Scratched - Smart repair

Wear and tear

No.	Component group	Description
1	Body	Body (Steinschläge) - Scratch(es) - No deduction
2	Vehicle glazing	Windscreen (Steinschläge) - No deduction

Missing parts

Missing part

Detected repainting

No.	Location
None detectable	

Main tyres

Axle	Tyre size	Manufacturer	Type of tyre	Tread depth	Roadworthy	Permissibility
1	225/45 R18 95V	Pirelli	Winter tyres	7mm - 7mm	o.k.	
2	225/45 R18 95V	Pirelli	Winter tyres	4mm - 4mm	o.k.	

TÜV SÜD Auto Plus GmbH
Gutenbergstr. 13
70771 Leinfelden-Echterdingen

Inspection location
Allane Mobility Consulting
GmbH
69190 Walldorf

Inspection date: 11 Feb 2025
Protocol number: 38350612
Delivery date: 11 Feb 2025



Additional tyres

Axle	Tyre size	Manufacturer	Type of tyre	Tread depth	Roadworthy	Permissibility
1	225/45 R18 95Y	Bridgestone	Summer tyres	4mm - 4mm	o.k.	
2	255/40 R18 99Y	Bridgestone	Summer tyres	3mm - 3mm	o.k.	

The wear and tear condition and possible damages to the tyres are considered in the value.

Comments

Keine Gewähr auf Vollständigkeit und
Richtigkeit der angezeigten Ausstattung.
Techn. Änderungen vorbehalten
Das Fahrzeug weist dem Alter, der Laufleistung und dem
Einsatzzweck entsprechende Gebrauchsspuren auf.
elektr. Komponenten geprüft, i. O.

Lackwerte geprüft, i. O.

Fahrzeug war zum Zeitpunkt der Besichtigung regennass, weitere Beschädigungen können nicht ausgeschlossen werden.

TÜV SÜD Auto Plus GmbH
Gutenbergstr. 13
70771 Leinfelden-Echterdingen

Inspection location
Allane Mobility Consulting
GmbH
69190 Walldorf

Inspection date: 11 Feb 2025
Protocol number: 38350612
Delivery date: 11 Feb 2025



Vehicle details

Manufacturer	BMW	Inspection condition	conditional: light/moisture/dirt
Type / Model	330e	Mileage (Read)	125,501 km
Vehicle Identification number	WBA6N31060FK26551	First registration	20 Oct 2020

Vehicle identification:

The vehicle identification number (VIN) was read and its conformity with the documents submitted was verified during the inspection by the undersigned.

Inspection conditions:

A proper visual inspection of the paintwork and the bodywork was only possible to a limited extent due to insufficient lighting conditions/wetness or dirt. At the time of the inspection, the condition could not be ensured for an adequate assessment. The expert therefore recommends a further inspection to reduce the prognosis risk.

General condition:

The vehicle shows traces of wear and tear corresponding to its age and purpose

Overview pictures



Figure 1: Diagonal front



Figure 2: Diagonal front



Figure 3: Diagonal rear



Figure 4: Diagonal rear



Figure 5: Interior



Figure 6: Interior



Figure 7: Interior



Figure 8: Interior

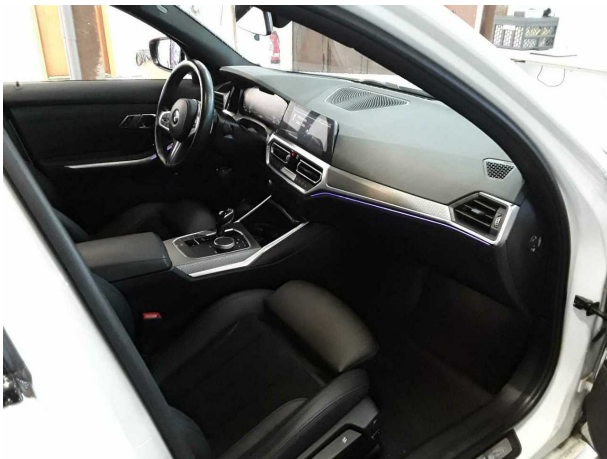


Figure 9: Interior

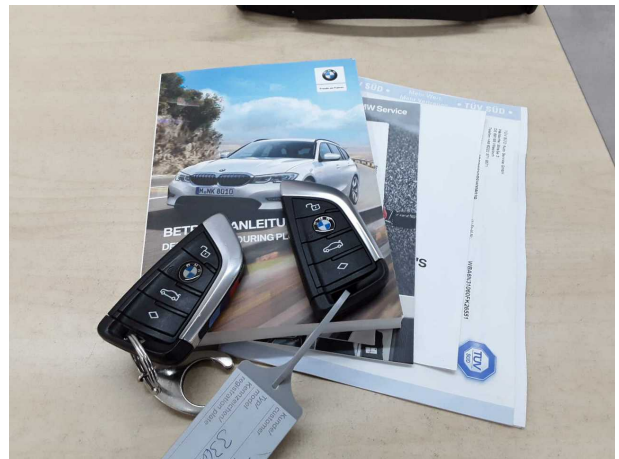


Figure 10: Misc.



Figure 11: Misc.



Figure 12: Misc.



Figure 13: Misc.



Figure 14: Misc.



Figure 15: Misc.



Figure 16: Misc.



Figure 17: Misc.



Figure 18: Misc.



Figure 19: Misc.



Figure 20: Misc.



Figure 21: Misc.



Figure 22: Misc.

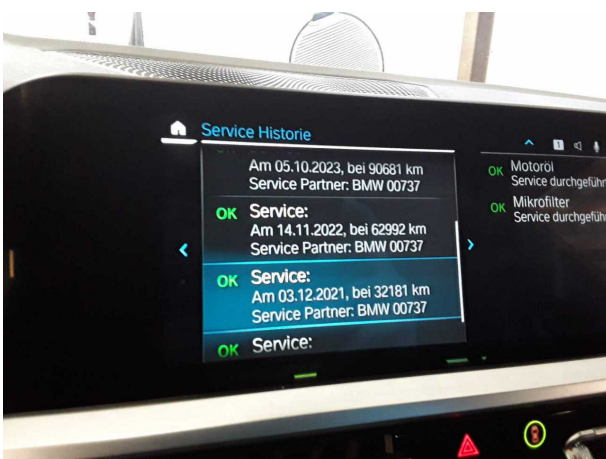


Figure 23: Misc.

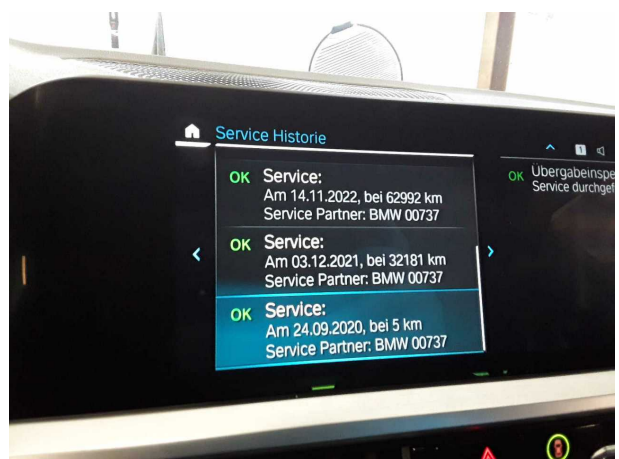


Figure 24: Misc.

TÜV SÜD Auto Plus GmbH
Gutenbergstr. 13
70771 Leinfelden-Echterdingen

Inspection location
Allane Mobility Consulting
GmbH
69190 Walldorf

Inspection date: 11 Feb 2025
Protocol number: 38350612
Delivery date: 11 Feb 2025



Figure 25: Misc.

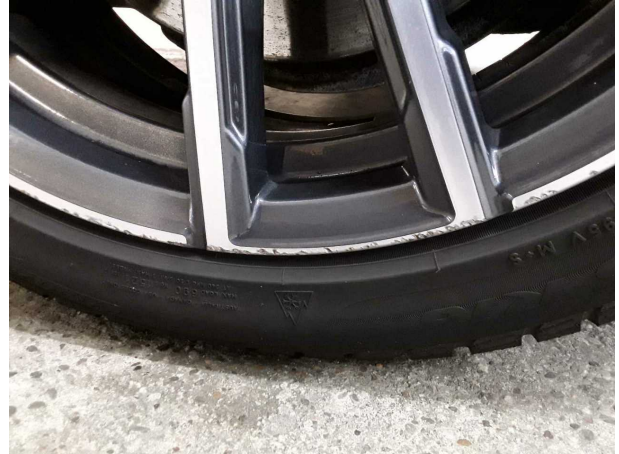


Figure 26: Misc.

Pictures of damage



Damage #1: Wheel / tyres: Alloy rim - front right side - Scratched - No deduction



Damage #1: Wheel / tyres: Alloy rim - front right side - Scratched - No deduction



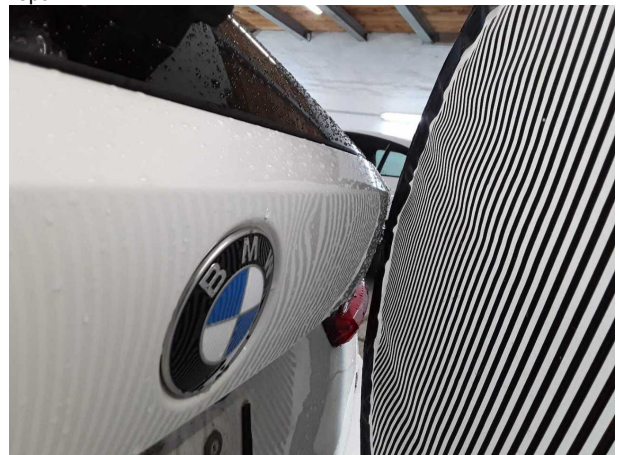
Damage #2: Rear bumper: Rear bumper - Scratched - Smart repair



Damage #2: Rear bumper: Rear bumper - Scratched - Smart repair



Damage #3: Boot lid / rear door: Boot lid - Dent(s) - Smooth repair work



Damage #3: Boot lid / rear door: Boot lid - Dent(s) - Smooth repair work

TÜV SÜD Auto Plus GmbH
Gutenbergstr. 13
70771 Leinfelden-Echterdingen

Inspection location
Allane Mobility Consulting
GmbH

69190 Walldorf

Inspection date: 11 Feb 2025
Protocol number: 38350612
Delivery date: 11 Feb 2025



Auto Plus



Damage #4: Front bumper: Front bumper - Scratched - Smart repair



Damage #4: Front bumper: Front bumper - Scratched - Smart repair



Damage #4: Front bumper: Front bumper - Scratched - Smart repair



Damage #4: Front bumper: Front bumper - Scratched - Smart repair