



WAUZZZFY0L2113628

Vehicle details

Operator		Inspection condition	conditional: light/moisture/dirt
License number		Mileage (Read)	89,529 km
Manufacturer	Audi	Next maintenance in	531 Tag(e)
Type / Model	Q5 50 TFSI e	Main inspection (Read from ZBI)	12/2025
Vehicle Identification number	WAUZZZFY0L2113628	Power / Engine displacement	185 kW / 1,984 ccm
First registration	29 Oct 2020	Upholstery/Colour	/
Last maintenance		Paintwork	
Fuel type	Hybr.B/E ext. edition	Gearbox	Automatic

Zustandsbericht

Value reducing factors

No.	Component group	Description
1	Documents	Service book - No evidence
2	Door - front right side	Door - dent(s) - Smooth repair work
3	Instrument panel	Glove box lid (Schwergängig) - Un- / install

Wear and tear

No.	Component group	Description
The vehicle shows traces of wear and tear corresponding to its age and purpose		

Missing parts

Missing part

Detected repainting

No.	Location
None detectable	

Main tyres

Axle	Tyre size	Manufacturer	Type of tyre	Tread depth	Roadworthy	Permissibility
1	235/60 R18 107H	Pirelli	Winter tyres	5mm - 5mm	o.k.	
2	235/60 R18 107H	Pirelli	Winter tyres	5mm - 5mm	o.k.	

Additional tyres

Axle	Tyre size	Manufacturer	Type of tyre	Tread depth	Roadworthy	Permissibility
1	235/60 R18 103V	Michelin	Summer tyres	3mm - 3mm	o.k.	
2	235/60 R18 103V	Michelin	Summer tyres	4mm - 4mm	o.k.	

TÜV SÜD Auto Plus GmbH
Gutenbergstr. 13
70771 Leinfelden-Echterdingen

Inspection location
Allane Mobility Consulting
GmbH
69190 Walldorf

Inspection date: 26 Feb 2025
Protocol number: 38585259
Delivery date: 26 Feb 2025



Replacement

Type	Tyre size	Manufacturer	Type of tyre	Tread depth	Expiration date
Tirefit					08/2025

The wear and tear condition and possible damages to the tyres are considered in the value.

Comments

Keine Gewähr auf Vollständigkeit und
Richtigkeit der angezeigten Ausstattung.
Techn. Änderungen vorbehalten
Das Fahrzeug weist dem Alter, der Laufleistung und dem
Einsatzzweck entsprechende Gebrauchsspuren auf.
elektr. Komponenten geprüft, i. O.

Lackwerte geprüft, i. O.

TÜV SÜD Auto Plus GmbH
Gutenbergstr. 13
70771 Leinfelden-Echterdingen

Inspection location
Allane Mobility Consulting
GmbH
69190 Walldorf

Inspection date: 26 Feb 2025
Protocol number: 38585259
Delivery date: 26 Feb 2025



Vehicle details

Manufacturer	Audi	Inspection condition	conditional: light/moisture/dirt
Type / Model	Q5 50 TFSI e	Mileage (Read)	89,529 km
Vehicle Identification number	WAUZZZFY0L2113628	First registration	29 Oct 2020

Vehicle identification:

The vehicle identification number (VIN) was read and its conformity with the documents submitted was established during the inspection by the undersigned.

Inspection conditions:

A proper visual inspection of the paintwork and the bodywork was only possible to a limited extent due to insufficient lighting conditions/wetness or dirt. At the time of the inspection, the condition could not be ensured for an adequate assessment. The expert therefore recommends a further inspection to reduce the prognosis risk.

General condition:

The vehicle shows traces of wear and tear corresponding to its age and purpose

Overview pictures



Figure 1: Diagonal front



Figure 2: Diagonal front



Figure 3: Diagonal rear



Figure 4: Diagonal rear



Figure 5: Interior



Figure 6: Interior



Figure 7: Interior



Figure 8: Interior



Figure 9: Interior

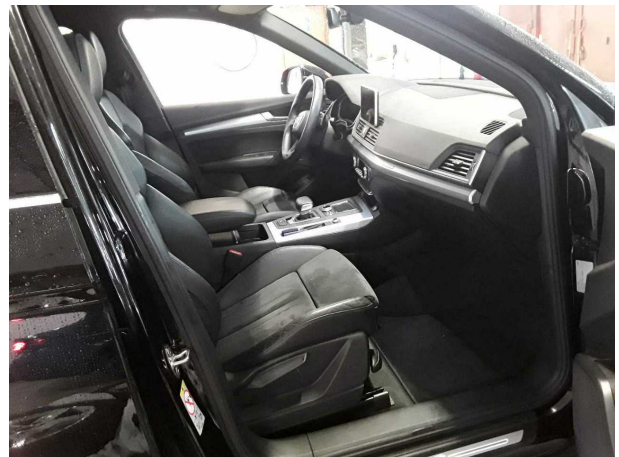


Figure 10: Interior

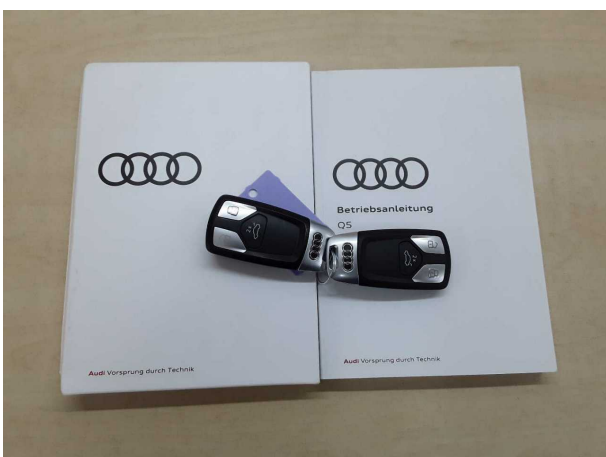


Figure 11: Misc.



Figure 12: Misc.



Figure 13: Misc.



Figure 14: Misc.

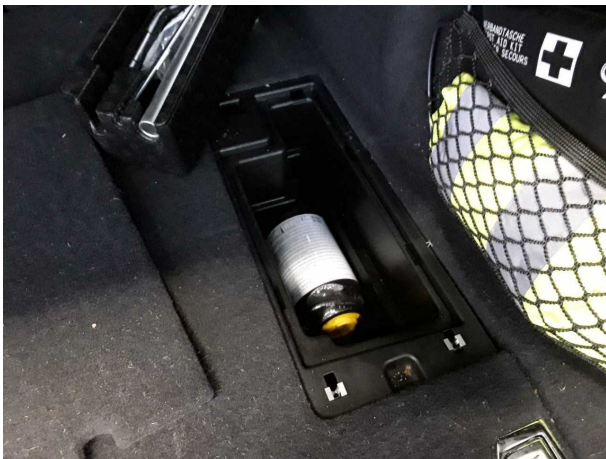


Figure 15: Misc.

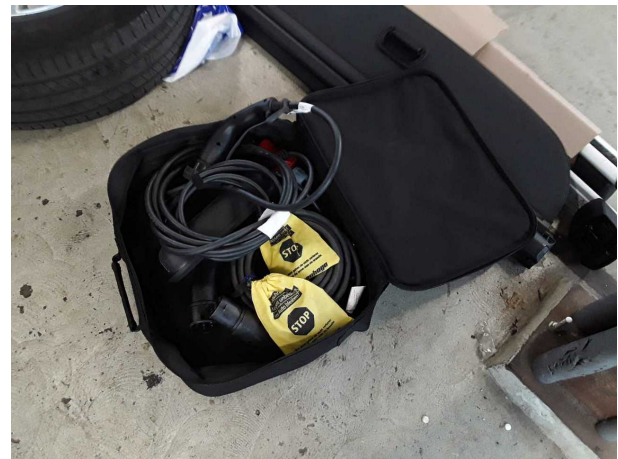


Figure 16: Misc.



Figure 17: Misc.

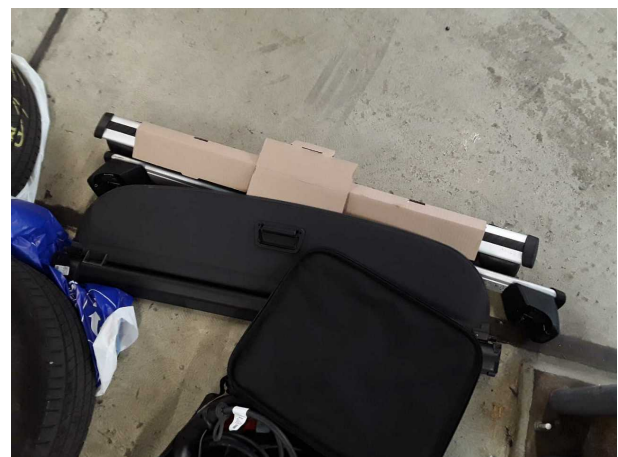


Figure 18: Misc.



Figure 19: Misc.



Figure 20: Misc.



Figure 21: Misc.



Figure 22: Misc.

TÜV SÜD Auto Plus GmbH
Gutenbergstr. 13
70771 Leinfelden-Echterdingen

Inspection location
Allane Mobility Consulting
GmbH

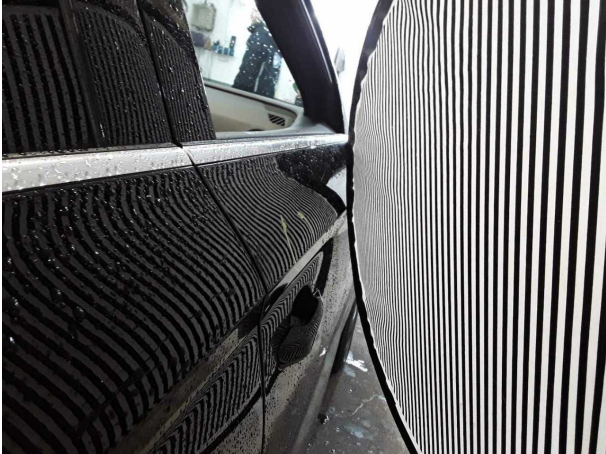
69190 Walldorf

Inspection date: 26 Feb 2025
Protocol number: 38585259
Delivery date: 26 Feb 2025



Auto Plus

Pictures of damage



Damage #2: Door - front right side: Door - dent(s) - Smooth repair work



Damage #2: Door - front right side: Door - dent(s) - Smooth repair work