



**WBY71EG0405Z00917**

## Vehicle details

Operator		Inspection condition	conditional: light/moisture/dirt
License number		Mileage (Read)	14,610 km
Manufacturer	BMW	Next maintenance in	12 Monat(e)
Type / Model	iX1 eDrive20 Sports Utility Vehicle5-türig	Main inspection	
Vehicle Identification number	WBY71EG0405Z00917	Power / Engine displacement	150 kW / 1 ccm
First registration	28 Feb 2024	Upholstery/Colour	Leather / Black
Last maintenance		Paintwork	Orange
Fuel type	Electric	Gearbox	

## Zustandsbericht

### Value reducing factors

No.	Component group	Description
1	Documents	Log book (fehlt) - Replace
2	Side panel - rear right side	Wheel arch - Scratch(es) - Smart repair
3	Rear bumper	Rear bumper - Scratch(es) - Smart repair
4	Door - front left side	Door - Scratch(es) - Smart repair
5	Equipment	charging cable (Haushaltsstrom / fehlt) - Replace
6	Bonnet	Bonnet - dent(s) - Repair and paint

### Wear and tear

No.	Component group	Description
1	Body	Body (Kratzer,Dellen) - Stone chips - No deduction

### Missing parts

Missing part
--------------

### Detected repainting

No.	Location
None detectable	

### Main tyres

Axle	Tyre size	Manufacturer	Type of tyre	Tread depth	Roadworthy	Permissibility
1	205/65 R17 100H	Pirelli	Winter tyres	6mm - 6mm	Not o.k.	Not o.k.
2	205/65 R17 100H	Pirelli	Winter tyres	7mm - 7mm	Not o.k.	Not o.k.

## Additional tyres

Axle	Tyre size	Manufacturer	Type of tyre	Tread depth	Roadworthy	Permissibility
1	225/55 R18 102Y	Hankook	Summer tyres	5mm - 5mm	Not o.k.	o.k.
2	225/55 R18 102Y	Hankook	Summer tyres	5mm - 5mm	Not o.k.	o.k.

## Replacement

Type	Tyre size	Manufacturer	Type of tyre	Tread depth	Expiration date
Tirefit					05/2029

The wear and tear condition and possible damages to the tyres are considered in the value.

## Equipment

### Equipment

Description
Air conditioning
Navigation unit with map view
Radio

## Comments

Keine Gewähr auf Vollständigkeit und Richtigkeit der angezeigten Ausstattung.  
Techn. Änderungen vorbehalten.  
Das Fahrzeug weist dem Alter, der Laufleistung und dem Einsatzzweck entsprechende Gebrauchsspuren auf.

elektr. Komponenten geprüft, i. O.

Lackwerte geprüft, i. O.

**TÜV SÜD Auto Plus GmbH**  
Gutenbergstr. 13  
70771 Leinfelden-Echterdingen

**Inspection location**  
Autokontor Bayern GmbH  
Windecker Straße 2  
61137 Schöneck

Inspection date: 18 Mar 2025  
**Protocol number: 38930108**



## Vehicle details

<b>Manufacturer</b>	BMW	<b>Inspection condition</b>	conditional: light/moisture/dirt
<b>Type / Model</b>	iX1 eDrive20 Sports Utility Vehicle5-türig	<b>Mileage (Read)</b>	14,610 km
<b>Vehicle Identification number</b>	WBY71EG0405Z00917	<b>First registration</b>	28 Feb 2024

**Vehicle identification:**

The vehicle identification number (VIN) was read and its conformity with the documents submitted was established during the inspection by the undersigned.

**Inspection conditions:**

A proper visual inspection of the paintwork and the bodywork was only possible to a limited extent due to insufficient lighting conditions/wetness or dirt. At the time of the inspection, the condition could not be ensured for an adequate assessment. The expert therefore recommends a further inspection to reduce the prognosis risk.

**General condition:**

The vehicle shows traces of wear and tear corresponding to its age and purpose

## Overview pictures



Figure 1: Diagonal front



Figure 2: Diagonal front



Figure 3: Diagonal rear



Figure 4: Diagonal rear



Figure 5: Interior



Figure 6: Interior



Figure 7: Interior



Figure 8: Interior



Figure 9: Interior



Figure 10: Interior



Figure 11: Interior

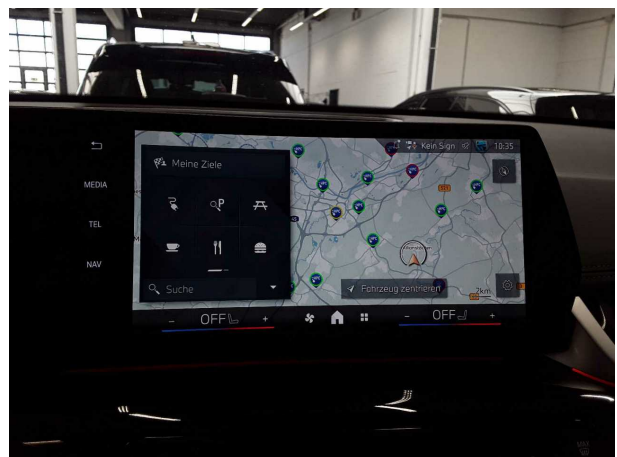


Figure 12: Interior



Figure 13: Interior



Figure 14: VIN



Figure 15: Accessories



Figure 16: Accessories

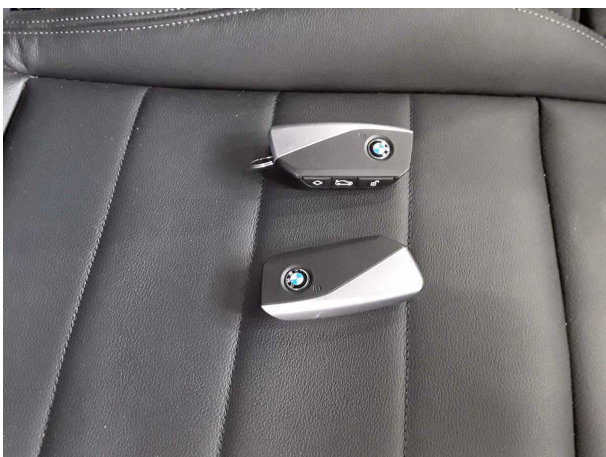


Figure 17: Documents

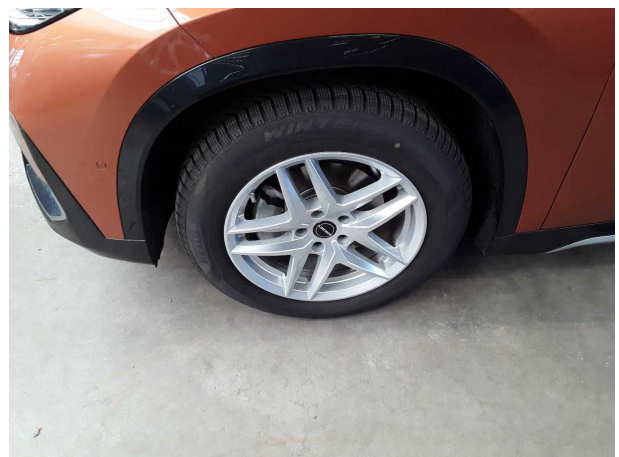


Figure 18: Mounted tyres



Figure 19: Misc.



Figure 20: Misc.



Figure 21: Misc.



Figure 22: Misc.

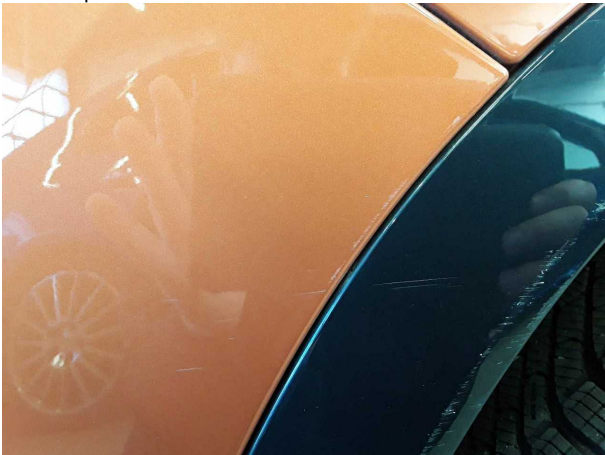
## Pictures of damage



**Damage #2:** Side panel - rear right side: Wheel arch - Scratch(es) - Smart repair



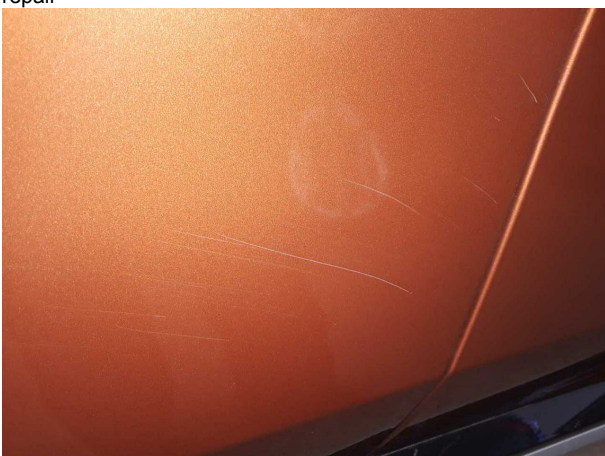
**Damage #2:** Side panel - rear right side: Wheel arch - Scratch(es) - Smart repair



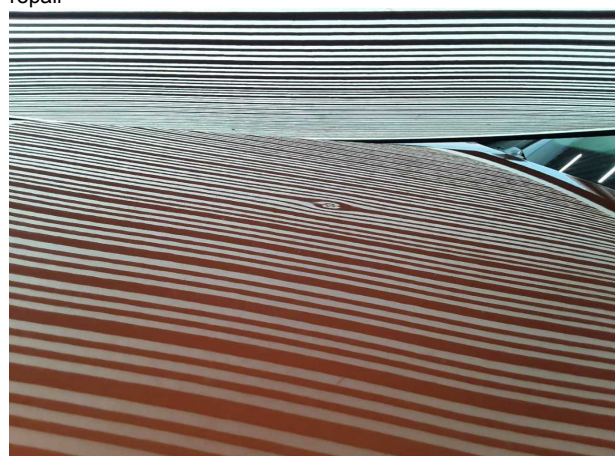
**Damage #3:** Rear bumper: Rear bumper - Scratch(es) - Smart repair



**Damage #4:** Door - front left side: Door - Scratch(es) - Smart repair



**Damage #4:** Door - front left side: Door - Scratch(es) - Smart repair



**Damage #6:** Bonnet: Bonnet - dent(s) - Repair and paint



**TÜV SÜD Auto Plus GmbH**  
Gutenbergstr. 13  
70771 Leinfelden-Echterdingen

**Inspection location**  
Autokontor Bayern GmbH  
Windecker Straße 2  
61137 Schöneck

Inspection date: 18 Mar 2025  
**Protocol number: 38930108**



Auto Plus



**Damage #6:** Bonnet: Bonnet - dent(s) - Repair and paint