



WBA11AH080CG56344

Vehicle details

Operator		Inspection condition	Sufficient
License number		Mileage (Read)	50,860 km
Manufacturer	BMW	Next maintenance in	30,000 km
Type / Model	530d	Main inspection (Report on hand)	02/2026
Vehicle Identification number	WBA11AH080CG56344	Power / Engine displacement	210 kW / 2,993 ccm
First registration	22 Feb 2021	Upholstery/Colour	/
Last maintenance	02/2025, 49,707 km	Paintwork	
Fuel type	Hybrid Diesel / E	Gearbox	Automatic

Zustandsbericht

Value reducing factors

No.	Component group	Description
1	Side panel - rear right side	Sill - dent(s) - Smooth repair work
2	2nd wheel set	1 alloy rim - Scratched - Loss in value

Wear and tear

No.	Component group	Description
1	Body	Body (Steinschläge) - Scratch(es) - No deduction
2	Interior	Interior - Abrasion - No deduction
3	Vehicle glazing	Windscreen (Steinschläge) - No deduction

Missing parts

Missing part

Detected repainting

No.	Location
	None detectable

Main tyres

Axle	Tyre size	Manufacturer	Type of tyre	Tread depth	Roadworthy	Permissibility
1	245/45 R18 100V	Pirelli	summer tires (with run-flat tires)	6mm - 6mm	o.k.	
2	245/45 R18 100V	Pirelli	summer tires (with run-flat tires)	6mm - 6mm	o.k.	

TÜV SÜD Auto Plus GmbH
Gutenbergstr. 13
70771 Leinfelden-Echterdingen

Inspection location
Allane Mobility Consulting
GmbH
69190 Walldorf

Inspection date: 10 Mar 2025
Protocol number: 38775813
Delivery date: 10 Mar 2025



Additional tyres

Axle	Tyre size	Manufacturer	Type of tyre	Tread depth	Roadworthy	Permissibility
1	245/45 R18 100Y	Pirelli	Summer tyres	5mm - 5mm	o.k.	
2	245/45 R18 100Y	Pirelli	Summer tyres	5mm - 5mm	o.k.	

Replacement

Type	Tyre size	Manufacturer	Type of tyre	Tread depth	Expiration date
Tirefit					01/2027

The wear and tear condition and possible damages to the tyres are considered in the value.

Comments

Keine Gewähr auf Vollständigkeit und
Richtigkeit der angezeigten Ausstattung.
Techn. Änderungen vorbehalten
Das Fahrzeug weist dem Alter, der Laufleistung und dem
Einsatzzweck entsprechende Gebrauchsspuren auf.
elektr. Komponenten geprüft, i. O.

Lackwerte geprüft, i. O.

TÜV SÜD Auto Plus GmbH
Gutenbergstr. 13
70771 Leinfelden-Echterdingen

Inspection location
Allane Mobility Consulting
GmbH
69190 Walldorf

Inspection date: 10 Mar 2025
Protocol number: 38775813
Delivery date: 10 Mar 2025



Vehicle details

Manufacturer	BMW	Inspection condition	Sufficient
Type / Model	530d	Mileage (Read)	50,860 km
Vehicle Identification number	WBA11AH080CG56344	First registration	22 Feb 2021

Vehicle identification:

The vehicle identification number (VIN) was read and its conformity with the documents submitted was established during the inspection by the undersigned.

Inspection conditions:

The inspection conditions were sufficient to assess the vehicle. The inspection was carried out using the lighting conditions provided by the photo system included in the report.

General condition:

The vehicle shows traces of wear and tear corresponding to its age and purpose

Overview pictures



Figure 1: Diagonal front



Figure 2: Diagonal front



Figure 3: Diagonal rear



Figure 4: Diagonal rear



Figure 5: Interior



Figure 6: Interior



Figure 7: Interior



Figure 8: Interior



Figure 9: Interior



Figure 10: Misc.



Figure 11: Misc.



Figure 12: Misc.



Figure 13: Misc.



Figure 14: Misc.



Figure 15: Misc.

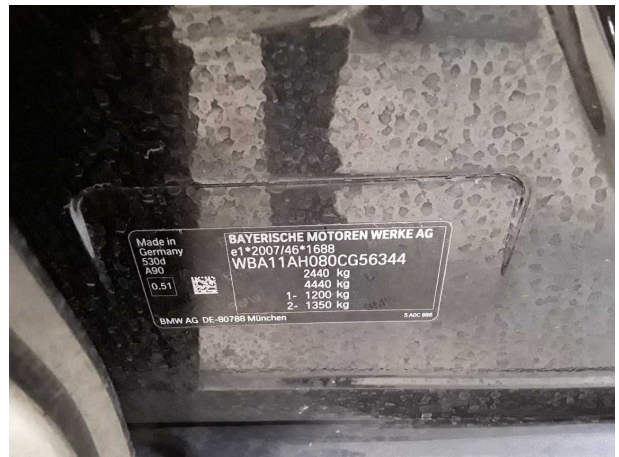


Figure 16: Misc.

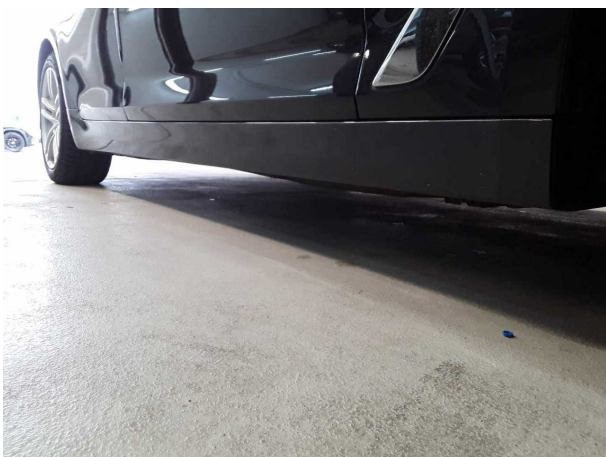


Figure 17: Misc.

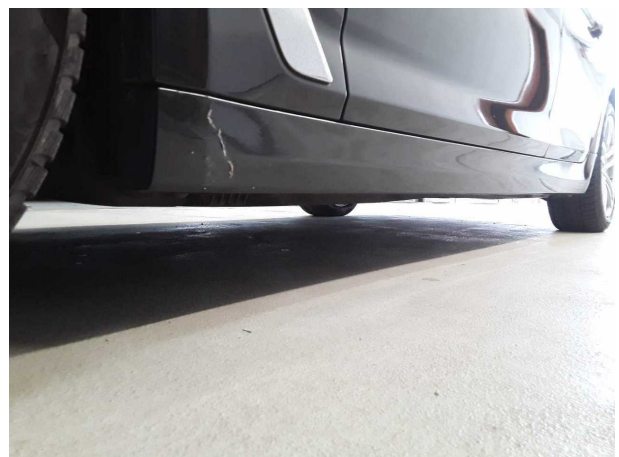


Figure 18: Misc.



Figure 19: Misc.

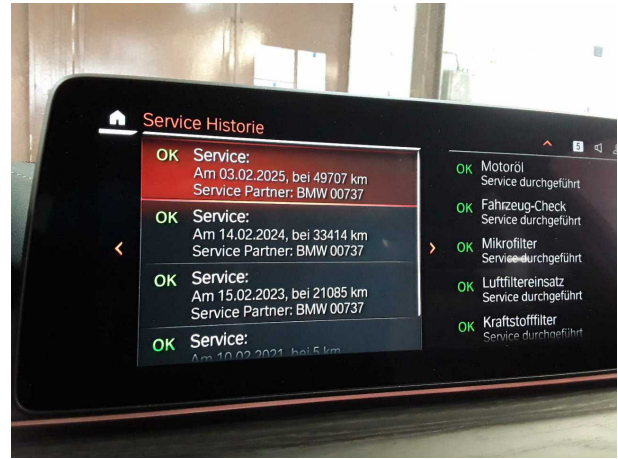


Figure 20: Misc.

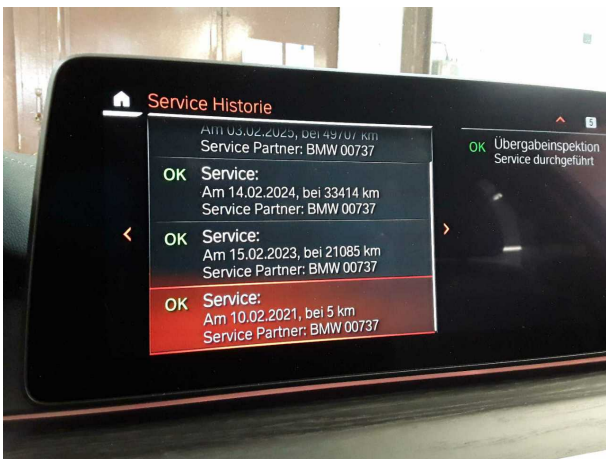


Figure 21: Misc.

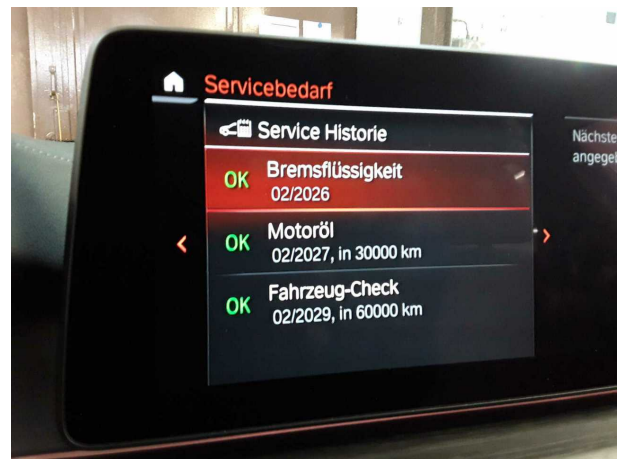


Figure 22: Misc.



Figure 23: Misc.

Pictures of damage



Damage #1: Side panel - rear right side: Sill - dent(s) - Smooth repair work



Damage #1: Side panel - rear right side: Sill - dent(s) - Smooth repair work



Damage #2: 2nd wheel set: 1 alloy rim - Scratched - Loss in value



Damage #2: 2nd wheel set: 1 alloy rim - Scratched - Loss in value