



WBA71AG080WX11401

Vehicle details

Operator		Inspection condition	conditional: light/moisture/dirt
License number		Mileage (Read)	70,308 km
Manufacturer	BMW	Next maintenance in	12 Monat(e)
Type / Model	520i	Main inspection (Report not on hand)	03/2026
Vehicle Identification number	WBA71AG080WX11401	Power / Engine displacement	135 kW / 1,998 ccm
First registration	15 Feb 2021	Upholstery/Colour	/
Last maintenance	09/2024, 61,604 km	Paintwork	
Fuel type	Hybrid Petrol / E	Gearbox	Automatic

Zustandsbericht

Value reducing factors

No.	Component group	Description
1	Wheel / tyres	Alloy rim - front right side - Scratched - No deduction
2	Documents	Main inspection certificate (Fehlt) - Replace
3	Trim / covers	Trim / covers (Sitz vorne rechts unten) - Loose - Replace
4	Front bumper	Front bumper - Scratched - Repair and paint

Wear and tear

No.	Component group	Description
1	Body	Body - Stone chips - No deduction
2	Body	Body - Scratch(es) - No deduction
3	Interior	Interior - Abrasion - No deduction
4	Vehicle glazing	Windscreen - Stone chips - No deduction

Missing parts

Missing part

Previous damages

No.	Previous damage
1	Front, Rear, Side - left, Side right, Provided by user / customer

Detected repainting

No.	Location
1	Mudguard - left side, Mudguard - right side, Sill - right side, Side panel - rear right side, Bumper rear, Bumper front, Door - rear right side, Door - front right side, Professionally carried out

TÜV SÜD Auto Plus GmbH
Gutenbergstr. 13
70771 Leinfelden-Echterdingen

Inspection location
Allane Mobility Consulting
GmbH
69190 Walldorf

Inspection date: 12 Mar 2025
Protocol number: 38840520
Delivery date: 12 Mar 2025



Main tyres

Axle	Tyre size	Manufacturer	Type of tyre	Tread depth	Roadworthy	Permissibility
1	225/55 R17 97H	Pirelli	Winter tyres	6mm - 6mm	o.k.	
2	225/55 R17 97H	Pirelli	Winter tyres	5mm - 5mm	o.k.	

Additional tyres

Axle	Tyre size	Manufacturer	Type of tyre	Tread depth	Roadworthy	Permissibility
1	225/55 R17 101Y	Continental	Summer tyres	6mm - 6mm	o.k.	
2	225/55 R17 101Y	Michelin	Summer tyres	7mm - 7mm	o.k.	

The wear and tear condition and possible damages to the tyres are considered in the value.

Comments

Keine Gewähr auf Vollständigkeit und
Richtigkeit der angezeigten Ausstattung.
Techn. Änderungen vorbehalten
Das Fahrzeug weist dem Alter, der Laufleistung und dem
Einsatzzweck entsprechende Gebrauchsspuren auf.
elektr. Komponenten geprüft, i. O.

Lackwerte geprüft, n. i. O.

Fahrzeug war zum Zeitpunkt der Besichtigung regennass, weitere Beschädigungen können nicht ausgeschlossen werden.

TÜV SÜD Auto Plus GmbH
Gutenbergstr. 13
70771 Leinfelden-Echterdingen

Inspection location
Allane Mobility Consulting
GmbH
69190 Walldorf

Inspection date: 12 Mar 2025
Protocol number: 38840520
Delivery date: 12 Mar 2025



Vehicle details

Manufacturer	BMW	Inspection condition	conditional: light/moisture/dirt
Type / Model	520i	Mileage (Read)	70,308 km
Vehicle Identification number	WBA71AG080WX11401	First registration	15 Feb 2021

Vehicle identification:

The vehicle identification number (VIN) was read and its conformity with the documents submitted was established during the inspection by the undersigned.

Inspection conditions:

A proper visual inspection of the paintwork and the bodywork was only possible to a limited extent due to insufficient lighting conditions/wetness or dirt. At the time of the inspection, the condition could not be ensured for an adequate assessment. The expert therefore recommends a further inspection to reduce the prognosis risk.

General condition:

The vehicle shows traces of wear and tear corresponding to its age and purpose

Overview pictures



Figure 1: Diagonal front



Figure 2: Diagonal front



Figure 3: Diagonal rear



Figure 4: Diagonal rear



Figure 5: Interior

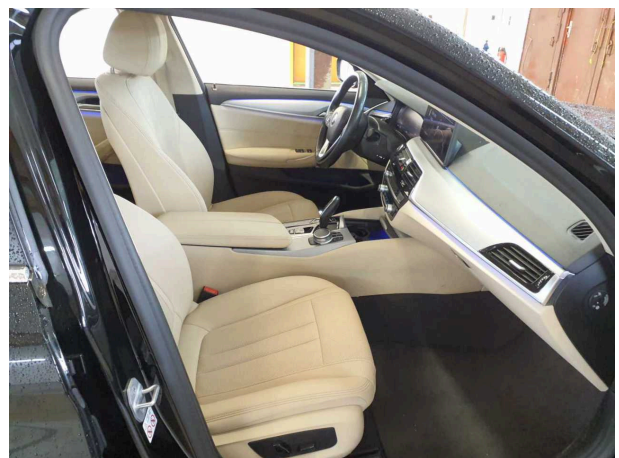


Figure 6: Interior



Figure 7: Interior

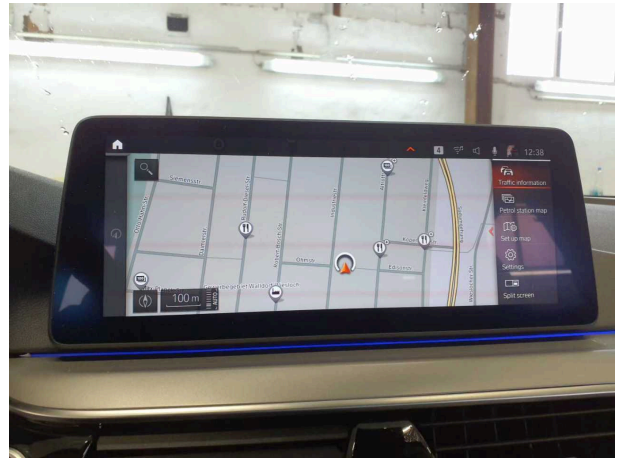


Figure 8: Interior



Figure 9: Interior



Figure 10: Misc.

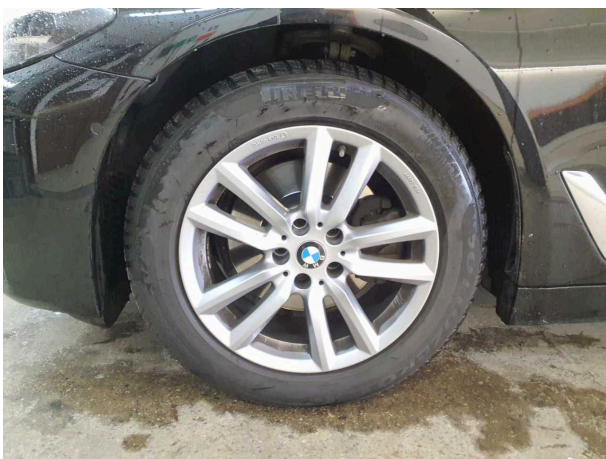


Figure 11: Misc.

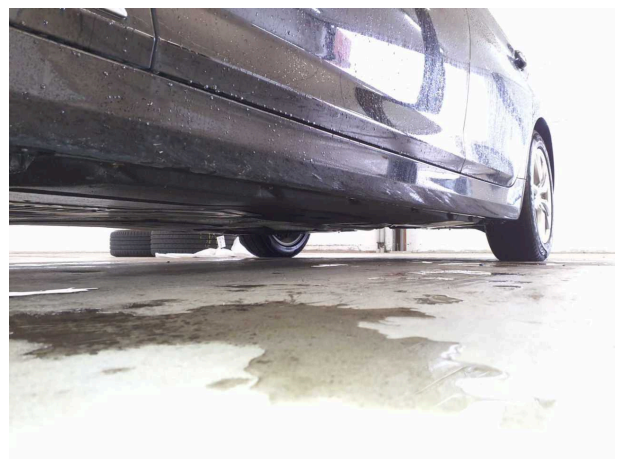


Figure 12: Misc.



Figure 13: Misc.



Figure 14: Misc.

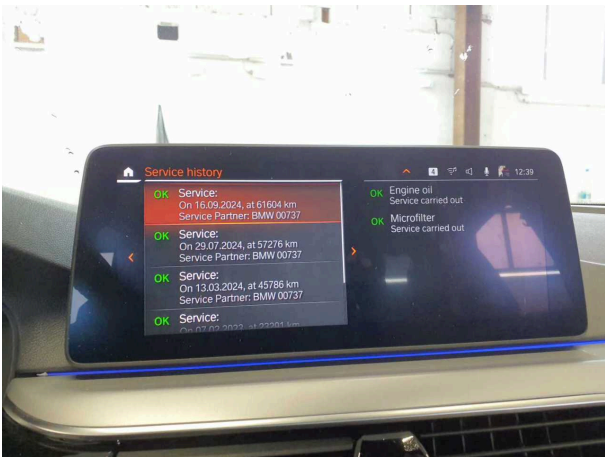


Figure 15: Misc.

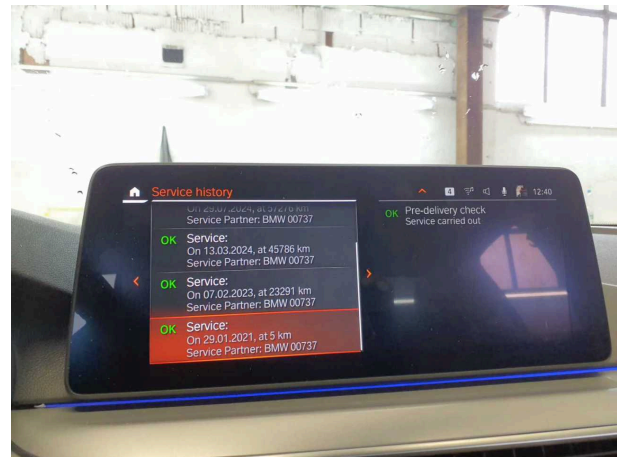


Figure 16: Misc.



Figure 17: Misc.



Figure 18: Misc.



Figure 19: Misc.



Figure 20: Misc.

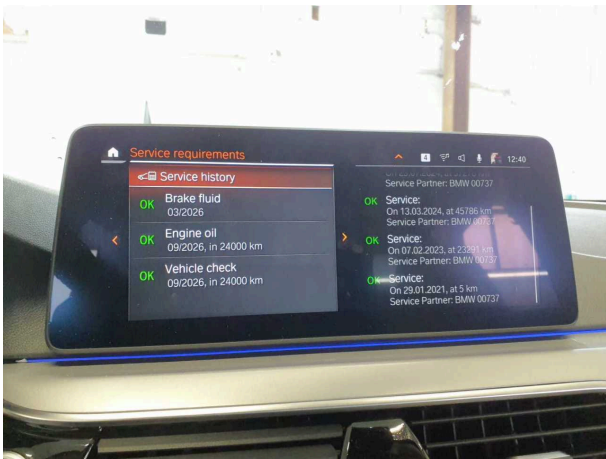


Figure 21: Misc.

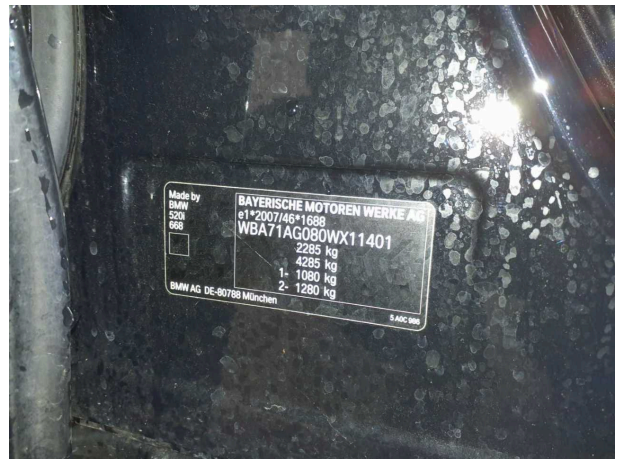


Figure 22: Misc.



Figure 23: Misc.

Pictures of damage



Damage #1: Wheel / tyres: Alloy rim - front right side - Scratched - No deduction



Damage #1: Wheel / tyres: Alloy rim - front right side - Scratched - No deduction



Damage #3: Trim / covers: Trim / covers (Sitz vorne rechts unten) - Loose - Replace



Damage #3: Trim / covers: Trim / covers (Sitz vorne rechts unten) - Loose - Replace



Damage #4: Front bumper: Front bumper - Scratched - Repair and paint



Damage #4: Front bumper: Front bumper - Scratched - Repair and paint