

WBY41AW040FR75740

Vehicle details

Operator		Inspection condition	conditional: light/moisture/dirt
License number		Mileage (Read)	37,835 km
Manufacturer	BMW	Next maintenance in	6 Monat(e)
Type / Model	i4 eDrive35	Main inspection (Read from ZBI)	10/2026
Vehicle Identification number	WBY41AW040FR75740	Power / Engine displacement	80 kW
First registration	5 Oct 2023	Upholstery/Colour	/
Last maintenance		Paintwork	
Fuel type	Electric	Gearbox	Automatic

Zustandsbericht

Value reducing factors

No.	Component group	Description
1	Wheel / tyres	Alloy rim - front left side - Scratched - No deduction
2	Wheel / tyres	Alloy rim - rear left side - Scratched - No deduction
3	Side panel - rear right side	Side panel - Dent / paintcoat damage - Smart repair
4	Front bumper	Front bumper - Deformed - Replace

Wear and tear

No.	Component group	Description
1	Interior	Interior - Abrasion - No deduction
2	Body	Body (Steinschläge) - Scratch(es) - No deduction
3	Vehicle glazing	Windscreen - Stone chips - No deduction

Missing parts

Missing part

Detected repainting

No.	Location
None detectable	

Main tyres

Axle	Tyre size	Manufacturer	Type of tyre	Tread depth	Roadworthy	Permissibility
1	245/45 R18 100V	Goodyear	Winter tyres	6mm - 6mm	o.k.	
2	245/45 R18 100V	Goodyear	Winter tyres	5mm - 5mm	o.k.	

TÜV SÜD Auto Plus GmbH
Gutenbergstr. 13
70771 Leinfelden-Echterdingen

Inspection location
Allane Mobility Consulting
GmbH

69190 Walldorf

Inspection date: 13 Mar 2025

Protocol number: 38837588

Delivery date: 13 Mar 2025



Auto Plus

Additional tyres

Axle	Tyre size	Manufacturer	Type of tyre	Tread depth	Roadworthy	Permissibility
1	245/45 R18 100Y	Hankook	Summer tyres	5mm - 5mm	o.k.	
2	255/45 R18 103Y	Hankook	Summer tyres	4mm - 4mm	o.k.	

The wear and tear condition and possible damages to the tyres are considered in the value.

Comments

Keine Gewähr auf Vollständigkeit und
Richtigkeit der angezeigten Ausstattung.
Techn. Änderungen vorbehalten
Das Fahrzeug weist dem Alter, der Laufleistung und dem
Einsatzzweck entsprechende Gebrauchsspuren auf.
elektr. Komponenten geprüft, i. O.

Lackwerte geprüft, i. O.

Fahrzeug war zum Zeitpunkt der Besichtigung taunass, weitere Beschädigungen können nicht ausgeschlossen werden

TÜV SÜD Auto Plus GmbH
Gutenbergstr. 13
70771 Leinfelden-Echterdingen

Inspection location
Allane Mobility Consulting
GmbH
69190 Walldorf

Inspection date: 13 Mar 2025
Protocol number: 38837588
Delivery date: 13 Mar 2025



Vehicle details

Manufacturer	BMW	Inspection condition	conditional: light/moisture/dirt
Type / Model	i4 eDrive35	Mileage (Read)	37,835 km
Vehicle Identification number	WBY41AW040FR75740	First registration	5 Oct 2023

Vehicle identification:

The vehicle identification number (VIN) was read and its conformity with the documents submitted was established during the inspection by the undersigned.

Inspection conditions:

A proper visual inspection of the paintwork and the bodywork was only possible to a limited extent due to insufficient lighting conditions/wetness or dirt. At the time of the inspection, the condition could not be ensured for an adequate assessment. The expert therefore recommends a further inspection to reduce the prognosis risk.

General condition:

The vehicle shows traces of wear and tear corresponding to its age and purpose

Overview pictures



Figure 1: Diagonal front



Figure 2: Diagonal front



Figure 3: Diagonal rear



Figure 4: Diagonal rear



Figure 5: Interior



Figure 6: Interior



Figure 7: Interior



Figure 8: Interior

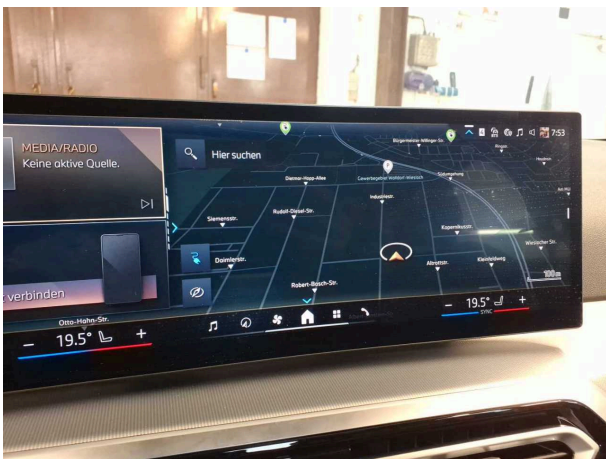


Figure 9: Interior

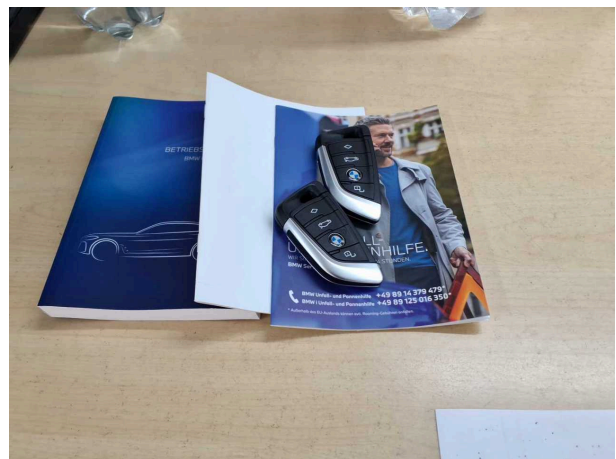


Figure 10: Misc.



Figure 11: Misc.



Figure 12: Misc.



Figure 13: Misc.



Figure 14: Misc.



Figure 15: Misc.

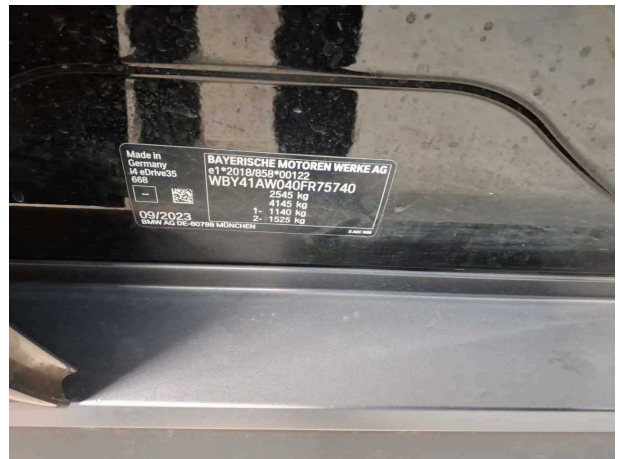


Figure 16: Misc.

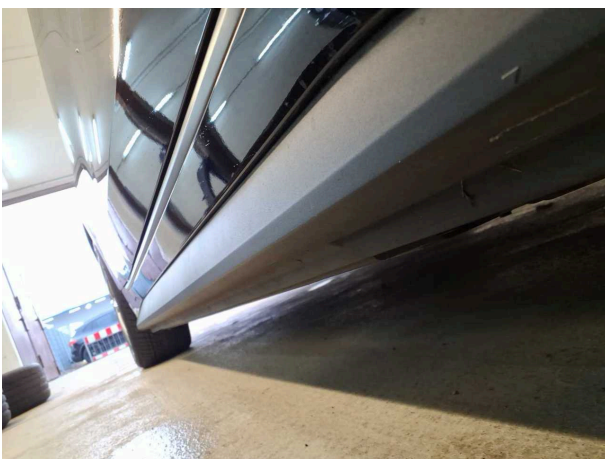


Figure 17: Misc.



Figure 18: Misc.

TÜV SÜD Auto Plus GmbH
Gutenbergstr. 13
70771 Leinfelden-Echterdingen

Inspection location
Allane Mobility Consulting
GmbH

69190 Walldorf

Inspection date: 13 Mar 2025
Protocol number: 38837588
Delivery date: 13 Mar 2025



Auto Plus



Figure 19: Misc.

Pictures of damage



Damage #1: Wheel / tyres: Alloy rim - front left side - Scratched - No deduction



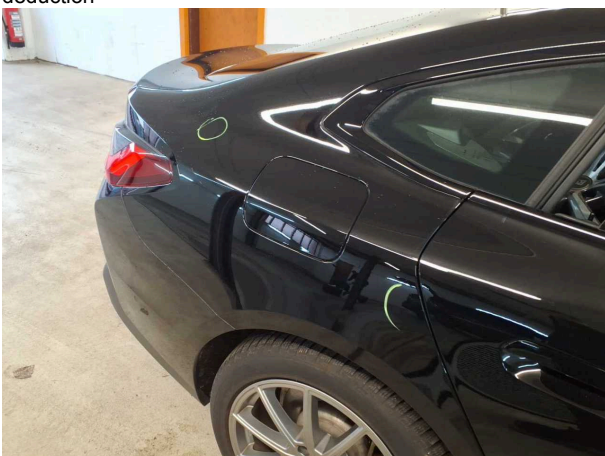
Damage #1: Wheel / tyres: Alloy rim - front left side - Scratched - No deduction



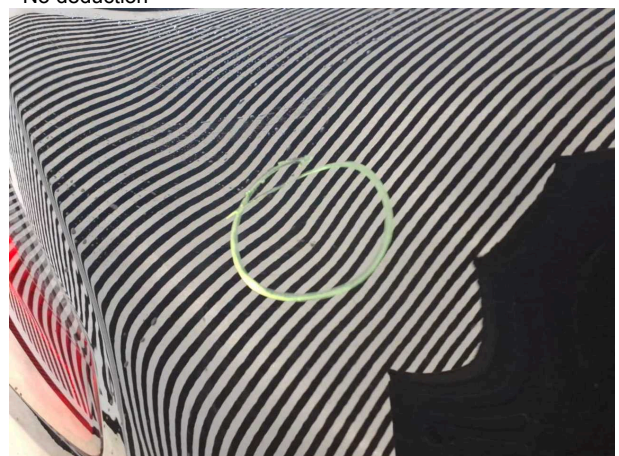
Damage #2: Wheel / tyres: Alloy rim - rear left side - Scratched - No deduction



Damage #2: Wheel / tyres: Alloy rim - rear left side - Scratched - No deduction



Damage #3: Side panel - rear right side: Side panel - Dent / paintcoat damage - Smart repair



Damage #3: Side panel - rear right side: Side panel - Dent / paintcoat damage - Smart repair

TÜV SÜD Auto Plus GmbH
Gutenbergstr. 13
70771 Leinfelden-Echterdingen

Inspection location
Allane Mobility Consulting
GmbH

69190 Walldorf

Inspection date: 13 Mar 2025
Protocol number: 38837588
Delivery date: 13 Mar 2025



Auto Plus



Damage #3: Side panel - rear right side: Side panel - Dent / paintcoat damage - Smart repair



Damage #4: Front bumper: Front bumper - Deformed - Replace



Damage #4: Front bumper: Front bumper - Deformed - Replace