



**WBA11CG030CG62713**

## Vehicle details

Operator		Inspection condition	Sufficient
License number		Mileage (Read)	107,360 km
Manufacturer	BMW	Next maintenance in	24,000 km
Type / Model	530e	Main inspection (Report not on hand)	03/2026
Vehicle Identification number	WBA11CG030CG62713	Power / Engine displacement	135 kW / 1,998 ccm
First registration	2 Mar 2021	Upholstery/Colour	/
Last maintenance	09/2024, 98,011 km	Paintwork	
Fuel type	Hybr.B/E ext. edition	Gearbox	Automatic

## Zustandsbericht

### Value reducing factors

No.	Component group	Description
1	Wheel / tyres	Alloy rim - rear right side - Scratched - No deduction
2	Wheel / tyres	Alloy rim - front right side - Scratched - No deduction
3	Mudguard - left side	Mudguard - left side - Scratch(es) - Cover / polish
4	Mudguard - right side	Mudguard - right side - Scratch(es) - Cover / polish
5	Documents	Main inspection certificate (Fehlt) - Replace
6	Front bumper	Cover bumper - front - Scratched - Replace
7	2nd wheel set	1 tyre - Damaged - Replace
8	2nd wheel set	2 alloy rims - Scratched - Loss in value
9	Tail light	Tail light (LED) - left side (Undicht) - Replace
10	Front bumper	Front bumper - Scratched - Repair and paint

### Wear and tear

No.	Component group	Description
1	Body	Body - Stone chips - No deduction
2	Vehicle glazing	Windscreen - Stone chips - No deduction
3	Interior	Interior - Abrasion - No deduction
4	Body	Body - Scratch(es) - No deduction

### Missing parts

Missing part

### Previous damages

No.	Previous damage
1	Front, Rear, Side right, Provided by user / customer



## Detected repainting

No.	Location
1	Mudguard - right side, Side panel - rear right side, Bumper rear, Bumper front, Door - rear right side, Door - front right side, Professionally carried out

## Main tyres

Axle	Tyre size	Manufacturer	Type of tyre	Tread depth	Roadworthy	Permissibility
1	245/45 R18 100V	Pirelli	Winter tyres	5mm - 5mm	o.k.	
2	245/45 R18 100V	Pirelli	Winter tyres	5mm - 5mm	o.k.	

## Additional tyres

Axle	Tyre size	Manufacturer	Type of tyre	Tread depth	Roadworthy	Permissibility
1	245/45 R18 100Y	Bridgestone	Summer tyres	6mm - 6mm	o.k.	
2	245/45 R18 100Y	Bridgestone	Summer tyres	6mm - 6mm	Not o.k.	

The wear and tear condition and possible damages to the tyres are considered in the value.

## Comments

Keine Gewähr auf Vollständigkeit und Richtigkeit der angezeigten Ausstattung.  
Techn. Änderungen vorbehalten  
Das Fahrzeug weist dem Alter, der Laufleistung und dem Einsatzzweck entsprechende Gebrauchsspuren auf.  
elektr. Komponenten geprüft, i. O.

Lackwerte geprüft, n. i. O.

**TÜV SÜD Auto Plus GmbH**  
Gutenbergstr. 13  
70771 Leinfelden-Echterdingen

**Inspection location**  
Allane Mobility Consulting  
GmbH  
69190 Walldorf

Inspection date: 10 Mar 2025  
**Protocol number: 38775008**  
Delivery date: 10 Mar 2025



---

## Vehicle details

<b>Manufacturer</b>	BMW	<b>Inspection condition</b>	Sufficient
<b>Type / Model</b>	530e	<b>Mileage (Read)</b>	107,360 km
<b>Vehicle Identification number</b>	WBA11CG030CG62713	<b>First registration</b>	2 Mar 2021

**Vehicle identification:**

The vehicle identification number (VIN) was read and its conformity with the documents submitted was established during the inspection by the undersigned.

**Inspection conditions:**

The inspection conditions were sufficient to assess the vehicle. The inspection was carried out using the lighting conditions provided by the photo system included in the report.

**General condition:**

The vehicle shows traces of wear and tear corresponding to its age and purpose

## Overview pictures



**Figure 1:** Diagonal front



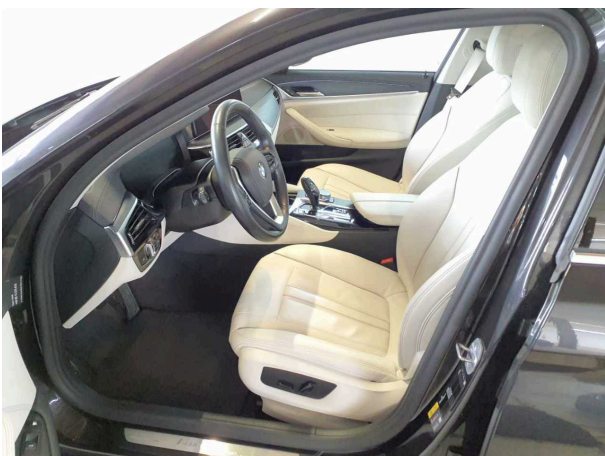
**Figure 2:** Diagonal front



**Figure 3:** Diagonal rear



**Figure 4:** Diagonal rear



**Figure 5:** Interior



**Figure 6:** Interior





Figure 7: Interior



Figure 8: Interior



Figure 9: Interior



Figure 10: Misc.

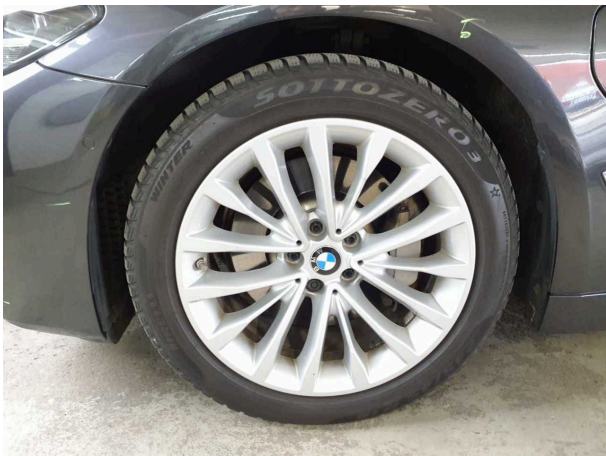


Figure 11: Misc.



Figure 12: Misc.



Figure 13: Misc.



Figure 14: Misc.

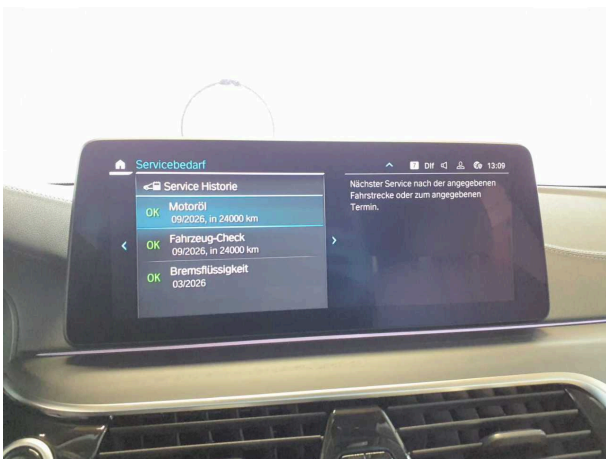


Figure 15: Misc.

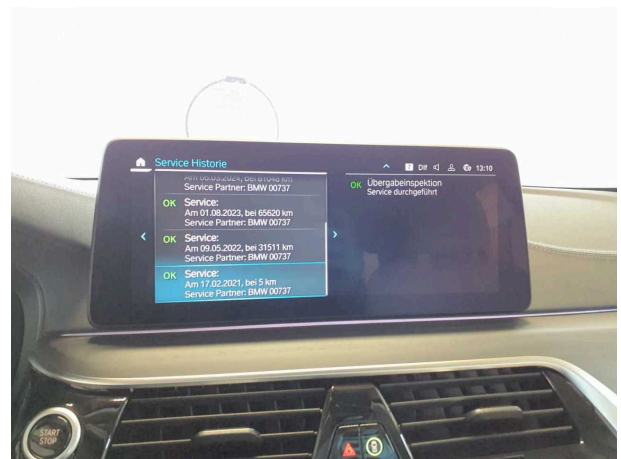


Figure 16: Misc.



Figure 17: Misc.

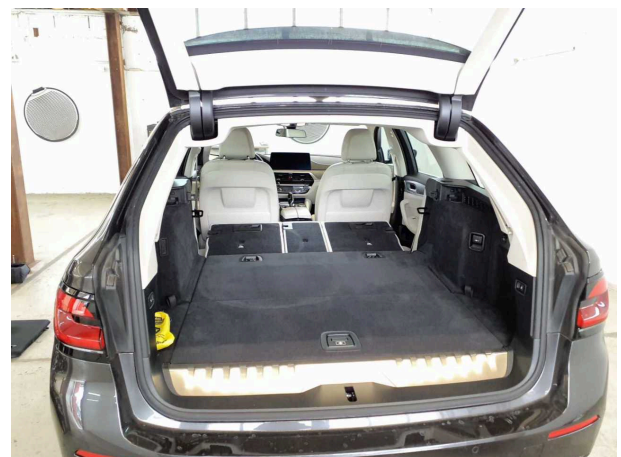


Figure 18: Misc.





Figure 19: Misc.



Figure 20: Misc.

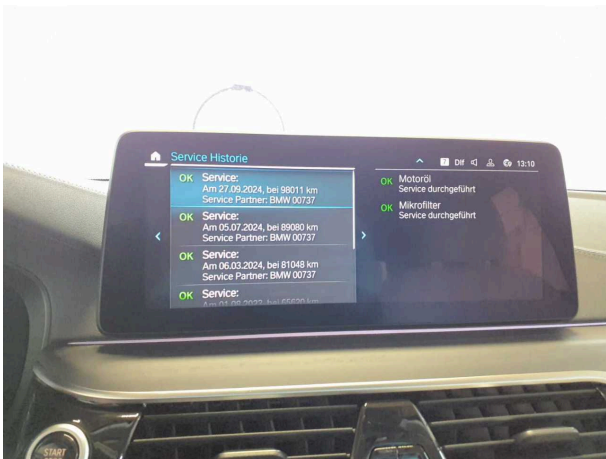


Figure 21: Misc.

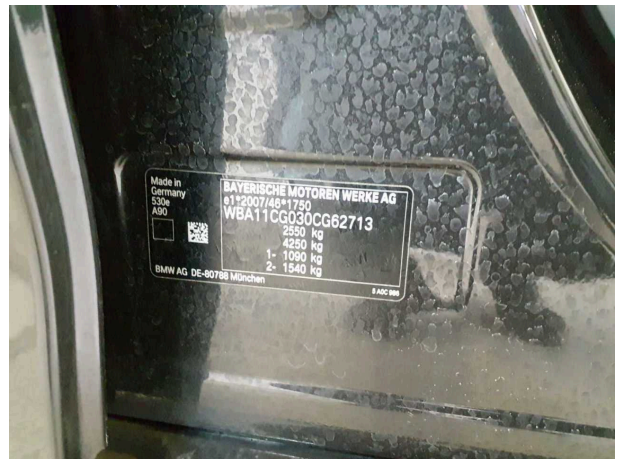


Figure 22: Misc.



Figure 23: Misc.



## Pictures of damage



**Damage #1:** Wheel / tyres: Alloy rim - rear right side - Scratched - No deduction



**Damage #1:** Wheel / tyres: Alloy rim - rear right side - Scratched - No deduction



**Damage #2:** Wheel / tyres: Alloy rim - front right side - Scratched - No deduction



**Damage #2:** Wheel / tyres: Alloy rim - front right side - Scratched - No deduction



**Damage #3:** Mudguard - left side: Mudguard - left side - Scratch(es) - Cover / polish



**Damage #3:** Mudguard - left side: Mudguard - left side - Scratch(es) - Cover / polish





Damage #4: Mudguard - right side: Mudguard - right side -  
Scratch(es) - Cover / polish



Damage #4: Mudguard - right side: Mudguard - right side -  
Scratch(es) - Cover / polish



Damage #6: Front bumper: Cover bumper - front - Scratched -  
Replace



Damage #6: Front bumper: Cover bumper - front - Scratched -  
Replace



Damage #7: 2nd wheel set: 1 tyre - Damaged - Replace



Damage #7: 2nd wheel set: 1 tyre - Damaged - Replace





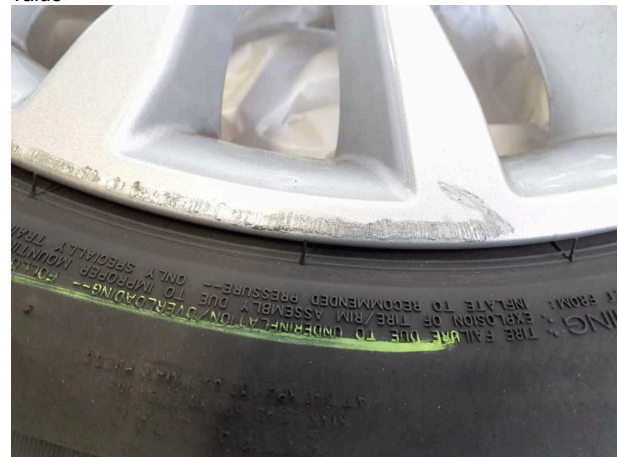
Damage #8: 2nd wheel set: 2 alloy rims - Scratched - Loss in value



Damage #8: 2nd wheel set: 2 alloy rims - Scratched - Loss in value



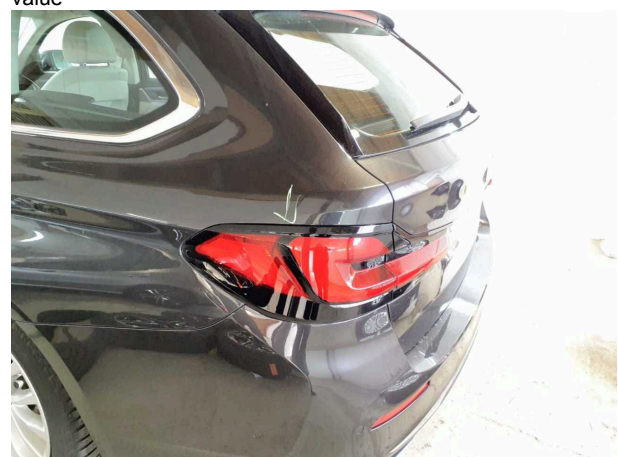
Damage #8: 2nd wheel set: 2 alloy rims - Scratched - Loss in value



Damage #8: 2nd wheel set: 2 alloy rims - Scratched - Loss in value



Damage #8: 2nd wheel set: 2 alloy rims - Scratched - Loss in value



Damage #9: Tail light: Tail light (LED) - left side (Undicht) - Replace





Damage #9: Tail light: Tail light (LED) - left side (Undicht) - Replace



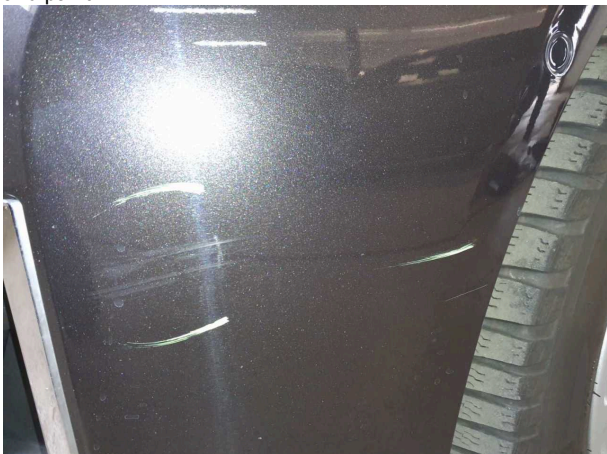
Damage #9: Tail light: Tail light (LED) - left side (Undicht) - Replace



Damage #10: Front bumper: Front bumper - Scratched - Repair and paint



Damage #10: Front bumper: Front bumper - Scratched - Rep... and paint



Damage #10: Front bumper: Front bumper - Scratched - Repair and paint



Damage #10: Front bumper: Front bumper - Scratched - Rep... and paint

**TÜV SÜD Auto Plus GmbH**  
Gutenbergstr. 13  
70771 Leinfelden-Echterdingen

**Inspection location**  
Allane Mobility Consulting  
GmbH

69190 Walldorf

Inspection date: 10 Mar 2025  
**Protocol number: 38775008**  
Delivery date: 10 Mar 2025



Auto Plus



**Damage #10:** Front bumper: Front bumper - Scratched - Repair and paint