



**WBA5X71090FJ95146**

## Vehicle details

<b>Operator</b>		<b>Inspection condition</b>	conditional: light/moisture/dirt
<b>License number</b>		<b>Mileage (Read)</b>	57,131 km
<b>Manufacturer</b>	BMW	<b>Next maintenance in</b>	3 Monat(e)
<b>Type / Model</b>	330e	<b>Main inspection (Report not on hand)</b>	06/2025
<b>Vehicle Identification number</b>	WBA5X71090FJ95146	<b>Power / Engine displacement</b>	135 kW / 1,998 ccm
<b>First registration</b>	23 Jun 2020	<b>Upholstery/Colour</b>	/
<b>Last maintenance</b>	07/2024, 46,397 km	<b>Paintwork</b>	
<b>Fuel type</b>	Hybr.B/E ext. edition	<b>Gearbox</b>	Automatic

## Zustandsbericht

### Value reducing factors

No.	Component group	Description
1	Wheel / tyres	Alloy rim - rear right side - Scratched - No deduction
2	Wheel / tyres	Alloy rim - rear left side - Scratched - No deduction
3	Documents	Main inspection certificate (Fehlt) - Replace
4	2nd wheel set	1 alloy rim - Scratched - Loss in value

### Wear and tear

No.	Component group	Description
1	Vehicle glazing	Windscreen (Steinschläge) - No deduction
2	Body	Body (Steinschläge) - Scratch(es) - No deduction

### Missing parts

Missing part
--------------

### Previous damages

No.	Previous damage
1	Front, Provided by user / customer

### Detected repainting

No.	Location
	None detectable

**TÜV SÜD Auto Plus GmbH**  
Gutenbergstr. 13  
70771 Leinfelden-Echterdingen

**Inspection location**  
Allane Mobility Consulting  
GmbH  
69190 Walldorf

Inspection date: 11 Mar 2025  
**Protocol number: 38791818**  
Delivery date: 11 Mar 2025



## Main tyres

Axle	Tyre size	Manufacturer	Type of tyre	Tread depth	Roadworthy	Permissibility
1	225/50 R17 98H	Goodyear	Winter tyres	6mm - 6mm	o.k.	
2	225/50 R17 94H	Pirelli	Winter tyres	6mm - 6mm	o.k.	

## Additional tyres

Axle	Tyre size	Manufacturer	Type of tyre	Tread depth	Roadworthy	Permissibility
1	225/45 R18 95Y	Goodyear	Summer tyres	6mm - 6mm	o.k.	
2	255/40 R18 99Y	Goodyear	Summer tyres	4mm - 4mm	o.k.	

The wear and tear condition and possible damages to the tyres are considered in the value.

## Comments

Keine Gewähr auf Vollständigkeit und  
Richtigkeit der angezeigten Ausstattung.  
Techn. Änderungen vorbehalten  
Das Fahrzeug weist dem Alter, der Laufleistung und dem  
Einsatzzweck entsprechende Gebrauchsspuren auf.  
elektr. Komponenten geprüft, i. O.

Lackwerte geprüft, i. O.

Fahrzeug war zum Zeitpunkt der Besichtigung verschmutzt, weitere Beschädigungen können nicht ausgeschlossen werden.

**TÜV SÜD Auto Plus GmbH**  
Gutenbergstr. 13  
70771 Leinfelden-Echterdingen

**Inspection location**  
Allane Mobility Consulting  
GmbH  
69190 Walldorf

Inspection date: 11 Mar 2025  
**Protocol number: 38791818**  
Delivery date: 11 Mar 2025



---

## Vehicle details

<b>Manufacturer</b>	BMW	<b>Inspection condition</b>	conditional: light/moisture/dirt
<b>Type / Model</b>	330e	<b>Mileage (Read)</b>	57,131 km
<b>Vehicle Identification number</b>	WBA5X71090FJ95146	<b>First registration</b>	23 Jun 2020

### Vehicle identification:

The vehicle identification number (VIN) was read and its conformity with the documents submitted was established during the inspection by the undersigned.

### Inspection conditions:

A proper visual inspection of the paintwork and the bodywork was only possible to a limited extent due to insufficient lighting conditions/wetness or dirt. At the time of the inspection, the condition could not be ensured for an adequate assessment. The expert therefore recommends a further inspection to reduce the prognosis risk.

### General condition:

The vehicle shows traces of wear and tear corresponding to its age and purpose

## Overview pictures



Figure 1: Diagonal front



Figure 2: Diagonal front



Figure 3: Diagonal rear



Figure 4: Diagonal rear



Figure 5: Interior

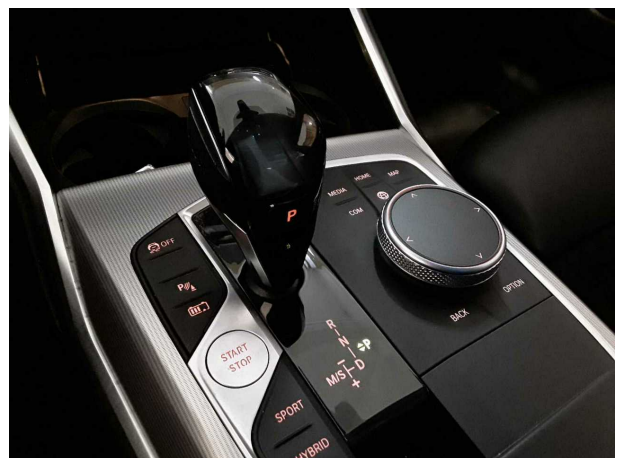


Figure 6: Interior

TÜV SÜD Auto Plus GmbH  
Gutenbergstr. 13  
70771 Leinfelden-Echterdingen

Inspection location  
Allane Mobility Consulting  
GmbH

69190 Walldorf

Inspection date: 11 Mar 2025  
Protocol number: 38791818  
Delivery date: 11 Mar 2025



Figure 7: Interior



Figure 8: Interior



Figure 9: Interior



Figure 10: Misc.



Figure 11: Misc.



Figure 12: Misc.



Figure 13: Misc.



Figure 14: Misc.

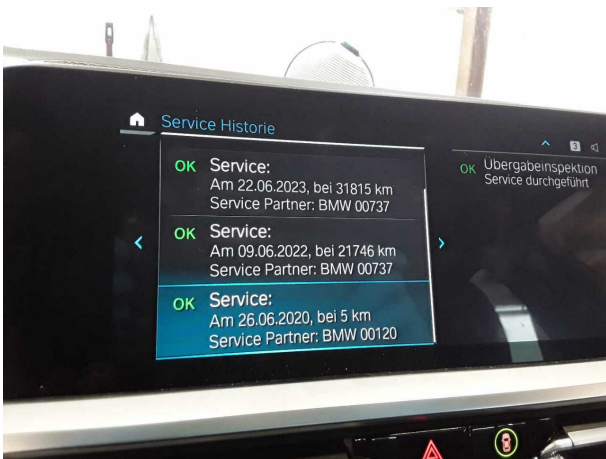


Figure 15: Misc.



Figure 16: Misc.

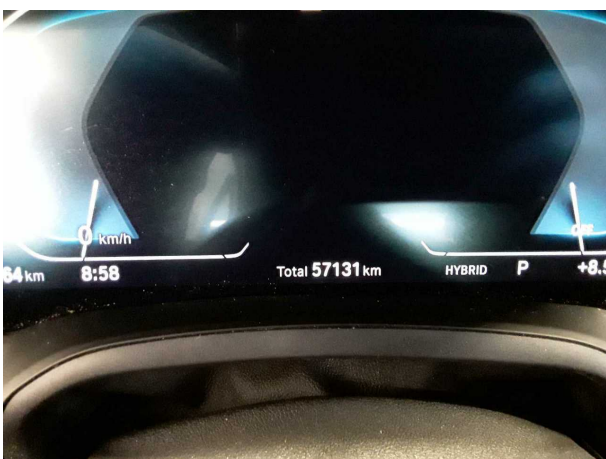


Figure 17: Misc.



Figure 18: Misc.



Figure 19: Misc.



Figure 20: Misc.

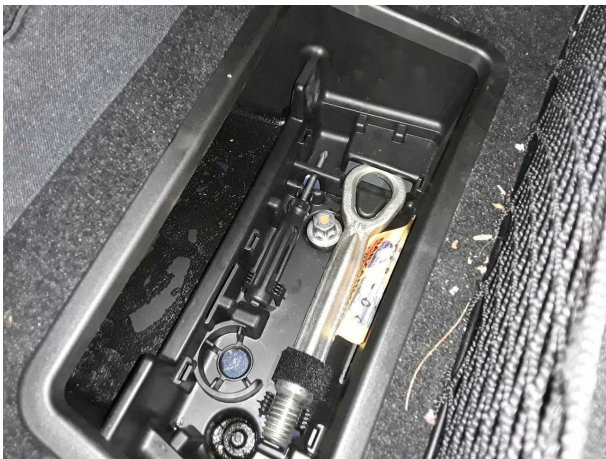


Figure 21: Misc.

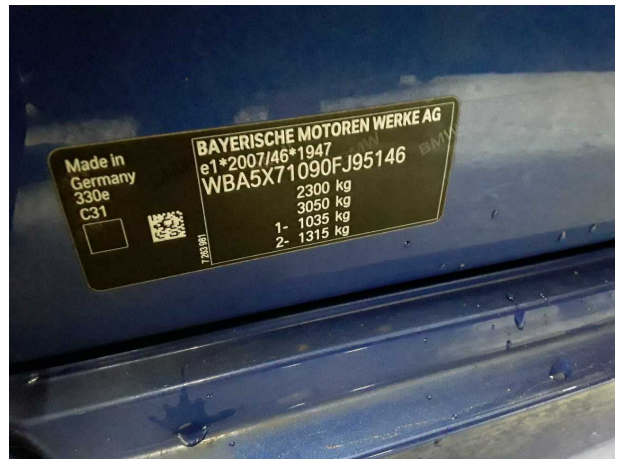


Figure 22: Misc.



Figure 23: Misc.

## Pictures of damage



**Damage #1:** Wheel / tyres: Alloy rim - rear right side - Scratched - No deduction



**Damage #1:** Wheel / tyres: Alloy rim - rear right side - Scratched - No deduction



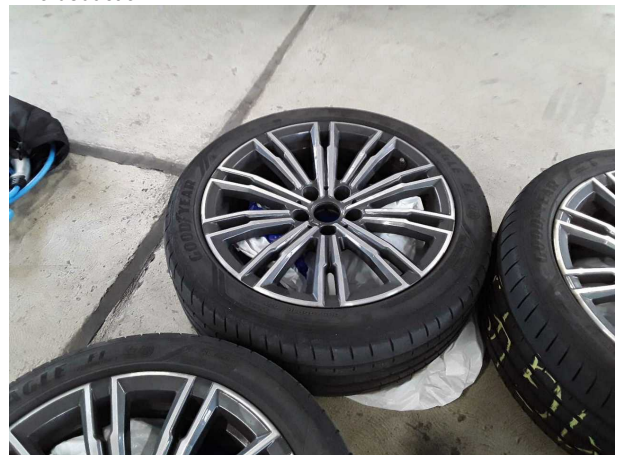
**Damage #1:** Wheel / tyres: Alloy rim - rear right side - Scratched - No deduction



**Damage #2:** Wheel / tyres: Alloy rim - rear left side - Scratched - No deduction



**Damage #2:** Wheel / tyres: Alloy rim - rear left side - Scratched - ... deduction



**Damage #4:** 2nd wheel set: 1 alloy rim - Scratched - Loss in value



**TÜV SÜD Auto Plus GmbH**  
Gutenbergstr. 13  
70771 Leinfelden-Echterdingen

**Inspection location**  
Allane Mobility Consulting  
GmbH

69190 Walldorf

Inspection date: 11 Mar 2025

**Protocol number: 38791818**

Delivery date: 11 Mar 2025



Auto Plus



**Damage #4:** 2nd wheel set: 1 alloy rim - Scratched - Loss in value