

**WBA35BG080N080647**

## Vehicle details

Operator		Inspection condition	conditional: light/moisture/dirt
License number		Mileage (Read)	156,861 km
Manufacturer	BMW	Next maintenance in	19,000 km
Type / Model	X3 xDrive20d	Main inspection (Report on hand)	03/2026
Vehicle Identification number	WBA35BG080N080647	Power / Engine displacement	140 kW / 1,995 ccm
First registration	10 Mar 2021	Upholstery/Colour	/
Last maintenance	12/2024, 150,110 km	Paintwork	
Fuel type	Hybrid Diesel / E	Gearbox	Automatic

## Zustandsbericht

### Value reducing factors

No.	Component group	Description
1	Door - front right side	Door - Scratch(es) - Cover / polish
2	Bonnet	Insulation lining - Damage caused by marten / rodent - Replace
3	Trim / covers	Door trim - rear right side - Scratched - Loss in value

### Wear and tear

No.	Component group	Description
1	Interior	Interior - Abrasion - No deduction
2	Body	Body (Steinschläge) - Scratch(es) - No deduction
3	Vehicle glazing	Windscreen - Stone chips - No deduction

### Missing parts

Missing part

### Detected repainting

No.	Location
None detectable	

### Main tyres

Axle	Tyre size	Manufacturer	Type of tyre	Tread depth	Roadworthy	Permissibility
1	225/60 R18 104H	Pirelli	Winter tyres	7mm - 7mm	o.k.	
2	225/60 R18 104H	Pirelli	Winter tyres	7mm - 7mm	o.k.	

**TÜV SÜD Auto Plus GmbH**  
Gutenbergstr. 13  
70771 Leinfelden-Echterdingen

**Inspection location**  
Allane Mobility Consulting  
GmbH

69190 Walldorf

Inspection date: 12 Mar 2025

**Protocol number:** 38801337

Delivery date: 12 Mar 2025



Auto Plus

## Additional tyres

Axle	Tyre size	Manufacturer	Type of tyre	Tread depth	Roadworthy	Permissibility
1	225/60 R18 104W	Pirelli	Summer tyres	5mm - 5mm	o.k.	
2	225/60 R18 104W	Pirelli	Summer tyres	4mm - 4mm	o.k.	

The wear and tear condition and possible damages to the tyres are considered in the value.

## Comments

Keine Gewähr auf Vollständigkeit und  
Richtigkeit der angezeigten Ausstattung.  
Techn. Änderungen vorbehalten  
Das Fahrzeug weist dem Alter, der Laufleistung und dem  
Einsatzzweck entsprechende Gebrauchsspuren auf.  
elektr. Komponenten geprüft, i. O.

Lackwerte geprüft, i. O.

Fahrzeug war zum Zeitpunkt der Besichtigung regennass, weitere Beschädigungen können nicht ausgeschlossen werden

**TÜV SÜD Auto Plus GmbH**  
Gutenbergstr. 13  
70771 Leinfelden-Echterdingen

**Inspection location**  
Allane Mobility Consulting  
GmbH  
69190 Walldorf

Inspection date: 12 Mar 2025  
**Protocol number: 38801337**  
Delivery date: 12 Mar 2025



---

## Vehicle details

<b>Manufacturer</b>	BMW	<b>Inspection condition</b>	conditional: light/moisture/dirt
<b>Type / Model</b>	X3 xDrive20d	<b>Mileage (Read)</b>	156,861 km
<b>Vehicle Identification number</b>	WBA35BG080N080647	<b>First registration</b>	10 Mar 2021

**Vehicle identification:**

The vehicle identification number (VIN) was read and its conformity with the documents submitted was established during the inspection by the undersigned.

**Inspection conditions:**

A proper visual inspection of the paintwork and the bodywork was only possible to a limited extent due to insufficient lighting conditions/wetness or dirt. At the time of the inspection, the condition could not be ensured for an adequate assessment. The expert therefore recommends a further inspection to reduce the prognosis risk.

**General condition:**

The vehicle shows traces of wear and tear corresponding to its age and purpose

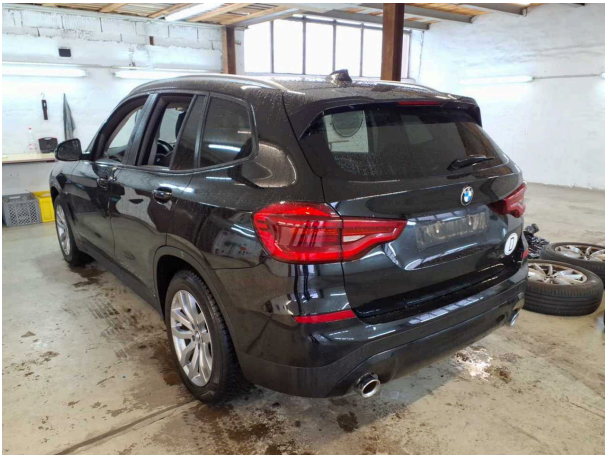
## Overview pictures



**Figure 1:** Diagonal front



**Figure 2:** Diagonal front



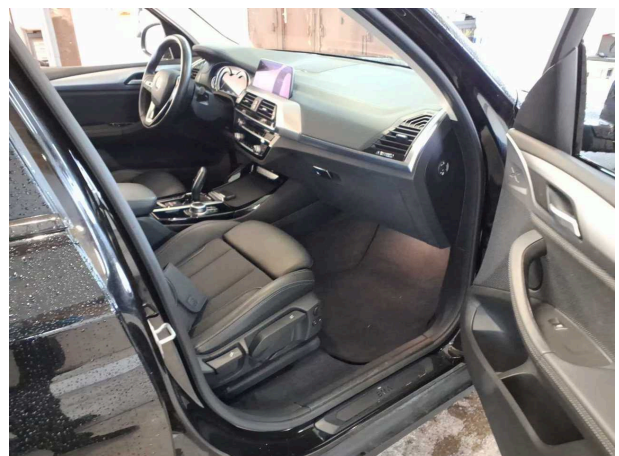
**Figure 3:** Diagonal rear



**Figure 4:** Diagonal rear



**Figure 5:** Interior



**Figure 6:** Interior





Figure 7: Interior



Figure 8: Interior



Figure 9: Interior



Figure 10: Misc.



Figure 11: Misc.



Figure 12: Misc.



Figure 13: Misc.



Figure 14: Misc.

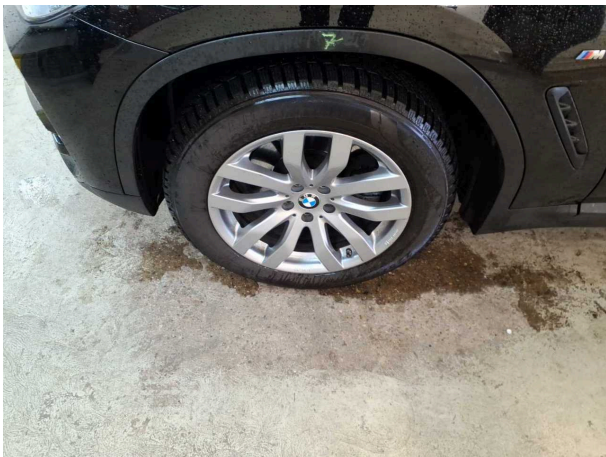


Figure 15: Misc.



Figure 16: Misc.



Figure 17: Misc.



Figure 18: Misc.



**TÜV SÜD Auto Plus GmbH**  
Gutenbergstr. 13  
70771 Leinfelden-Echterdingen

**Inspection location**  
Allane Mobility Consulting  
GmbH

69190 Walldorf

Inspection date: 12 Mar 2025  
**Protocol number: 38801337**  
Delivery date: 12 Mar 2025



**Figure 19:** Misc.



**Figure 20:** Misc.



**Figure 21:** Misc.

## Pictures of damage



**Damage #1:** Door - front right side: Door - Scratch(es) - Cover / polish



**Damage #1:** Door - front right side: Door - Scratch(es) - Cove...  
polish



**Damage #2:** Bonnet: Insulation lining - Damage caused by marte...  
rodent - Replace



**Damage #3:** Trim / covers: Door trim - rear right side -  
Scratched - Loss in value



**Damage #3:** Trim / covers: Door trim - rear right side - Scratched -  
Loss in value