

WBA5P510X0FK85216

Vehicle details

Operator		Inspection condition	conditional: light/moisture/dirt
License number		Mileage (Read)	79,115 km
Manufacturer	BMW	Next maintenance in	16,000 km
Type / Model	330e	Main inspection (Report on hand)	02/2026
Vehicle Identification number	WBA5P510X0FK85216	Power / Engine displacement	135 kW / 1,998 ccm
First registration	1 Feb 2021	Upholstery/Colour	/
Last maintenance	05/2024, 64,725 km	Paintwork	
Fuel type	Hybr.B/E ext. edition	Gearbox	Automatic

Zustandsbericht

Value reducing factors

No.	Component group	Description
1	Sill - left side	Sill - Scratch(es) - Smart repair
2	Side panel - rear right side	Sill - Scratched - Smart repair
3	Mudguard - left side	Mudguard - left side - Scratched - Repair and paint

Wear and tear

No.	Component group	Description
1	Interior	Interior - Abrasion - No deduction
2	Body	Body (Steinschläge) - Scratch(es) - No deduction
3	Vehicle glazing	Windscreen - Stone chips - No deduction

Missing parts

Missing part

Detected repainting

No.	Location
1	Mudguard - right side

Main tyres

Axle	Tyre size	Manufacturer	Type of tyre	Tread depth	Roadworthy	Permissibility
1	225/50 R17 98H	Pirelli	Winter tyres	5mm - 5mm	o.k.	
2	225/50 R17 98H	Pirelli	Winter tyres	4mm - 4mm	o.k.	

TÜV SÜD Auto Plus GmbH
Gutenbergstr. 13
70771 Leinfelden-Echterdingen

Inspection location
Allane Mobility Consulting
GmbH
69190 Walldorf

Inspection date: 14 Mar 2025
Protocol number: 38849599
Delivery date: 14 Mar 2025



Additional tyres

Axle	Tyre size	Manufacturer	Type of tyre	Tread depth	Roadworthy	Permissibility
1	225/50 R17 98Y	Hankook	Summer tyres	6mm - 6mm	o.k.	
2	225/50 R17 98Y	Hankook	Summer tyres	5mm - 5mm	o.k.	

The wear and tear condition and possible damages to the tyres are considered in the value.

Comments

Keine Gewähr auf Vollständigkeit und
Richtigkeit der angezeigten Ausstattung.
Techn. Änderungen vorbehalten
Das Fahrzeug weist dem Alter, der Laufleistung und dem
Einsatzzweck entsprechende Gebrauchsspuren auf.
elektr. Komponenten geprüft, i. O.

Lackwerte geprüft, n. i. O.

Fahrzeug war zum Zeitpunkt der Besichtigung verschmutzt, weitere Beschädigungen können nicht ausgeschlossen werden

TÜV SÜD Auto Plus GmbH
Gutenbergstr. 13
70771 Leinfelden-Echterdingen

Inspection location
Allane Mobility Consulting
GmbH
69190 Walldorf

Inspection date: 14 Mar 2025
Protocol number: 38849599
Delivery date: 14 Mar 2025



Vehicle details

Manufacturer	BMW	Inspection condition	conditional: light/moisture/dirt
Type / Model	330e	Mileage (Read)	79,115 km
Vehicle Identification number	WBA5P510X0FK85216	First registration	1 Feb 2021

Vehicle identification:

The vehicle identification number (VIN) was read and its conformity with the documents submitted was established during the inspection by the undersigned.

Inspection conditions:

A proper visual inspection of the paintwork and the bodywork was only possible to a limited extent due to insufficient lighting conditions/wetness or dirt. At the time of the inspection, the condition could not be ensured for an adequate assessment. The expert therefore recommends a further inspection to reduce the prognosis risk.

General condition:

The vehicle shows traces of wear and tear corresponding to its age and purpose

Overview pictures



Figure 1: Diagonal front



Figure 2: Diagonal front

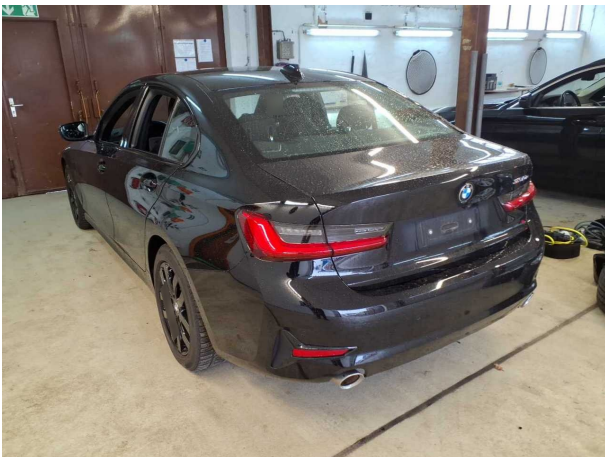


Figure 3: Diagonal rear



Figure 4: Diagonal rear



Figure 5: Interior



Figure 6: Interior



Figure 7: Interior



Figure 8: Interior



Figure 9: Interior



Figure 10: Misc.

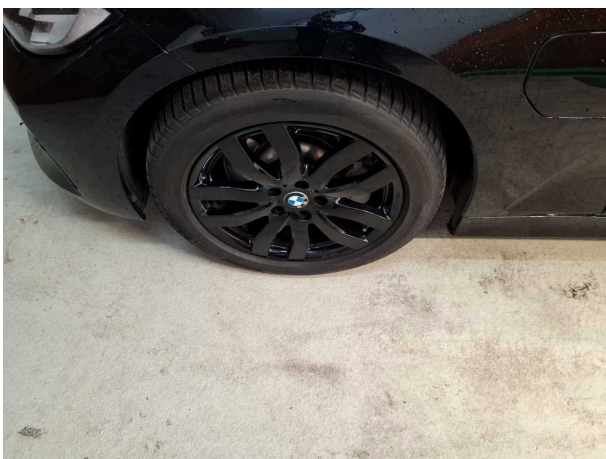


Figure 11: Misc.

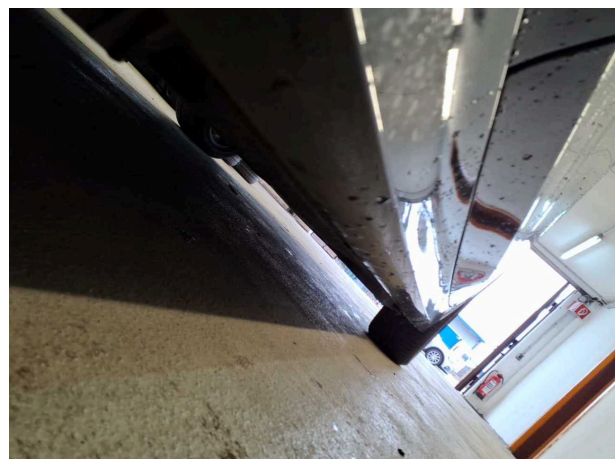


Figure 12: Misc.



Figure 13: Misc.



Figure 14: Misc.



Figure 15: Misc.

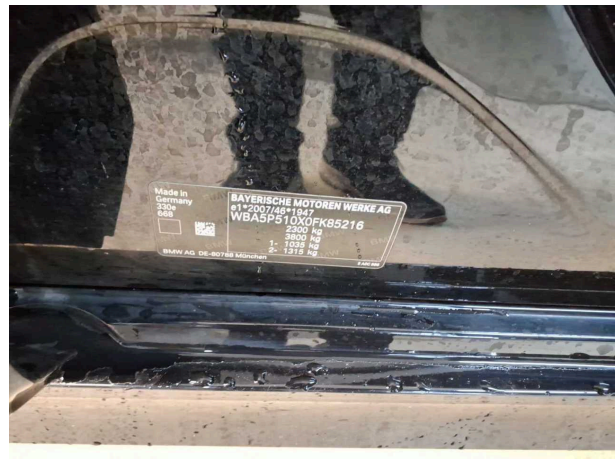


Figure 16: Misc.

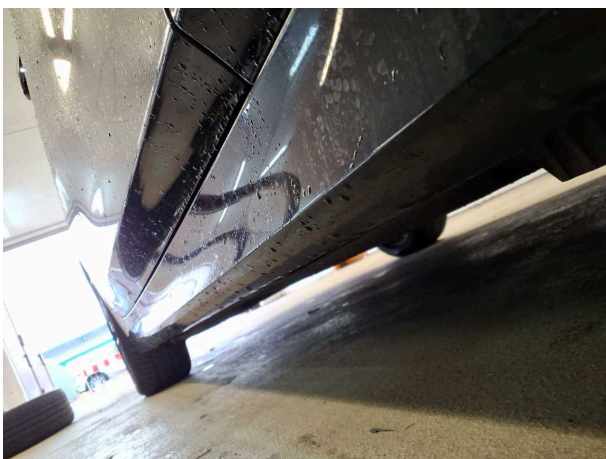


Figure 17: Misc.

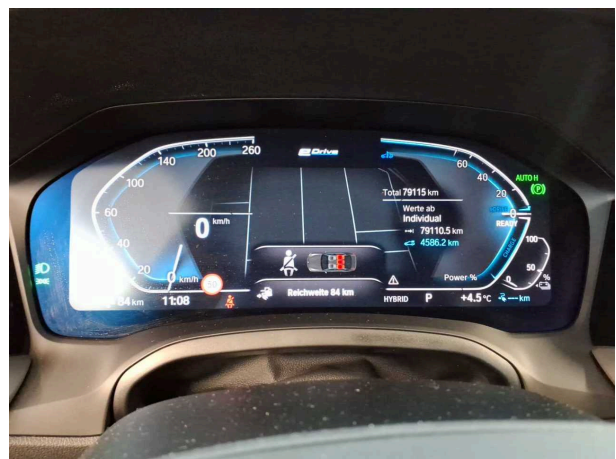


Figure 18: Misc.

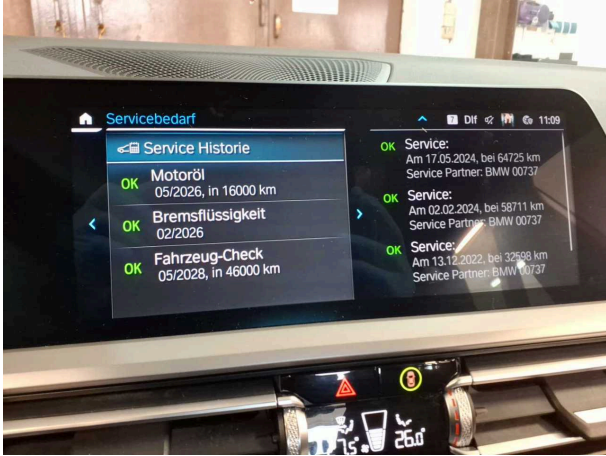


Figure 19: Misc.

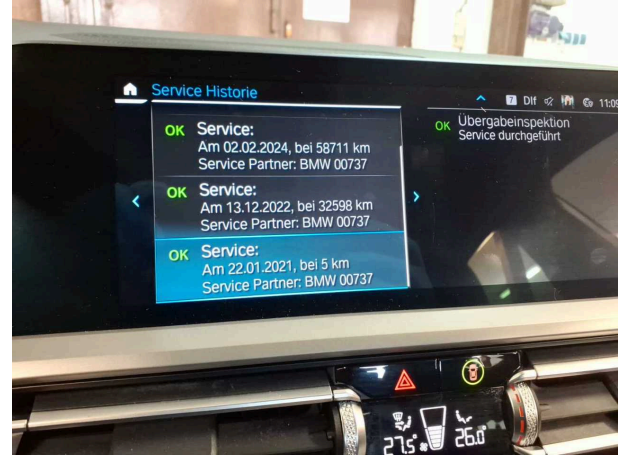


Figure 20: Misc.

Pictures of damage



Damage #1: Sill - left side: Sill - Scratch(es) - Smart repair



Damage #1: Sill - left side: Sill - Scratch(es) - Smart repair



Damage #2: Side panel - rear right side: Sill - Scratched - Smart repair



Damage #2: Side panel - rear right side: Sill - Scratched - Smart repair



Damage #3: Mudguard - left side: Mudguard - left side - Scratche...
Repair and paint



Damage #3: Mudguard - left side: Mudguard - left side -
Scratched - Repair and paint