



WBA71AB0105U50061

Vehicle details

Operator		Inspection condition	Sufficient
License number		Mileage (Read)	56,049 km
Manufacturer	BMW	Next maintenance in	5 Monat(e)
Type / Model	X1 xDrive25e Advantage Steptronic Sports Utility Vehicle5-türig 1499 ccm 220 PS / 162 KW Elektrisch 6-Gang Automatik	Main inspection	
Vehicle Identification number	WBA71AB0105U50061	Power / Engine displacement	/ 1,499 ccm
First registration	10 Dec 2021	Upholstery/Colour	Cloth / leather combination / Black-Brown
Last maintenance		Paintwork	Grey
Fuel type	Hybrid Petrol / E	Gearbox	Automatic

Zustandsbericht

Value reducing factors

No.	Component group	Description
1	Door - rear left side	Door - Scratched - Smart repair
2	Door - front left side	Door edge - Scratched - Smart repair
3	Vehicle glazing	Windscreen - Stone chips - Replace

Wear and tear

No.	Component group	Description
The vehicle shows traces of wear and tear corresponding to its age and purpose		

Missing parts

Missing part

Detected repainting

No.	Location
None detectable	

Main tyres

Axle	Tyre size	Manufacturer	Type of tyre	Tread depth	Roadworthy	Permissibility
1	225/55 R17 97H	Dunlop	Winter tyres	4mm - 4mm	o.k.	o.k.
2	225/55 R17 97H	Dunlop	Winter tyres	4mm - 4mm	o.k.	o.k.



Additional tyres

Axle	Tyre size	Manufacturer	Type of tyre	Tread depth	Roadworthy	Permissibility
1	225/50 R18 99W	Bridgestone	Summer tyres	4mm - 4mm	o.k.	o.k.
2	225/50 R18 99W	Bridgestone	Summer tyres	5mm - 5mm	o.k.	o.k.

The wear and tear condition and possible damages to the tyres are considered in the value.

Equipment

Equipment

Description
Automatic air conditioning
Navigation unit with map view
Radio DAB

Comments

Keine Gewähr auf Vollständigkeit und Richtigkeit der angezeigten Ausstattung.
Techn. Änderungen vorbehalten.
Das Fahrzeug weist dem Alter, der Laufleistung und dem Einsatzzweck entsprechende Gebrauchsspuren auf.

elektr. Komponenten geprüft, i. O.

Lackwerte geprüft, i. O.



Vehicle details

Manufacturer	BMW	Inspection condition	Sufficient
Type / Model	X1 xDrive25e Advantage Steptronic Sports Utility Vehicle5-türig 1499 ccm 220 PS / 162 KW Elektrisch 6-Gang Automatik	Mileage (Read)	56,049 km
Vehicle Identification number	WBA71AB0105U50061	First registration	10 Dec 2021

Vehicle identification:

The vehicle identification number (VIN) was read and its conformity with the documents submitted was established during the inspection by the undersigned.

Inspection conditions:

The inspection conditions were sufficient to assess the vehicle. The inspection was carried out using the lighting conditions provided by the photo system included in the report.

General condition:

The vehicle shows traces of wear and tear corresponding to its age and purpose

Overview pictures



Figure 1: Diagonal front



Figure 2: Diagonal front



Figure 3: Diagonal rear



Figure 4: Diagonal rear



Figure 5: Interior

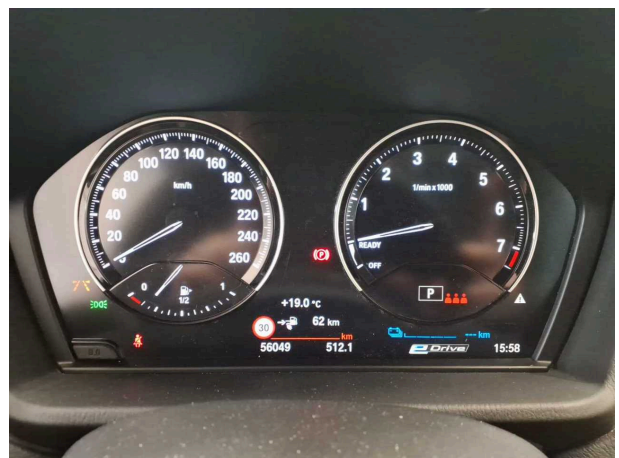


Figure 6: Interior



Figure 7: Interior



Figure 8: Interior



Figure 9: Interior



Figure 10: Interior



Figure 11: Interior



Figure 12: Interior



Figure 13: Interior

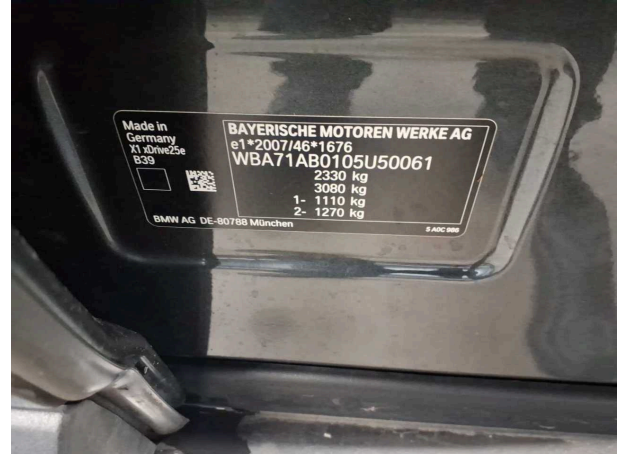


Figure 14: VIN



Figure 15: Accessories



Figure 16: Accessories



Figure 17: Accessories

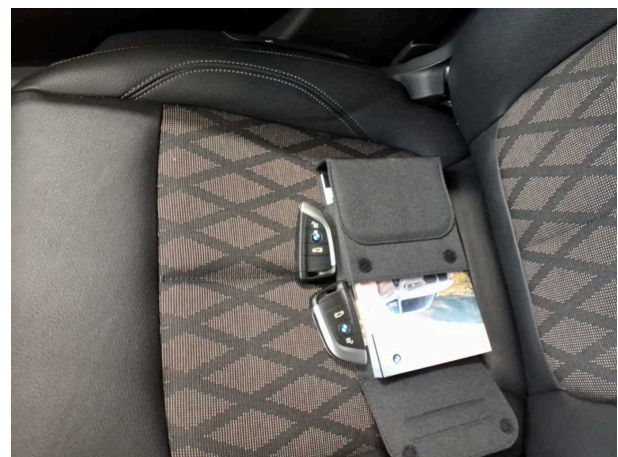


Figure 18: Documents



Figure 19: Mounted tyres



Figure 20: Misc.



Figure 21: Misc.

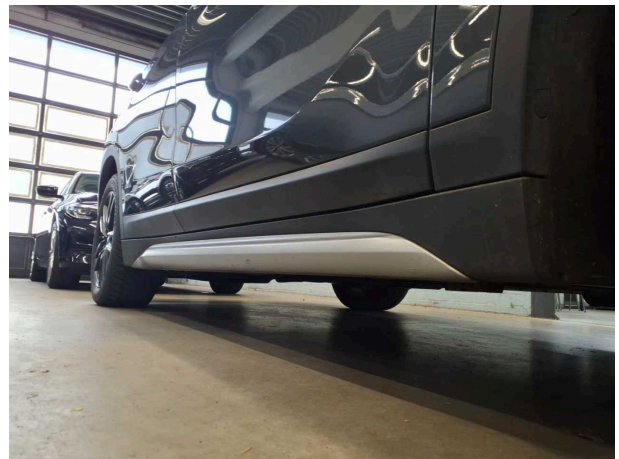


Figure 22: Misc.



Figure 23: Misc.

Pictures of damage



Damage #1: Door - rear left side: Door - Scratched - Smart repair



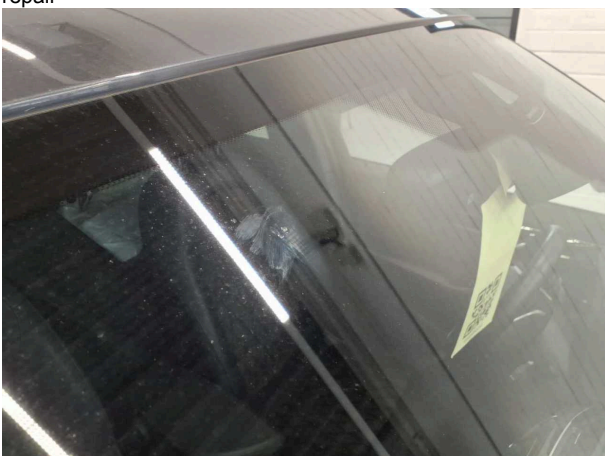
Damage #1: Door - rear left side: Door - Scratched - Smart repair



Damage #2: Door - front left side: Door edge - Scratched - Smart repair



Damage #3: Vehicle glazing: Windscreen - Stone chips - Replace



Damage #3: Vehicle glazing: Windscreen - Stone chips - Replace