

WBA5P51080FK85201

Vehicle details

Operator		Inspection condition	Sufficient
License number		Mileage (Read)	108,634 km
Manufacturer	BMW	Next maintenance in	28,000 km
Type / Model	330e	Main inspection (Report on hand)	02/2026
Vehicle Identification number	WBA5P51080FK85201	Power / Engine displacement	135 kW / 1,998 ccm
First registration	1 Feb 2021	Upholstery/Colour	/
Last maintenance	01/2025, 102,973 km	Paintwork	
Fuel type	Hybr.B/E ext. edition	Gearbox	Automatic

Zustandsbericht

Value reducing factors

No.	Component group	Description
1	Vehicle glazing	Windscreen (Rissbildung) - Stone chips - Replace
2	Door - rear right side	Door - Scratched - Paint
3	Front bumper	Front bumper - Scratched - Repair and paint
4	Door - front right side	Door - Scratched - Paint

Wear and tear

No.	Component group	Description
1	Body	Body (Steinschläge) - Scratch(es) - No deduction
2	Interior	Interior - Abrasion - No deduction

Missing parts

Missing part

Detected repainting

No.	Location
	None detectable

Main tyres

Axle	Tyre size	Manufacturer	Type of tyre	Tread depth	Roadworthy	Permissibility
1	225/45 R18 95V	Pirelli	Winter tyres	8mm - 8mm	o.k.	
2	225/45 R18 95V	Pirelli	Winter tyres	5mm - 5mm	o.k.	

TÜV SÜD Auto Plus GmbH
Gutenbergstr. 13
70771 Leinfelden-Echterdingen

Inspection location
Allane Mobility Consulting
GmbH

69190 Walldorf

Inspection date: 21 Mar 2025

Protocol number: 38968990

Delivery date: 21 Mar 2025



Auto Plus

Additional tyres

Axle	Tyre size	Manufacturer	Type of tyre	Tread depth	Roadworthy	Permissibility
1	225/45 R18 95Y	Bridgestone	Summer tyres	4mm - 4mm	o.k.	
2	255/40 R18 99Y	Bridgestone	Summer tyres	4mm - 4mm	o.k.	

Replacement

Type	Tyre size	Manufacturer	Type of tyre	Tread depth	Expiration date
Tirefit					07/2026

The wear and tear condition and possible damages to the tyres are considered in the value.

Comments

Keine Gewähr auf Vollständigkeit und

Richtigkeit der angezeigten Ausstattung.

Techn. Änderungen vorbehalten

Das Fahrzeug weist dem Alter, der Laufleistung und dem
Einsatzzweck entsprechende Gebrauchsspuren auf.

elektr. Komponenten geprüft, i. O.

Lackwerte geprüft, i. O.

TÜV SÜD Auto Plus GmbH
Gutenbergstr. 13
70771 Leinfelden-Echterdingen

Inspection location
Allane Mobility Consulting
GmbH
69190 Walldorf

Inspection date: 21 Mar 2025
Protocol number: 38968990
Delivery date: 21 Mar 2025



Vehicle details

Manufacturer	BMW	Inspection condition	Sufficient
Type / Model	330e	Mileage (Read)	108,634 km
Vehicle Identification number	WBA5P51080FK85201	First registration	1 Feb 2021

Vehicle identification:

The vehicle identification number (VIN) was read and its conformity with the documents submitted was established during the inspection by the undersigned.

Inspection conditions:

The inspection conditions were sufficient to assess the vehicle. The inspection was carried out using the lighting conditions provided by the photo system included in the report.

General condition:

The vehicle shows traces of wear and tear corresponding to its age and purpose

Overview pictures



Figure 1: Diagonal front



Figure 2: Diagonal front



Figure 3: Diagonal rear



Figure 4: Diagonal rear



Figure 5: Interior



Figure 6: Interior



Figure 7: Interior



Figure 8: Interior



Figure 9: Interior



Figure 10: Misc.



Figure 11: Misc.



Figure 12: Misc.



Figure 13: Misc.



Figure 14: Misc.



Figure 15: Misc.



Figure 16: Misc.

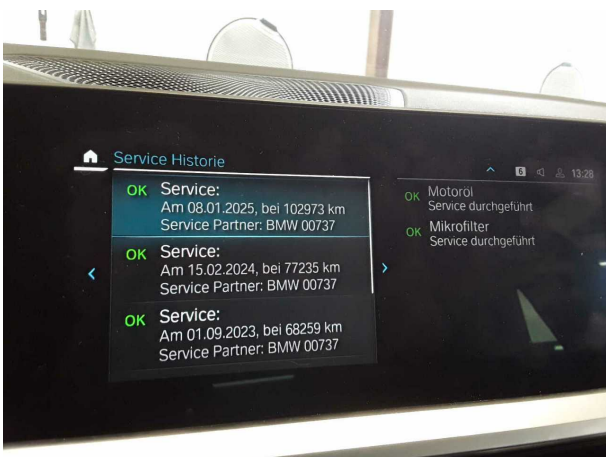


Figure 17: Misc.

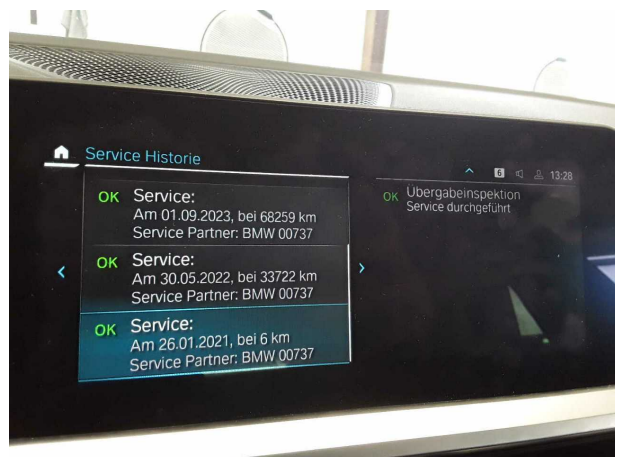


Figure 18: Misc.

TÜV SÜD Auto Plus GmbH
Gutenbergstr. 13
70771 Leinfelden-Echterdingen

Inspection location
Allane Mobility Consulting
GmbH

69190 Walldorf

Inspection date: 21 Mar 2025
Protocol number: 38968990
Delivery date: 21 Mar 2025

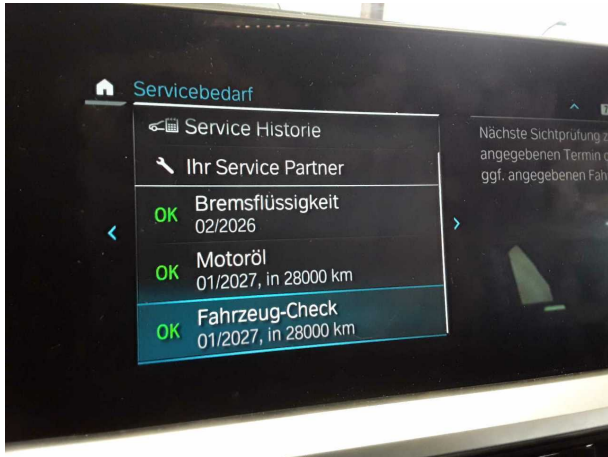


Figure 19: Misc.



Figure 20: Misc.



Figure 21: Misc.



Figure 22: Misc.

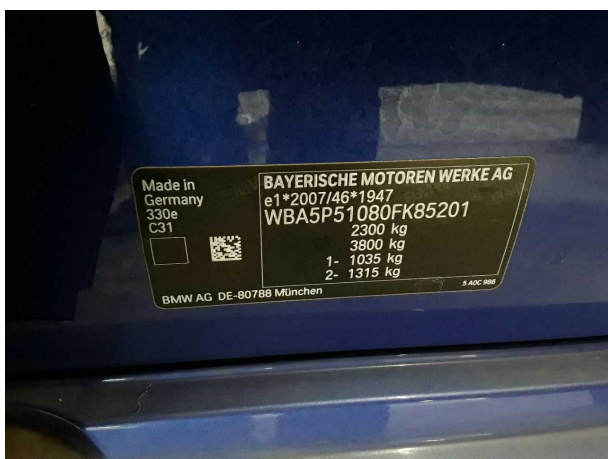


Figure 23: Misc.



Figure 24: Misc.

Pictures of damage



Damage #1: Vehicle glazing: Windscreen (Rissbildung) - Stone chips - Replace



Damage #1: Vehicle glazing: Windscreen (Rissbildung) - Stone chips - Replace



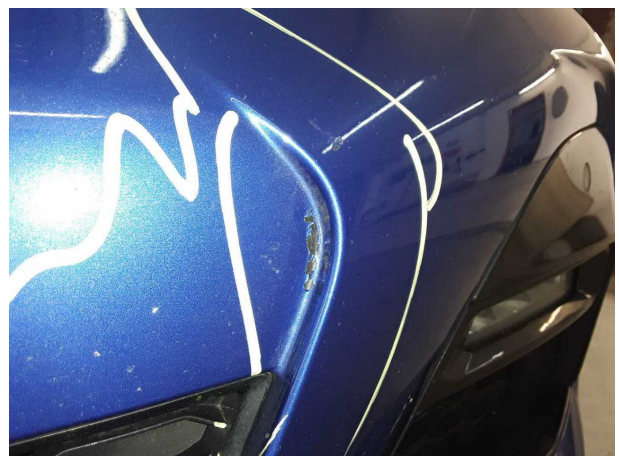
Damage #2: Door - rear right side: Door - Scratched - Paint



Damage #2: Door - rear right side: Door - Scratched - Paint



Damage #3: Front bumper: Front bumper - Scratched - Repair and paint



Damage #3: Front bumper: Front bumper - Scratched - Repair and paint

TÜV SÜD Auto Plus GmbH
Gutenbergstr. 13
70771 Leinfelden-Echterdingen

Inspection location
Allane Mobility Consulting
GmbH

69190 Walldorf

Inspection date: 21 Mar 2025
Protocol number: 38968990
Delivery date: 21 Mar 2025



Auto Plus



Damage #4: Door - front right side: Door - Scratched - Paint



Damage #4: Door - front right side: Door - Scratched - Paint