

WBA5P51080FK81603

Vehicle details

Operator		Inspection condition	Sufficient
License number		Mileage (Read)	52,736 km
Manufacturer	BMW	Next maintenance in	10 Monat(e)
Type / Model	3er-Reihe 330e Advantage Automatik Limousine4-türig 1998 ccm 292 PS / 215 KW Elektrisch 8-Gang Automatik	Main inspection	
Vehicle Identification number	WBA5P51080FK81603	Power / Engine displacement	/ 1,998 ccm
First registration	9 Feb 2021	Upholstery/Colour	Cloth / leather combination / Black
Last maintenance		Paintwork	Black
Fuel type	Hybrid Petrol / E	Gearbox	Automatic

Zustandsbericht

Wear and tear

No.	Component group	Description
		The vehicle shows traces of wear and tear corresponding to its age and purpose

Missing parts

Missing part

Detected repainting

No.	Location
	None detectable

Main tyres

Axle	Tyre size	Manufacturer	Type of tyre	Tread depth	Roadworthy	Permissibility
1	225/50 R17 98H	Dunlop	Winter tyres	7mm - 7mm	o.k.	o.k.
2	225/50 R17 98H	Dunlop	Winter tyres	8mm - 8mm	o.k.	o.k.

Additional tyres

Axle	Tyre size	Manufacturer	Type of tyre	Tread depth	Roadworthy	Permissibility
1	225/50 R17 98Y	Bridgestone	Summer tyres	4mm - 4mm	o.k.	o.k.
2	225/50 R17 98Y	Bridgestone	Summer tyres	5mm - 5mm	o.k.	o.k.

The wear and tear condition and possible damages to the tyres are considered in the value.

TÜV SÜD Auto Plus GmbH
Gutenbergstr. 13
70771 Leinfelden-Echterdingen

Inspection location
Autokontor Bayern GmbH
Windecker Straße 2
61137 Schöneck

Inspection date: 24 Mar 2025
Protocol number: 38991568



Equipment

Equipment

Description
Automatic air conditioning
Navigation unit with map view
Radio DAB

Comments

Keine Gewähr auf Vollständigkeit und Richtigkeit der angezeigten Ausstattung. Techn. Änderungen vorbehalten.
Das Fahrzeug weist dem Alter, der Laufleistung und dem Einsatzzweck entsprechende Gebrauchsspuren auf.

elektr. Komponenten geprüft, i. O.

Lackwerte geprüft, i. O.

TÜV SÜD Auto Plus GmbH
Gutenbergstr. 13
70771 Leinfelden-Echterdingen

Inspection location
Autokontor Bayern GmbH
Windecker Straße 2
61137 Schöneck

Inspection date: 24 Mar 2025
Protocol number: 38991568



Auto Plus

Vehicle details

Manufacturer	BMW	Inspection condition	Sufficient
Type / Model	3er-Reihe 330e Advantage Automatik Limousine4-türig 1998 ccm 292 PS / 215 KW Elektrisch 8-Gang Automatik	Mileage (Read)	52,736 km
Vehicle Identification number	WBA5P51080FK81603	First registration	9 Feb 2021

Vehicle identification:

The vehicle identification number (VIN) was read and its conformity with the documents submitted was established during the inspection by the undersigned.

Inspection conditions:

The inspection conditions were sufficient to assess the vehicle. The inspection was carried out using the lighting conditions provided by the photo system included in the report.

General condition:

The vehicle shows traces of wear and tear corresponding to its age and purpose

Overview pictures



Figure 1: Diagonal front



Figure 2: Diagonal front



Figure 3: Diagonal rear



Figure 4: Diagonal rear



Figure 5: Interior



Figure 6: Interior



Figure 7: Interior



Figure 8: Interior



Figure 9: Interior



Figure 10: Interior



Figure 11: Interior

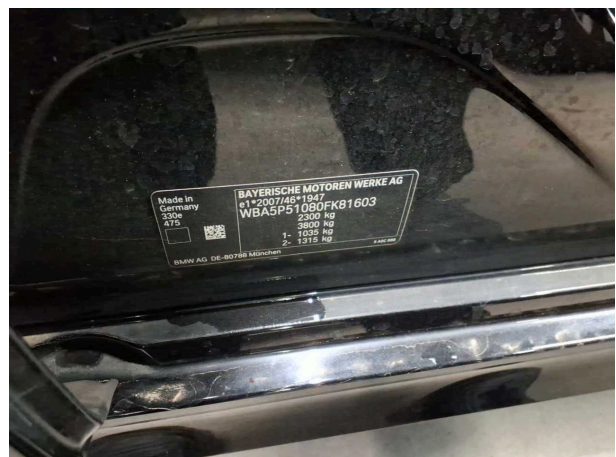


Figure 12: VIN



Figure 13: Accessories



Figure 14: Accessories

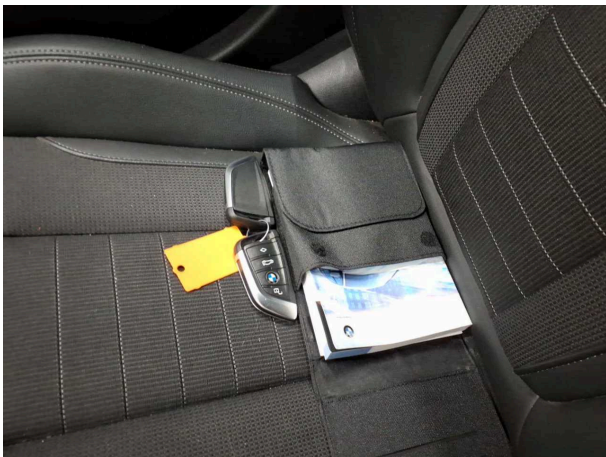


Figure 15: Documents



Figure 16: Mounted tyres

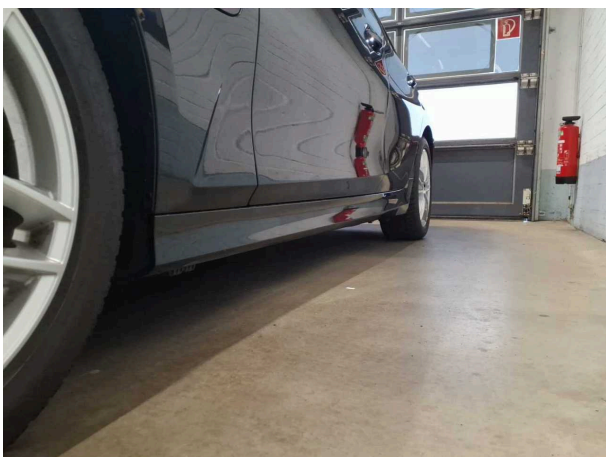


Figure 17: Misc.

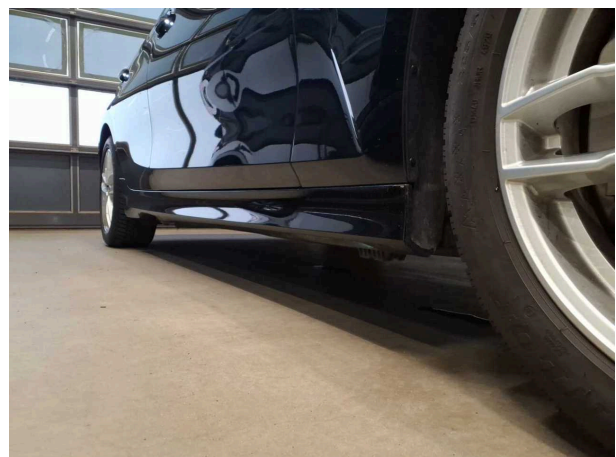


Figure 18: Misc.

TÜV SÜD Auto Plus GmbH
Gutenbergstr. 13
70771 Leinfelden-Echterdingen

Inspection location
Autokontor Bayern GmbH
Windecker Straße 2
61137 Schöneck

Inspection date: 24 Mar 2025
Protocol number: 38991568



Auto Plus



Figure 19: Misc.



Figure 20: Misc.