



**WBA6N31020FK94071**

## Vehicle details

<b>Operator</b>		<b>Inspection condition</b>	conditional: light/moisture/dirt
<b>License number</b>		<b>Mileage (Read)</b>	82,366 km
<b>Manufacturer</b>	BMW	<b>Next maintenance in</b>	16,000 km
<b>Type / Model</b>	330e	<b>Main inspection (Report not on hand)</b>	02/2026
<b>Vehicle Identification number</b>	WBA6N31020FK94071	<b>Power / Engine displacement</b>	135 kW / 1,998 ccm
<b>First registration</b>	11 Feb 2021	<b>Upholstery/Colour</b>	/
<b>Last maintenance</b>	02/2024, 64,988 km	<b>Paintwork</b>	
<b>Fuel type</b>	Hybr.B/E ext. edition	<b>Gearbox</b>	Automatic

## Zustandsbericht

### Value reducing factors

No.	Component group	Description
1	Documents	Log book (Fehlt bei Nutzer) - No deduction
2	Wheel / tyres	Tyre - front - Worn - No deduction
3	Side panel - rear right side	Side panel - Scratch(es) - Cover / polish
4	Screen cleaning	Wiper arm - rear (Abdeckung fehlt) - Replace
5	Door - rear right side	Door - Scratch(es) - Repair and paint
6	Front bumper	Front bumper - Scratched - Repair and paint
7	Rear bumper	Rear bumper - Deformed - Replace

### Wear and tear

No.	Component group	Description
1	Vehicle glazing	Windscreen - Stone chips - No deduction
2	Interior	Interior - Abrasion - No deduction
3	Body	Body - Scratch(es) - No deduction

### Missing parts

Missing part

### Detected repainting

No.	Location
None detectable	



## Main tyres

Axle	Tyre size	Manufacturer	Type of tyre	Tread depth	Roadworthy	Permissibility
1	225/50 R17 98H	Dunlop	Winter tyres	4mm - 4mm	Not o.k.	
2	225/50 R17 98H	Goodyear	Winter tyres	7mm - 7mm	o.k.	

## Additional tyres

Axle	Tyre size	Manufacturer	Type of tyre	Tread depth	Roadworthy	Permissibility
1	225/50 R17 98Y	Bridgestone	Summer tyres	5mm - 5mm	o.k.	
2	225/50 R17 98Y	Bridgestone	Summer tyres	5mm - 5mm	o.k.	

The wear and tear condition and possible damages to the tyres are considered in the value.

## Comments

Keine Gewähr auf Vollständigkeit und  
Richtigkeit der angezeigten Ausstattung.  
Techn. Änderungen vorbehalten  
Das Fahrzeug weist dem Alter, der Laufleistung und dem  
Einsatzzweck entsprechende Gebrauchsspuren auf.  
elektr. Komponenten geprüft, i. O.

Lackwerte geprüft, i. O.

Fahrzeug war zum Zeitpunkt der Besichtigung regennass, weitere Beschädigungen können nicht ausgeschlossen werden.

**TÜV SÜD Auto Plus GmbH**  
Gutenbergstr. 13  
70771 Leinfelden-Echterdingen

**Inspection location**  
SAP Walldorf  
69190 Walldorf

Inspection date: 26 Feb 2025  
**Protocol number: 38602890**  
Delivery date: 26 Feb 2025



Auto Plus

---

## Vehicle details

<b>Manufacturer</b>	BMW	<b>Inspection condition</b>	conditional: light/moisture/dirt
<b>Type / Model</b>	330e	<b>Mileage (Read)</b>	82,366 km
<b>Vehicle Identification number</b>	WBA6N31020FK94071	<b>First registration</b>	11 Feb 2021

**Vehicle identification:**

The vehicle identification number (VIN) was read and its conformity with the documents submitted was established during the inspection by the undersigned.

**Inspection conditions:**

A proper visual inspection of the paintwork and the bodywork was only possible to a limited extent due to insufficient lighting conditions/wetness or dirt. At the time of the inspection, the condition could not be ensured for an adequate assessment. The expert therefore recommends a further inspection to reduce the prognosis risk.

**General condition:**

The vehicle shows traces of wear and tear corresponding to its age and purpose

## Overview pictures



Figure 1: Diagonal front



Figure 2: Diagonal front



Figure 3: Diagonal rear



Figure 4: Diagonal rear

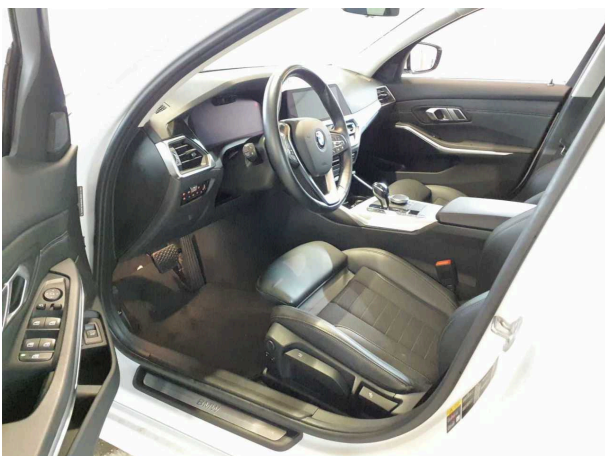


Figure 5: Interior

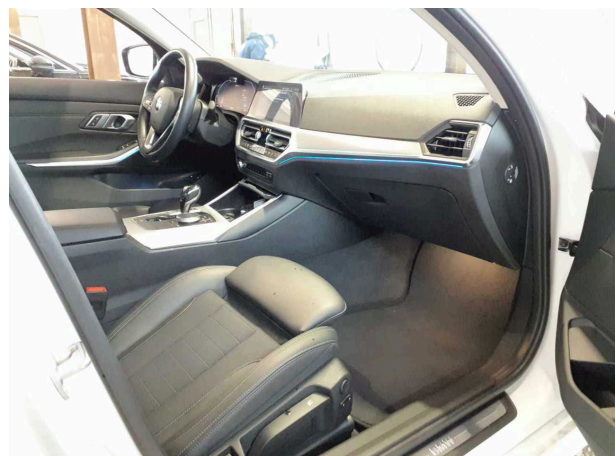


Figure 6: Interior



Figure 7: Interior



Figure 8: Interior



Figure 9: Interior



Figure 10: Misc.



Figure 11: Misc.

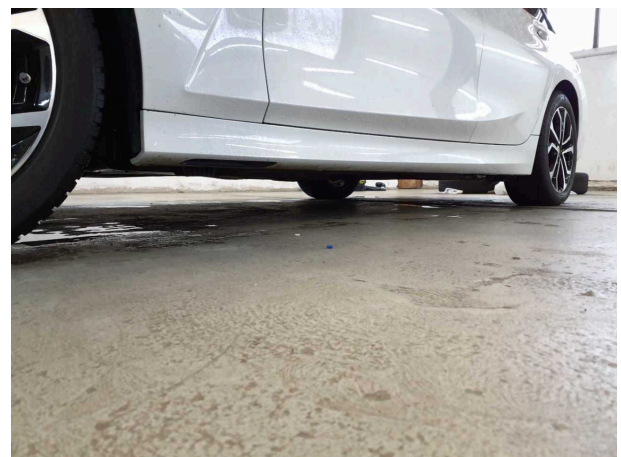


Figure 12: Misc.



Figure 13: Misc.



Figure 14: Misc.



Figure 15: Misc.



Figure 16: Misc.



Figure 17: Misc.

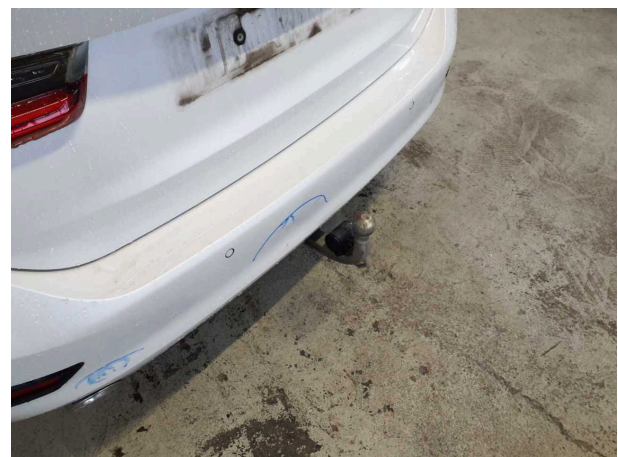


Figure 18: Misc.



Figure 19: Misc.

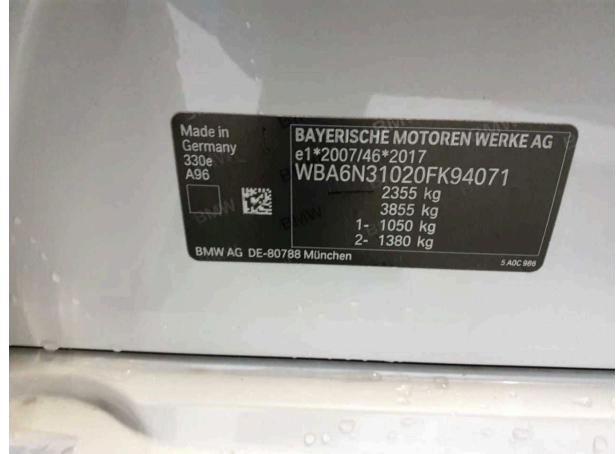


Figure 20: Misc.



Figure 21: Misc.



Figure 22: Misc.



Figure 23: Misc.

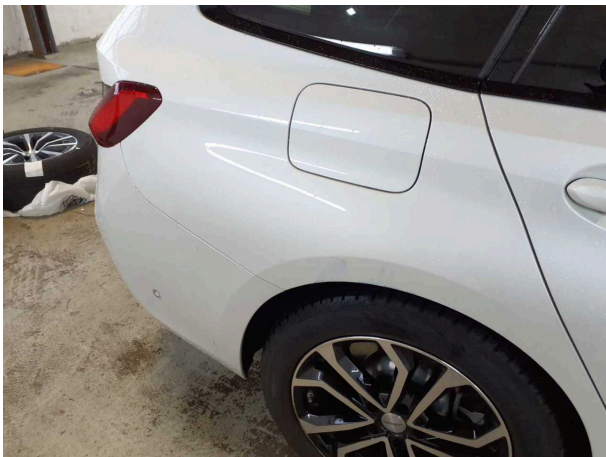
## Pictures of damage



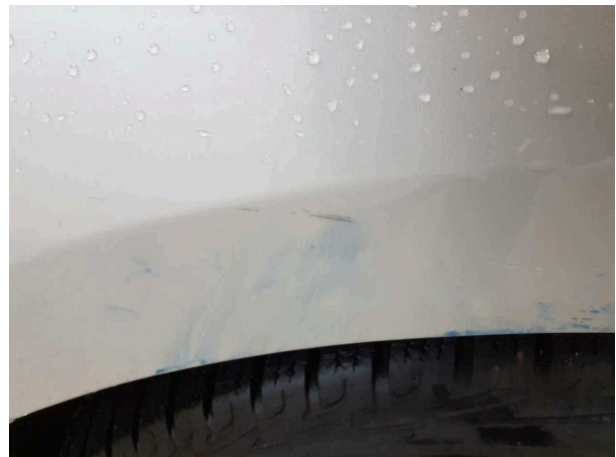
**Damage #2:** Wheel / tyres: Tyre - front - Worn - No deduction



**Damage #2:** Wheel / tyres: Tyre - front - Worn - No deduction



**Damage #3:** Side panel - rear right side: Side panel - Scratch(es) - Cover / polish



**Damage #3:** Side panel - rear right side: Side panel - Scratch(es) - Cover / polish



**Damage #4:** Screen cleaning: Wiper arm - rear (Abdeckung fehlt) - Replace



**Damage #4:** Screen cleaning: Wiper arm - rear (Abdeckung fehlt) - Replace





**Damage #5:** Door - rear right side: Door - Scratch(es) - Repair and paint



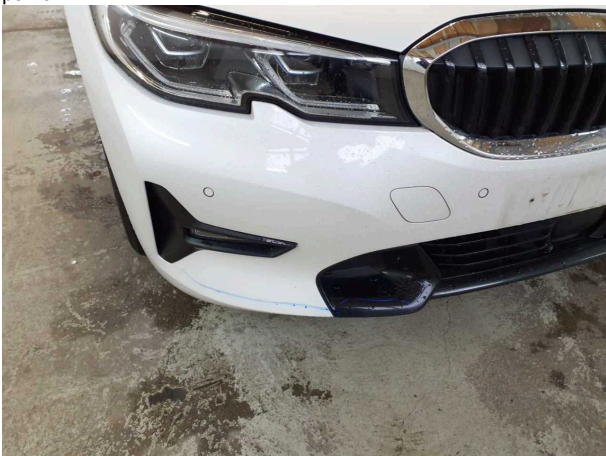
**Damage #5:** Door - rear right side: Door - Scratch(es) - Repair and paint



**Damage #6:** Front bumper: Front bumper - Scratched - Repair and paint



**Damage #6:** Front bumper: Front bumper - Scratched - Repair and paint



**Damage #6:** Front bumper: Front bumper - Scratched - Repair and paint



**Damage #6:** Front bumper: Front bumper - Scratched - Repair and paint



Damage #7: Rear bumper: Rear bumper - Deformed - Replace



Damage #7: Rear bumper: Rear bumper - Deformed - Replace



Damage #7: Rear bumper: Rear bumper - Deformed - Replace



Damage #7: Rear bumper: Rear bumper - Deformed - Replace



Damage #7: Rear bumper: Rear bumper - Deformed - Replace